



UPPSALA
UNIVERSITET

Annual report on research

CKF-Region Gävleborg 2015

Submitted/ Approved by Katarina Wijk 2016-04-19

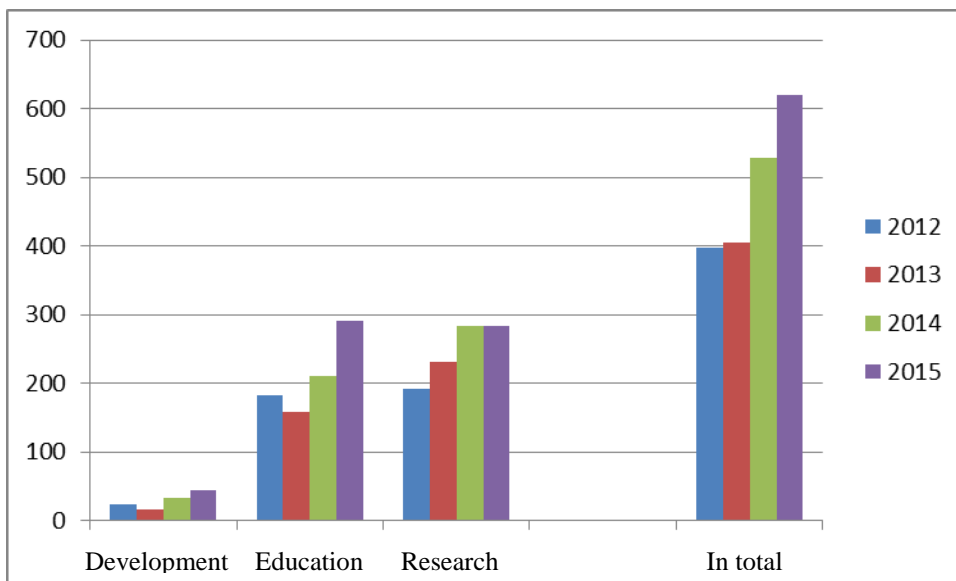
Introduction (including Courses)

The annual report on research in the Region Gävleborg provides an overview of our research activities in 2015. In order to get a region that develops a health care that is based on science, evidence and proven experience, we work for evidence and systematic knowledge. Research and development is therefore a natural element and it contributes to knowledge and development. Region Gävleborg provides the opportunity for a selection of employees to carry on research as part of their employment or manage doctoral studies PhD-students

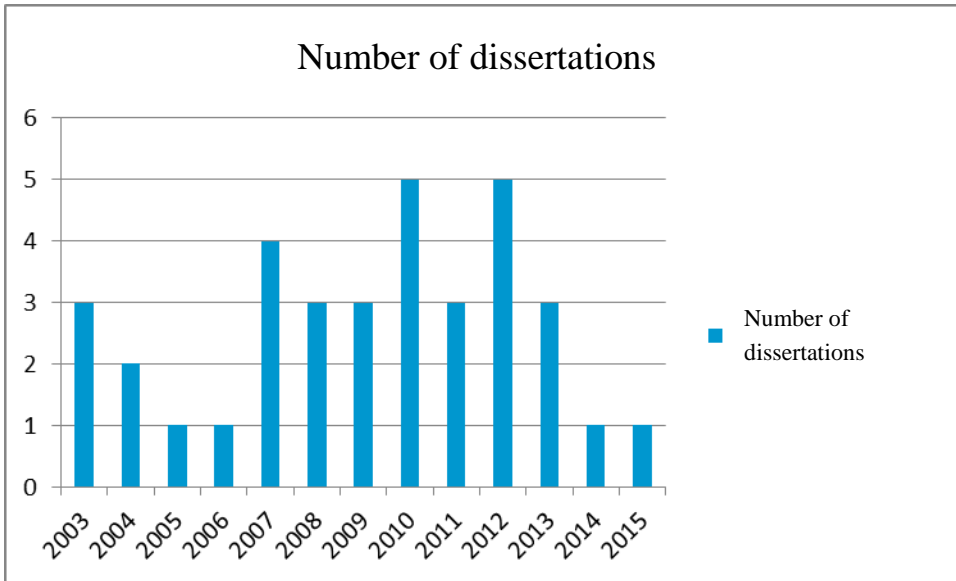
Activity events during 2015

Scientific guidance and advice (counseling)

The accumulated activities in projects efforts with supervision 2015 is a total of 620. Project efforts are distributed in Development 7%, Education 47% and Research 46%. Education has increased significantly and is partly due to increased number of Resident physicians.



Supervisory contributions for the years 2012 - 2015. A sharp increase in educational contributions can be seen.



Number of employees with PhDs in the years 2003-2015

Resources

Besides supervision, counseling and teaching we offer an environment that enables individual employees research time (as part of their employment) access to an attractive work place with computers with appropriate programs for research and development. The goal is to offer a creative environment as well access to rapid assistance for employees who have dedicated time for research, education and/or developmental projects.

An overview on research in Region Gävleborg during 2015.

During the year, there were 33 active researchers and 35 PhD students in Region Gävleborg. Among researchers and PhD students, the majority were men and physicians.

Below please find a more detailed overview of statistics and research activity.. Only active researchers in Region Gävleborg are counted. The articles are adjusted to one author per division and the sum of the articles are adjusted to one author in the Region Gävleborg.

Division	Operation	Diagnostic	Medicine / Psychiatry	Primary care	Public dental care	Other**	Sum
Researchers	11	0	8	3	5	6	33
- Men/women	8/3	0/0	5/3	1/2	4/1	3/3	21/12
- Physician	11	0	5	3	0	0	19
- Nurse	0	0	0	0	0	1	1
- Other	0	0	3	0	5	5	13
PhD students	13	5	10	3	2	2	35
- Men/women	10/3	3/2	5/5	0/3	1/1	0/2	19/16
- Physician	11	3	5	0	0	0	19
- Nurse	2	0	0	1	0	1	4
- Other	0	2	4	2	2	2	12
TOther	1	0	0	0	0	0	1
External accounts thousand Swe kr	1559	5	860	2960	65	0	5449
Scientific production							
- Articles	19	4	25	16	4	15	83
- Bookchapters	1	0	2	0	1	0	4
- Dissertation	0	0	1	0	0	0	1
- Conferences	15	2	24	15	6	10	70
- Citations	35	1	742	1611	7	27	2440
Drug trials*	18	0	5	0	0	1	24
Medical technical trial*	4	2					6
Committee for national quality registry.*	1						1

*Known reported

**Others, CFUG, Health Care Management, LOV

Courses

Course in Research Methodology

The course "Basic Research Methodology- Part 1" was given during the year. The course was offered as a commissioned program by the University of Uppsala and comprised of 3.5 credits. During the course the students performed their project ideas with the support of research supervisors and after data collection and analysis it resulted in an individual written work as required by the Social Board. A small number of course participants also choose to proceed with the course "Basic research Methodology - Part 2" including independent literature studies and a final written exam. This is a broader part of the course that includes 4 credits.

Course evaluations showed that the students to a large extent were satisfied with the course.

Course for Scientific supervisors for Resident physicians within the Goal Part 19

CFUG also offered , a supervisor course for medical specialists which supervise or wish to supervise Resident physician within the Goal Part 19. The course was planned, as in previous years, with Department of Quality and University Education, University of Educational Development, Uppsala University and the Study principal organization for physicians in Region Gävleborg.

PhD student meetings

In 2015 eight PhD student meetings were held at CFUG with about 10-15 participants per meeting.

Friday, 20/02 at 1:00 p.m. to 3:00 p.m. Standard statistical issues at the dissertation, Per Liv

Friday, 27/03 at 1:00 p.m. to 3:00 p.m. Written presentation - to write scientific texts, Maria Wennerström Wohrne, Uppsala University.

Friday, 4/24 at 1:00 p.m. to 3:00 p.m. Health Economics, Professor Anders Wimo

Friday 22/5 at 1:00 p.m. to 3:00 p.m. Publication Ethics - a cultural issue? Associate Professor Stefan Eriksson from the Centre for Research & Bioethics (CRB) in Uppsala.

Friday, 09/25, at 1:00 p.m. to 3:00 p.m How to use EndNote effectively, SigmaPlot, Per Fessé and consultant Andreas Palm.

Friday, 23/10, at 1:00 p.m. to 3:00 p.m Half-time control, Kristina Vroland Nordstrand

Friday, 27/11, at 1:00 p.m. to 3:00 p.m Mixed methods designs, Research supervisor Ulrika Östlund.

Friday, 18/12, at 1:00 p.m. to 3:00 p.m Query to research databases, literature, articles, coverage of searches and so on. Emma-Lotta Säätelä, University Librarian at BMC, Uppsala Unviersitya.

Information distribution

Several occasions for spreading information on reserachs have been made in 2015, for example at the Regional Council, Regional Executive and political committes. A new magazinewhich describes and focus on research in Region Gävleborg have also been published and distributed in Region Gävleborg., at the Group management and the management teams.

In 2015 CFUG published electronic newsletters with business events and research related information at CFUG's external website: <http://www.regiongavleborg.se/A-O/cfug/Nyhetsbrev/>

Research and development council

During the year we have established a committee for research that promotes Regional development. In the Research and Development Council there are representatives from the Region Gävleborg, the University of Gävle and the Centre for Flexible Learning..

The Research and Development Council, that promotes regional development, had following members during the year:

Chairman, Associate Professor Katarina Wijk,

PhD Annika Almkvist Region Gävleborg.

Professor Sam Larsson, the University of Gävle

Associate Professor Maria Vallström, the Centre for Flexible Learning.

Research and Development Council for Health- and Medical Care.

In addition, there is already a Research and Development Council for Health- and Medical Care.

The Research and Development Council, had following members during the year:

Chairman, Associate Professor Katarina Wijk.

Professor Per Hellman, University of Uppsala.

Professor Osten Ljunggren, University of Uppsala.

Professor Johan Hallqvist, University of Uppsala.

Professor Anders Wimo, Region Gävleborg.

Associate professor Mats Hallman, Region Gävleborg.

Associate professor Stefan Bergström, Region Gävleborg.

PhD Tomas Weitoft Region Gävleborg.

PhD Kristina Vroland.

Deputy superintendent, Associate Professor Mia Wadelius.

Regional Research Council (RFR)

Representative of our Region in the Regional Research Council in Uppsala-Örebro region (RFR) was Svante Lönnbark, Regional Director. The Region Research Council's prioritization committee included from Region Gävleborg consultant dentist and odont. dr. Arne Mordenfeld, research supervisor and PhD Dag Rissen, consultant and PhD Khatereh Djavani Gidlund. Chairman for Prioritization Committee was Associate Professor Katarina Wijk.

Since 2013 the administration of RFR is placed at the Gävleborg County Council. The office is located at CFUG. Administrator is Annette Östling. Head of the Center for Research and Development is Katarina Wijk. Chairman for RFR Board is Rickard Simonsson, Regional Director in Örebro.

List of Contents

Innehåll

List of Contents	1
Organization	3
Organization map	3
Employees at the Center for Research and Development	4
Researchers	Fel! Bokmärket är inte definierat.
Administrators	4
Scientific Reports 2015	5
Diagnostic and Operation Division	5
Researchers at the Operation Division	5
PhD Students at the Operation Division	11
Diagnostic division	14
PhD Students	14
Division Primary Care	15
Researchers	15
PhD Students	17
Division Medicine- Psychiatry	19
Researchers	19
Dissertation	23
PhD Students	23
Management and Operational Support – LOV	26
Researcher	26
PhD Students	27
Center for Research and Development Gävleborg - CFUG	27
Researchers	27
National Dental Service, Gävleborg AB	30
Researchers	30
PhD Students	32
Scientific Reports 2014	33
Diagnostic division	33
PhD Students	33
Division medical Psychiatry	34
Researchers	34
PhD Students	37

Division operation	39
Researchers	39
PhD Students	44
Division Primary Care	46
Researchers	46
PhD Students	48
Management and Operational Support – LOV	49
PhD Students	49
Dissertation	49
CFUG and Executive Office	49
Researchers	49
Community Medicine	51
Researcher	51
Specialist Dental Care, Gävle	51
Researchers	51
PhD Students	53
Centres and Facilities	54
Agreement with the University of Uppsala	54
Research and development council	54
Research and Development Council for Health & Medical Care.	54
Regional Research Council (RFR)	55
Awards and Appointments 2015	Fel! Bokmärket är inte definierat.
Camilla Sandberg Melin	Fel! Bokmärket är inte definierat.
Eva Brandén	Fel! Bokmärket är inte definierat.

Organization

Organization map

Region Gävleborg has a county-comprehensive research and development management since 1991, titled FoU-forum. In 2001 Uppsala University placed CKF - Gävleborg to the county council and this is called the Center for Research and Development, Uppsala University -Region Gävleborg (CFUG).

CFUG had its positioning as an independent management, directly reporting to the Regional Board and the Regional Director (Figure 1) during 2015.

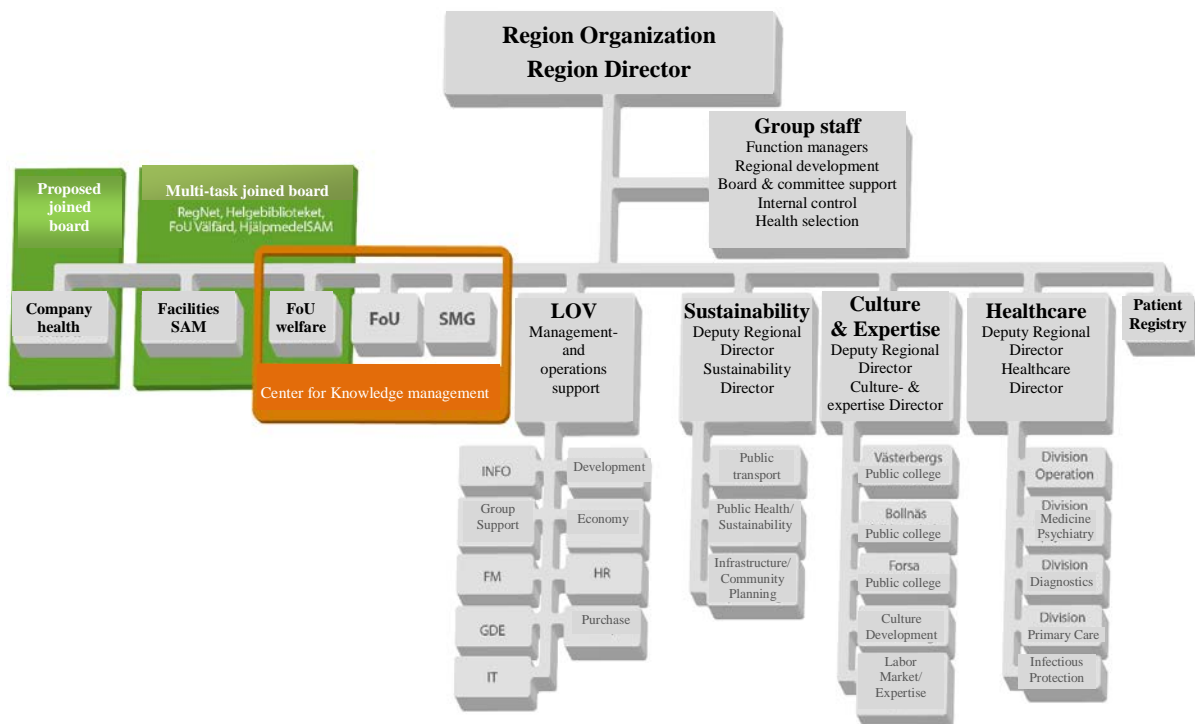


Figure 1 Centre for Development and Research, Uppsala University a / Region Gävleborg (CFUG), organizational sketch.

Employees at the Center for Research and Development

The number of employees during 2015 was 7.7. One employee was partially parental leave and was during that time replaced by a substitute.

HeadKatarina Wijk, Head of the Center for Research and Development, Head of the Department of Community Medicine, assistant professor

Research supervisors

Dag Rissén, research supervisor

Per Liv, statistician

Khatereh Djavani Gidlund, research supervisor, consultant

Kristina Bröms, research supervisor, family doctor

Lennart Fredriksson, research supervisor

Michael Bergqvist, research supervisor, consultant

Thomas Weitoft, research supervisor, consultant

Ulrika Östlund, research supervisor

Administrators

Annette Östling, administrator RFR

Maria Lindh, researchadministrator

Inga-Lill Stenlund,

Scientific Reports 2015

This section is divided by Division, further divided by Researchers, PhD Students or Dissertations and finally divided by Work area and employee including Research area, Publications (scientific articles), Dissertations and if Agencies have been supporting the work during 2015.

Diagnostic and Operation Division

Researchers at the Operation Division

Surgery

Khaterreh Djavani Gidlund

Consultant

PhD in 2011 on “*Colonic ischemia and intra-abdominal hypertension after operation for abdominal aortic aneurysm*” at the University of Uppsala.

Research area: aortic Aneurysm

Scientific articles:

Gunnarsson K, Wanhainen A, Djavani Gidlund K, Björck M, Mani K. Endovascular Versus Open Repair as Primary Strategy for Ruptured Abdominal Aortic Aneurysm: A National Population-based Study. *Eur J Vasc Endovasc Surg.* 2015 Jul 31. pii: S1078-5884(15)00519-5. doi: 10.1016/j.ejvs.2015.07.001. [Epub ahead of print]

Participation in national and international conferences:

The presence of a. Iliaca communis aneurysms in patients with screening discovery dilated aorta Surgeon Week 2015 ESVs 2015. Mykotiska aortic aneurysm in Sweden 1994-2014 surgeon week in 2015, ESV 2015

Lars Karlsson

Consultant

PhD in 2009 on *The role of Chlamydomphila pneumoniae in the inflammatory response and expansion of abdominal aortic aneurysms* at the University of Uppsala.

Research area: aortic Aneurysm

Women's health

Bengt Andrae

Consultant

PhD on *Development and implementation of a model for Routine National Audit of Cervical Cancer Prevention* at the Karolinska Institute

Research area: Cervix cancer

Agencies that support work/Funding 2015:

SSF via KI 243766 kr

Participation in national and international conferences:

Member of NACx NKCx och VPCx

Hashem Amini

Consultant

PhD in 2010 on *Fetal Anomalies – Surveillance and Diagnostic Accuracy of Ultrasound and Magnetic Resonance Imaging* at the University of Uppsala.

Research area: Obstetrics and Gynecology

Peter Smith

Consultant

PhD in 1993 on *Estrogens and the urogenital tract : studies on steroid hormone receptors and a clinical study on a new estradiol-releasing vaginal ring* at the University of Uppsala.

Research area: Obstetrics and Gynecology

Participation in national and international conferences:

The study “A novel approach to relief of postoperative pain after abdominal hysterectomy: intraoperatively superior hypogastric plexus block” is completed. It was reported by me during the 11th Congress of the European Society of Gynecology in Prague October 2015.

Maria Palm

Consultant

PhD in 2012 on *Oxidative Stress, Angiogenesis and Inflammation in Normal Pregnancy and Postpartum* at the University of Uppsala.

Research area: Obstetrics and Gynecology

Oncology

Michael Bergqvist

Consultant, professor

PhD in 2002 on *Radiosensitivity in lung cancer with focus on p53* at the University of Uppsala.

Forskningsområde: Cancer

Scientific articles:

Holgersson G, Bergström S, Harmenberg J, Ringbom M, Klockare M, Jerling M, Ekman S, Lundström KL, Koyi H, Brandén E, Larsson O, Bergqvist M A phase I pilot study of the insulin-like growth factor 1 receptor pathway modulator AXL1717 in combination with gemcitabine HCl and carboplatin in previously untreated, locally advanced, or metastatic non-small cell lung cancer. *Med Oncol.* 2015 april, 32 (4): 129. doi: 10,1007 / s12032-015-0578-y. Epub 2015 21 mars

Asklund T, Malmström A, Bergqvist M, Björ O, Henriksson R Brain tumors in Sweden: data from a population-based registry 1999-2012. *Acta Oncol.* 2015 Mar; 54 (3): 377-84

Sooman LI, Freyhult E, Jaiswal A, Navani S, Edqvist PH, Pontén F, Tchougounova E, Smits A, Elsir T, Gullbo J, Lennartsson J, Bergqvist M, Ekman S. FGF2 as a potential prognostic biomarker for proneural glioma patients. *Acta Oncol.* 2015 Mar; 54 (3): 385-94

Sandelin M, Berglund A Sundström M, Micke P, Ekman S, Bergqvist M, Bergström S, Koyi H, Brandén E, Janson C7, Botling J. Patients with Non-small Cell Lung Cancer Analyzed for EGFR: Adherence to Guidelines, Prevalence and Outcome. *Anticancer Res.* 2015 juli; 35 (7): 3979-85

Holgersson G, Bergqvist M, Koyi H, Berglund A, Lambe M, Bergström S. Väntetider i lungcancervården - Patientlotsar GAV snabbare flöde. *Läkartidningen.* 2015 2 juni; 112

Stefan Bergström

Consultant, associate Professor

PhD in 1989 on *On mast-cell-mediated mitogenesis in rat mesenteric windows. Influence of long-standing streptozotín-diabetes and related features such as age and hyperplasia* at the University of Göteborg.

Research area: Cancer

Agencies that support the work/Funding 2015:

Stiftelsen Gävle cancerfond 379000 kr (together with prof. Michael Bergqvist)

Strålsäkerhetsmyndigheten 180000 kr

Scientific articles:

Walters S, Benitez-Majano S, Muller P, Coleman MP, Allemani C, Butler J, Peake M, Guren MG, Glimelius B, Bergström S, Pählman L, Rachet B. Is England closing the international gap in cancer survival? *Br J Cancer.* 2015 1 september, 113 (5): 848-60. doi: 10.1038 / bjc.2015.265. Epub 2015 4 augusti.

Holgersson G, Bergström S, Harmenberg J, Ringbom M, Klockare M, Jerling M, Ekman S, Lundström KL, Koyi H, Brandén E, Larsson O, Bergqvist M. A phase I pilot study of the insulin-like growth factor 1 receptor pathway modulator AXL1717 in combination with gemcitabine HCl and carboplatin in previously untreated, locally advanced, or metastatic non-small cell lung cancer. *Med Oncol.* 2015 april, 32 (4): 129. doi: 10.1007 / s12032-015-0578-y. Epub 2015 21 mars

Sandelin M, Berglund A Sundström M, Micke P, Ekman S, Bergqvist M, Bergström S, Koyi H, Brandén E, Janson C7, Botling J. Patients with Non-small Cell Lung Cancer Analyzed for EGFR: Adherence to Guidelines, Prevalence and Outcome. *Anticancer Res.* 2015 juli; 35 (7): 3979-85

Ekman S, Harmenberg J, Frödin JE, Bergström S, Wassberg C, Eksborg S, Larsson O, Axelson M, Jerling M, Abrahmsén L, Hedlund Å, Alvfors C, Ståhl B, Bergqvist M A novel oral insulin-like growth factor-1 receptor pathway modulator and its implications for patients with non-small cell lung carcinoma: A phase I clinical trial. *Acta Oncol.* 2015 10 juli: 1-9. [Epub ahead of print]

Holgersson G, Bergqvist M, Koyi H, Berglund A, Lambe M, Bergström S. Väntetider i lungcancervården - Patientlotsar GAV snabbare flöde. Läkartidningen. 2015 2 juni; 112. Onkologi i Sverige. 2014;6:46-51.

Participation in national and international conferences:

Participated in the development of standardized care processes. A member of the National lungcancer register steering committee.

Orthopedics

Gösta Ullmark

Consultant, associate Professor

PhD in 2001 on *Morcelised Impacted Cortico-Cancellous Bone Allografts in Revision Surgery for Endoprosthetic Loosening with Osteolysis* at the University of Uppsala.

Research area: Bone metabolism of hip

Agencies that support the work/Funding 2015:

Stiftelsen Skobranschens Utvecklingsfond 200000 kr

Reumatikerfonden 75000 kr

Waldemar Link GmbH Co. KG Study 158/14-F-PET/CT 152768 kr

Participation in national and international conferences:

16th EFORT Congress in Prague June 2015 (invited speaker).

Swedish Orthopaedic Association meeting Falun August 2015.

Advanced hip arthroplasty surgery Sept 16-18, Visby (invited speaker).

3:rd Congress of Orthopedics and Trauma Surgery in Kosovo, named "Prishtina Hip Congress", 24-26 September 2015 (invited speaker).

71:st Hellenic Association of Orthopaedic Surgery and Traumatology (HAOST) Congress, October 7th to 10th 2015 (invited speaker) .

Deutcher Kongress fur Ortopädie und Unfallchirurgie Berlin 20-13 Oktober 2015 (invited speaker).

The 67th International congress of The Egyptian Orthopaedic Association Dec 7-10 2015 (invited speaker).

Attended at American Association of Orthopedic Surgeon Congress 11-15 Mars in New Orleans.

Prosthesis Revision Course 2-4 April Skåvsjöholm: Lecturer (teacher)

Invited lecturer on hip replacement revision at Landshut Hospital (Germany)

Invited lecturer to The Latvian Hip and Knee Joint Replacement Society kongress 30/5, Riga, Latvia

Attended at International Hip Symposium. Rome 17th-20th of September 2014

Invited lecturer at "Jubilee Conference Orthopaedics University of Basel", Switzerland - September 24th and 25th, 2014

Invited lecturer and moderator at the 23:rd Annual Congress of the European Association of Tissue Banks Lund 1-3 October 2014

15th EFORT Congress in London, 4-6 Juni: Arranged 6 symposiums with 21 speakers. Lectured at three symposiums and moderator at three.

Attended at Swedish Orthopaedic Association Annual Congress Helsingborg 26-29 Aug

Organized an international congress: "European Hip Society 11:th international Congress Stockholm" Oct 9-11. 850 participants from 54 countries, 18 symposia and 250 free lectures. Lecturer in 3 symposiums and moderator in two.

7/11 Attended at the Swedish Hip and knee registry Meeting. Arlanda.

10-13 Nov Société Française de Chirurgie Orthopédique et Traumatologique (SOFOT). Invited lecturer.

TOTBID, Turkish National Congress of Orthopaedics and Traumatology, Antalya 12-16 Nov Invited Lecturer at two symposia

Chinese Orthopedic Association & World Orthopedic Association 2014 Congress 19-23 Nov Peking: Invited Lecturer at two symposia and moderator at a third.

Invited lecturer at "International Symposium Audit " 26-28/11 Berlin

Invited lecturer at a symposium at the Egyptian Orthopedic Association congress 2013, Dec 15-18 Kairo:

Invited speaker at: "10th Central European Orthopaedic Congress 8th to 11th May, 2014, Split Croatia"

Henrik Wallander

Consultant

PhD in 2009 on *Congenital clubfoot. Aspects on epidemiology, residual deformity and patient reported outcome* at the University of Uppsala.

Research area: congenital clubfoot

Ear, nose and throat

Mary Hägg

District Dentists

PhD in 2007 on *Sensorimotor Brain Plasticity in Stroke Patients with Dysphagia. A Methodological Study on Investigation and Treatment* at the University of Uppsala.

Research area: Stroke

Scientific articles:

Hägg M, Tibbling L. Effect of oral IQoro R and palatal plate training in post-stroke, four-quadrant facial dysfunction and dysphagia: A comparison study. *Acta Otolaryngol.* 2015 7 may: 1-7. [Epub ahead of print]

Hägg MK, Tibbling LI. Effects on facial dysfunction and swallowing capacity of intraoral stimulation early and late after stroke. *Neurorehabilitation.* 2015 1 January, 36 (1): 101-6

Hägg M, Tibbling L, Franzén T. Effect of IQoro(R) training in hiatal hernia patients with misdirected swallowing and esophageal retention symptoms. *Acta Otolaryngol.* 2015 July; 135 (7): 635-9

Hägg M, Tibbling L, Franzén T. Esophageal dysphagia and reflux symptoms before and after oral IQoro(R) training. *World J Gastroenterol.* 2015 28 June, 21 (24): 7558-62

Hägg M, Tibbling L. Effect of oral IQoro R and palatal plate training in post-stroke, four-quadrant facial dysfunction and dysphagia: A comparison study. *Acta Otolaryngol.* 2015 September; 135 (9): 962-8. doi: 10.3109 / 00016489.2015.1042043. Epub 2015 7 may

Books/chapters:

Carlsson E, Hägg M. Foods and Dietary supplements in the prevention and treatment of disease in older adults. Kapitel: Care for stroke patients with eating difficulties. Medförfattare fil.dr., utvecklingschef och forskningshandledare, sjuksköterska Eva Carlsson, Örebro läns landsting och Institutionen för hälsovetenskap och medicin, Örebro universitet. Publicerad 2015.

Hägg M. Beneficial Effects of Motor and Sensory Stimulation in Stroke Patients with Dysphagia. *Practices in Orofacial Therapy*, ISBN 951-29-1930-3, 2001.

Hägg M. My Role as a Dentist in the Team at the Speech & Swallowing Centre, Gävleborg County Council. *Practices in Orofacial Therapy*, ISBN 951-29-1930-3, 2001.

Hägg M. Normal Eating Development. *Practices in Orofacial Therapy*, ISBN 951-29-1930-3, 2001.

Hägg M. Orofacial regulation therapy in combination with Bensow palatal plate for patients with cerebral palsy. *Practices in Orofacial Therapy*, ISBN 951-29-1930-3, 2001.

Lärobok "DieOrofazialeregulationstherapie"; initierat och deltagit vid översättningsarbetet från tyska till svenska. Boken används i hela Norden. 1996.

Participation in national and international conferences:

2015 The 21st IAGG European Congress of Gerontology and Geriatrics, Dublin. Olai L, Hägg M, Stålnacke K, Carlsson E, Persenius M. Effects of swallowing training on eating, oral health and quality of care among elderly people in short-term care units – preliminary findings.

2015 20th European Association of Dental Public Health, Istanbul. Stålnacke K, Carlsson E, Olai L, Hägg M, Persenius M. OHRQoL, oral-health/care, eating and swallowing among elderly people in short-term accommodations in Sweden.

20/2 The Friday meeting of doctors at Hudiksvall SJH "From facial nerve dysfunction to a hiatus hernia "

26/2 Children's doctors in our province "Mouth functions-right treatment can make the impossible possible. Research with practical application '12 / 3 Specialist Dental Sundsvall "Oral Motors impact on the oral health of people with special needs"

27/5 For the general public in the county "Treatment of mouth features"

3/9 Odontology Research Unit, Centre for Specialist Örebro (doctors, dentists, speech therapists, nurses, intern, physiotherapists "A multidisciplinary affair: Life functions vital to breathing, eating / swallowing and speaking - Something new under the clouds?"

Other activities:

Patent 1350314-9 - expanded in many countries. Swedish patent on IQoro® 14/7 2014 (No. 1350314-9. IQoro® is a medical device developed based on my research, CE marked and registered design. Shape Plastic Factory in Ockelbo manufactures IQoro, which was launched in May 2014

CE marking LVFS 2003: 11§8, 2014-04-09

Design and design 002203141, 2013-03-15

Branding protection 509 870, 2013-01-04

Trademark protection 507 446, 2012-09-28

PhD Students at the Operation Division

Anesthesia

Catrine Björn

Surgical Nurse

Institution for Public Health and Caring Sciences

Doctoral thesis: *Significant factors for work attractiveness and how these differ from the current work situation among operating department nurses.*

Estimated dissertation: 2016

Scientific articles:

Sundin R Nilsson A, Waage-Andrée R, Björn C Nurses' Perceptions of Patient Safety in Community Mental Health Settings: A Qualitative Study. OJN> Vol.5 No.4, april 2015

Björn C, Lindberg M, Rissen D. Significant factors for work attractiveness and how these differ from the current work situation among operating department nurses. J Clin Nurs. 2015 September 30. doi: 10.1111 /jocn.13003. [Epub ahead of print]

Erik Näslund

Specialist

Institution for Physiology and Pharmacology

Doctoral thesis: *Determination of arterial oxygen saturation, with a new non-invasive method*

Estimated dissertation: 2021

Fredric Parenmark

Specialist

Institution for Medicine and Health

Doctoral thesis: *Intensive care Epidemiology*

Estimated dissertation: 2022

Surgery

Zakaria Bekhali

Consultant

Institution for Surgical Sciences

Doctoral thesis: *Duodenal switch (DS) for superobesity-changes in physiology and clinical results*

Estimated dissertation: 2020

Samuel Ersryd

Specialist

Institution for Surgical Sciences

Doctoral thesis: *Open repair of abdominal aortic aneurysm in the endovascular era With special emphasis on abdominal compartment and hypoperfusion syndromes*

Estimated dissertation: 2020

Participation in national and international conferences:
Presented the first in the thesis at the European Vascular Surgery Association (ESVs) annual congress and the Swedish Surgical Association's annual convention.

Petter Frühling

During Doctors ST
Institution for Surgical Sciences
Doctoral thesis: *Treatment options for colorectal cancer with spread to the liver*
Estimated dissertation: 2018

Kim Gunnarsson

Specialist
Institution for Surgical Sciences
Doctoral thesis: *Modern treatment of ruptured aortic aneurysm*
Estimated dissertation: 2019

Scientific articles:

Gunnarsson K, Wanhainen A, Djavani Gidlund K, Björck M, Mani K . Endovascular Versus Open Repair as Primary Strategy for Ruptured Abdominal Aortic Aneurysm: A National Population-based Study. *Eur J Vasc Endovasc Surg.* 2015 July 31. pii: S1078-5884 (15) 00519-5. doi: 10,1016 / j.ejvs.2015.07.001.
[Epub ahead of print]

Torbjörn Sakari

Consultant
Institution for Surgical Sciences
Doctoral thesis: *Ileus*
Estimated dissertation: 2021

Abolghasem Saraj

Consultant
Institution for Surgical Sciences
Doctoral thesis: *Complications and survival / cancer recurrence after resection of the rectum for rectal cancer.*
Estimated dissertation: 2022

Oncology

Amal Abu Sabaa

Consultant
Department of Radiology, Oncology and Radiation Science
Doctoral thesis: *Clinical and tumor biology studies of diffuse large B-cell lymphoma.*
Estimated dissertation: 2022

Per Fessé

Specialist Nurse, Quality coordinator
Institution of Oncology, Radiology and Clinical Immunology
Doctoral thesis: *Description of early/acute and late skin reaction (toxicity) after radiotherapy*
Estimated dissertation: 2015

Georg Holgersson

During Doctors ST
Institution of Oncology, Radiology and Clinical Immunology
Doctoral thesis: *New clinical predictive factors for response in patients with non-small cell lung cancer (NSCLC)*
Estimated dissertation: 2017

Scientific articles:

A phase I pilot study of the insulin-like growth factor 1 receptor pathway modulator AXL1717 in combination with gemcitabine HCl and carboplatin in previously untreated, locally advanced, or metastatic non-small cell lung cancer. *Med Oncol.* 2015 Apr;32(4):129.

Väntetider i lungcancervården - Patientlotsar gav snabbare flöde. *Läkartidningen.* 2015 Jun 2;112

Effect of Increased Radiotoxicity on Survival of Patients with Non-small Cell Lung Cancer Treated with Curatively Intended Radiotherapy. *Anticancer Res.* 2015 Oct;35(10):5491-7.

Patientlotsar ger kortare väntetider – Onkologi i Sverige Okt 2015

Randomized Trials of Systemic Medically-treated Malignant Mesothelioma: A Systematic Review. *Anticancer Res.* 2015 May;35(5):2493-501.

Eyes

Camilla Sandberg Melin

Consultant
Institution Neuroscience /Ophthalmology
Doctoral thesis: *Can measurements of the papillabrim size and / or nerve fiber layer thickness be used for clinical monitoring of glaucoma damage?*
Estimated dissertation: 2019

Participation in national and international conferences:

Oral presentation at the Swedish eye doctor Association annual meeting, in August 2015, Gothenburg.

Oral presentation at the European Association for Vision and Eye Research (EVER), in October 2015, Nice, France, the abstract was awarded a prize "best section abstracts, travel grant".

Items on Neuroscience Day, Dep. for neurovenskap, Uppsala University, in March 2015, Uppsala.

Poster presentation at the Light Day, Uppsala University, Nov. 2015 Gustavianum, Uppsala

Diagnostic division

PhD Students

Image and functional medicine

Olli Leppänen

Consultant

The Ludwig Institute for Cancer Research

Doctoral thesis: *Arterial Response to Injury and Inhibition of Ligand-induced Platelet-derived Growth Factor Beta-receptor Activation*

Estimated dissertation: 2015

Scientific article:

Vantler M, Jesus J, Leppänen O, Scherner M, Berghausen EM, Mustafov L, Chen X, Kramer T, Zierden M, Gerhardt M, Ten Freyhaus H, Blaschke F, Sterner-Kock A, Baldus S, Zhao JJ, Rosenkranz S. Klass IA Fosfatidylinositol 3-Kinase Isoform p110 α förmedlar kärlremodellering Arterioscler Thromb Vasc Biol. 2015 June, 35 (6): 1434-1444. doi: 10,1161 / ATVBAHA.114.304887. Epub 2015 23 april

Aavik E, Lumivuori H, Leppänen O, Wirth T, Häkkinen SK, koppar JH, Beschoner U, Zeller T, Braspenning M, van Criekinge W, Mäkinen K, Ylä-Herttuala S. Global DNA-metylering analys av humana aterosklerotiska plack avslöjar omfattande genomisk hypometylering och reaktivering vid präglade locus 14q32 innebär induktion av en miRNA kluster Eur Heart J

Jonny Nordström

Hospital physicist

Institution of Radiology, Oncology and Radiation Science Doctoral thesis: *5D-PET: Dynamic respiratory or cardiac gated PET scans*

Estimated dissertation: 2019

Participation in national and international conferences:

European association of nuclear medicine 2015, Hamburg, poster presentation.

Margareta Genberg-Andrén

Consultant

Institution for Medical Sciences

Doctoral thesis: *Ergospirometri - reference values and the method prognostic value in patients with COPD and CF, as well as after bonemarrowtransplant.*

Scientific articles:

Genberg M, Öberg A, Andrén B, Hedenström H, Frisk P, Flachskampf FA. Cardiac function after hematopoietic cell transplantation: an echocardiographic cross-sectional study in young adults treated in childhood. *Pediatr Blood Cancer*. 2015 Jan;62(1):143-7. doi: 10.1002/pbc.25135. Epub 2014 Sep 22

Laboratory Medicine

Karolina Gullsby

Molecular biologist

Institution for Medical Sciences, Clinical Microbiology and Infection Medicine

Doctoral thesis: *Molecular detection of microorganisms in patients with respiratory infection*

Estimated dissertation: 2016

Participation in national and international conferences:

Progress in human and animal mycoplasmaology, 3-5 juni 2015, Pendik, Turkiet - Posterpresentation

"Multi-center evaluation of quantitative PCR assays to detect *Mycoplasma pneumoniae*", samordnat av

Roger Dumke Institute of Medical Microbiology and Hygiene, Dresden, Germany.

Jonas Nilsson

During Doctors ST

Institution for Radiation Sciences

Doctoral thesis: *The Palliative Care in Sweden – is there regional-, socioeconomic- or ethnic differences?*

Estimated dissertation: 2022

Other activities:

Other manuscripts not yet published:

End-of-Life Care- where do cancer patients want to die? A systematic review

The use of complementary and alternative medicine (CAM) in Scandinavia; a review article

Incidence trends in high grade primary brain tumors in men and women. A systematic review focusing on potential environmental factors.

Incidence Rates in Low Grade Primary Brain Tumors- Are There Differences Between Men and Women?
A Systematic Review
Division Primary Care

Division Primary Care

Researchers

Family Health

Karin Sanner

Consultant

PhD in 2013 on “ *Significance of Human Papilloma Virus (HPV) - Analysis for the Detection of Precancerous Cervical Lesions – Impact of Self Sampling* ”

Research area: Cervix cancer

Primary Care Gävle.

Kristina Bröms

Family doctor, Research supervisor

PhD in 2010 on "A Nationwide Study of Asthma and Allergy in Swedish Preschool Children- with Special Reference to Environment, Daycare, Prevalence, Co-occurrence and Incidence" at the University of Uppsala.

Research area: Asthma and allergy in preschool

Primary Care Hudiksvall Nordanstig

Anders Wimo

Family doctor, professor

PhD in 1992 on "Dementia care alternatives in the Sundsvall-region, Sweden. Studies on symptoms, costs and quality of life" at the University of Umeå.

Research area: Elderly and dementia.

Agencies that support work/Funding 2015:

VR ca 2,8 milj/ 3 year

Soc dep (SNAC) ca 1,7 milj/ year

Scientific articles:

Sjölund BM, Wimo A, Engström M, von Strauss E. Incidence of ADL Disability in Older Persons, Physical Activities as a Protective Factor and the Need for Informal and Formal Care--Results from the SNAC-N Project. PLoS One. 2015 Sep 25;10(9):e0138901. doi: 10.1371/journal.pone.0138901. eCollection 2015.

Religa D, Fereshtehnejad SM, Cermakova P, Edlund AK, Garcia-Ptacek S, Granqvist N, Hallbäck A, Kåwe K, Farahmand B, Kilander L, Mattsson UB, Nägga K, Nordström P, Wijk H, Wimo A, Winblad B, Eriksson M. SveDem, the Swedish Dementia Registry - a tool for improving the quality of diagnostics, treatment and care of dementia patients in clinical practice. PLoS One. 2015 Feb 19;10(2):e0116538. doi: 10.1371/journal.pone.0116538. eCollection 2015

Bradley P, Akehurst R, Ballard C, Banerjee S, Blennow K, Bremner J, Broich K, Cummings J, Dening K, Dubois B, Klipper W, Leibman C, Mantua V, Molinuevo JL, Morgan S, Muscolo LA, Nicolas F, Pani L, Robinson L, Siviero P, van Dam J, Van Emelen J, Wimo A, Wortmann M, Goh L. Taking stock: A multistakeholder perspective on improving the delivery of care and the development of treatments for Alzheimer's disease. Alzheimers Dement. 2015 Apr;11(4):455-61

Lagergren M1, Fagerström C, Sjölund BM, Berglund J, Fratiglioni L, Nordell E, von Strauss E, Wimo A, Elmståhl S. Horizontal and vertical targeting: a population-based comparison of public eldercare services in urban and rural areas of Sweden. Aging Clin Exp Res. 2015 May 20. [Epub ahead of print]

Dodel R, Belger M, Reed C, Wimo A, Jones RW, Happich M, Argimon JM, Bruno G, Vellas B, Haro JM. Determinants of societal costs in Alzheimer's disease: GERAS study baseline results. Alzheimers Dement. 2015 Apr 4. pii: S1552-5260(15)00082-5. doi: 10.1016/j.jalz.2015.02.005. [Epub ahead of print]

Skillbäck T, Farahmand BY, Rosén C, Mattsson N, Nägga K, Kilander L, Religa D, Wimo A, Winblad B, Schott JM, Blennow K, Eriksson M, Zetterberg H. Cerebrospinal fluid tau and amyloid- β 1-42 in patients with dementia. Brain. 2015 Jun 30. pii: awv181. [Epub ahead of print]

- Wimo A, Winblad B. Brain Health: A Primary Health Care Viewpoint. *J Am Med Dir Assoc*. 2015 Jul 11. pii: S1525-8610(15)00423-5. doi: 10.1016/j.jamda.2015.06.012. [Epub ahead of print]
- Rosén C, Farahmand B, Skillbäck T, Nägga K, Mattsson N, Kilander L, Religa D, Wimo A, Blennow K, Winblad B, Zetterberg H, Eriksdotter M. Benchmarking biomarker-based criteria for Alzheimer's disease: Data from the Swedish Dementia Registry, SveDem. *Alzheimers Dement*. 2015 Jun 13. pii: S1552-5260(15)00185-5. doi: 10.1016/j.jalz.2015.04.007. [Epub ahead of print]
- Handels RL, Joore MA, Tran-Duy A, Wimo A, Wolfs CA, Verhey FR, Severens JL. Early cost-utility analysis of general and cerebrospinal fluid-specific Alzheimer's disease biomarkers for hypothetical disease-modifying treatment decision in mild cognitive impairment. *Alzheimers Dement*. 2015 Aug;11(8):896-905. doi: 10.1016/j.jalz.2015.02.009. Epub 2015 Jun 9
- Reed C, Belger M1, Vellas B, Andrews JS, Argimon JM, Bruno G, Dodel R, Jones RW, Wimo A, Haro JM. Identifying factors of activities of daily living important for cost and caregiver outcomes in Alzheimer's disease. *Int Psychogeriatr*. 2015 Aug 26:1-13. [Epub ahead of print]
- Sköldunger A, Fastbom J, Wimo A, Fratiglioni L, Johnell K. Impact of Inappropriate Drug Use on Hospitalizations, Mortality, and Costs in Older Persons and Persons with Dementia: Findings from the SNAC Study. *Drugs Aging*. 2015 Aug;32(8):671-8. doi: 10.1007/s40266-015-0287-4
- Wimo A, Sjölund BM, Sköldunger A, Qiu C, Klarin I, Nordberg G, von Strauss E. Cohort Effects in the Prevalence and Survival of People with Dementia in a Rural Area in Northern Sweden. *J Alzheimers Dis*. 2015 Nov 27;50(2):387-96. doi: 10.3233/JAD-150708.
- Reed C, Barrett A, Lebec J, Dodel R, Jones RW, Vellas B, Wimo A, Argimon JM, Bruno G, Haro JM. How Useful are Eq-5d And Zbi In Assessing The Impact of Caring for Alzheimer's Disease Patients? *Value Health*. 2015 Nov;18(7):A760. doi: 10.1016/j.jval.2015.09.2482. Epub 2015 Oct 20.
- Belger M, Argimon JM, Dodel R, Haro JM, Wimo A, Reed C. Comparing Resource Use In Alzheimer's Disease Across Three European Countries - 18-Month Results of The Geras Study. *Value Health*. 2015 Nov;18(7):A759-60 doi: 10.1016/j.jval.2015.09.2479. Epub 2015 Oct 20.
- Wimo A. Long-term effects of Alzheimer's disease treatment. *Lancet Neurol*. 2015 Dec;14(12):1145-6. doi: 10.1016/S1474-4422(15)00302-6. Epub 2015 Oct 27.

PhD Students

Primary Care, Gävle

Regina Bendrik

Physiotherapist

Institution for Public Health and Caring Sciences and the Division of General Practice and Primary prevention.

Doctoral thesis: *Methods for increasing physical activity and capacity in patients in primary care who have osteoarthritis of the knee / hip or chronic obstructive pulmonary disease.*

Estimated dissertation: 2021

Participation in national and international conferences:
Physiotherapy Congress 2015, poster presentation.

Elisabet Sundgren

District nurse
Institution for Public Health and Caring Sciences
Doctoral thesis: *Health and lifestyles of people with psychosis*.
Estimated dissertation: 2019

Agencies that support work/Funding 2015:

ALF medel från Akademiska Sjukhuset 200000 kr

Scientific articles:

Sundgren E, Hallqvist J, Fredriksson L. Disabil Rehabil. 2015 May 11:1-7. [Epub ahead of print]

Participation in national and international conferences:
EUPHA (European public health conferens) in Milan. Poster.

Annika Öst-Nilsson

Occupational Therapist
Institution for Neurology, Care Sciences and Society. Division of Occupational Therapy.
Doctoral thesis: *Person-centered rehabilitation for return to work after stroke*.
Estimated dissertation: 2019

Agencies that support work/Funding 2015:

Nationella Forskarskolan i Vårdvetenskap, Karolinska Institute 135000 kr

Participation in national and international conferences:
Nordic PhD Conference 11th to 12th November 2015 at the Karolinska Institute.

Division Medicine- Psychiatry

Researchers

Habilitation and Child Psychiatry

Patrik Arvidsson

Psychologist

PhD in 2013 on *Assessment of participation in people with a mild intellectual disability* at the University of Örebro.

Research area: disability, clinical psychology and rehabilitation

Scientific articles:

Arvidsson P, Granlund M, Thyberg M. (2015). How are the activity and participation aspects of the ICF used? Examples from studies of people with intellectual disability, *NeuroRehabilitation* 36, 45–49

Participation in national and international conferences:

How is the ICF concepts of activity and participation? Examples from studies of people with intellectual disabilities ", Norrköping, Quality Days of Swedish habilitation, 150,924th

Internal Medicine

Eva Brandén

Consultant

PhD in 2005 on *Chronic Infection with Chlamydia Pneumoniae in COPD and Lung Cancer* at the Karolinska Institute.

Research area: lungcancer, diagnosis

Agencies that support the work/Funding 2015:

RFR 435000 kr

Local Cancerfond 400000 kr

Scientific articles:

Brandén E, Hillerdal G, Kolbeck K, Koyi H. Pemetrexed and Gemcitabine Versus Carboplatin and Gemcitabine in Non-Small Cell Lung Cancer: A Randomized Noninferiority Phase II Study in One Center. *Oncologist* 2015 Apr;20(4):365. doi: 10.1634/theoncologist.2014-0181. Epub 2015 Mar 2.

Holgersson G, Bergström S, Harmenberg J, Ringbom M, Klockare M, Jerling M, Ekman S, Lamberg Lundström K, H, Brandén E, Larsson O, Bergqvist M. A phase I pilot study of the insulin-like growth factor 1 receptor pathway modulator AXL1717 in combination with gemcitabine HCL and carboplatin in previously untreated, locally advanced, or metastatic non-small cell lung cancer. *Med Oncol* 2015 Apr;32(4):129. doi: 10.1007/s12032-015-0578-y. Epub 2015 Mar 21.

Sandelin M, Berglund A, Micke P, Sundström M, Ekman S, Bergqvist M, Bergström S, Koyi H, Brandén E, Janson C, Botling J. Patients with Non-small Cell Lung Cancer Analyzed for EGFR: Adherence to Guidelines, Prevalence and Outcome.. *ANTICANCER RESEARCH* 35: 3979-3985 (2015)

Gréen H, Hasmats J, Kupersmidt I, Edsgård D, Luigi de Petris, Lewensohn R, Alexeyenko A, Blackhall F, Vikingsson S, Besse B, Lindgren A, Brandén E, Koyi H, Peterson C, Lundeberg J. Using whole

exome sequencing to identify genetic markers for carboplatin and gemcitabine induced toxicities. *Clinical Cancer Research*. 22(2):366-73, 2016 Jan 15.

Gréen H, Hasmats J, Kupersmidt I, Edsgård D, Luigi de Petris, Lewensohn R, Alexeyenko A, Blackhall F, Vikingsson S, Besse B, Lindgren A, Brandén E, Koyi H, Peterson C, Lundeberg J. Using Whole-Exome Sequencing to Identify Genetic Markers for Carboplatin and Gemcitabine-Induced Toxicities. *Clinical Cancer Research*. 2016 Jan 15;22(2):366-73. doi: 10.1158/1078-0432.CCR-15-0964. Epub 2015 Sep 16.

Koyi H, Hillerdal G, Andersson O, Kölbeck K-G, Liv P, Brandén E. Chemotherapy Treatment of Elderly Patients (> 70 Years) with Non-Small Cell Lung Cancer: A Seven-Year Retrospective Study of Real-Life Clinical Practice at Karolinska University Hospital, Sweden. *Lung Cancer International Volume 2015 (2015)*, Article ID 317868, 6 pages <http://dx.doi.org/10.1155/2015/317868>

Participation in national and international conferences:

Member in the Swedish Lung Cancer Study Group (SLUSG) national planning with extensive work with National guidelines for treatment of lung cancer with work for several years and which was completed in March 2015.

Member of SLMF (Swedish Lung Medical Association) Scientific Committee since 2014. Member of the Working Group on SMIL (Swedish Molecular Pathological initiatives in Lung cancer).

March 2015 Gulf Thoracic Dubai. Award winning poster / lecture.

Sept 2015 16th World Conference on Lung Cancer (IASLC) in Denver, Colorado, USA. Co-author of four posters and two presentations.

Marieann Högman

Research supervisor, professor

PhD in 1994 on *Bronchial reactivity in rabbits and humans. Modulation with nitric oxide and hypertonic saline* at the University of Uppsala.

Research area: respiratory physiology and pathophysiology

Scientific articles:

Thornadtsson A, Neerinx AH, Högman M, Hugen C, Sintnicolaas C, Harren FJ, Merkus PJ, Cristescu SM. *J Breath Res*. 2015;9(4):047114. doi: 10.1088/1752-7155/9/4/047114. Extended nitric oxide analysis may improve personalized anti-inflammatory treatment in asthmatic children with intermediate FENO50. PMID: 26670199

Patelis A, Dosanjh A, Gunnbjörnsdottir M, Borres MP, Högman M, Alving K, Janson C, Malinovschi A. New data analysis in a population study raises the hypothesis that particle size contributes to the pro-asthmatic potential of small pet animal allergens. *Ups J Med Sci*. 2015 Nov 26:1-8. PMID: 26610050

Patelis A, Gunnbjörnsdottir M, Alving K, Borres MP, Högman M, Janson C, Malinovschi A. Allergen extract vs component sensitisation and airway inflammation, responsiveness and new-onset respiratory disease. *Clin Exp Allergy*. 2015 Aug 4. doi: 10.1111/cea.12607. [Epub ahead of print] PMID: 26243058

Participation in national and international conferences:

European Respiratory Society in Amsterdam: Abstract reviewer, Chairman for session Monitoring airways diseases, Status meeting of Task force of Exhaled biomarkers in lung disease (chair of the NO part), Poster presentation: Extended NO analysis is useful to modify anti-inflammatory treatment in asthmatic children with intermediate FENO50

Internations Association for Breath Research: 10-year anniversary in Vienna. Invited keynote speaker on the theme NO - past, present and future. Elected IABR Chair elect. <http://breathsummit.com>

Invited as a guest professor at the Institute fur Epidemiology, Biostatistics und prevention, University of Zurich.

Invited as an international keynote speaker at their 25th anniversary.

Invited to Medizinische Universität, Innsbruck, for visits of Breath Research Institute, whose task is to put myself in the work Chair elect IABR.

Regional research meeting TIE study (Gävleborg, Dalarna Uppsala and Uppsala University)

Organized two meetings for entrepreneurs (Gävleborg, Västmanland, Stockholm) in the exhaled gas analysis at the Institution of Medical Sciences at the University of Uppsala.

Hirsh Koyi

Consultant

PhD in 2001 on *Lung cancer in the county of Gävleborg : Epidemiology and importance of infection with Chlamydia pneumoniae* at Karolinska Institutet.

Research area: Respiratory Medicine, lung cancer

Scientific articles:

Koyi H, Hillerdal G, Olov Andersson, Köllbeck K G, Liv P, Brandén E. Chemotherapy treatment of elderly patients (> 70 years) with non-small cell lung cancer. A five-year material in clinical practice from Karolinska University Hospital – Sweden. *Lung cancer International*. Volume 2015, Article ID 317868, 6 pages <http://dx.doi.org/10.1155/2015/317868>

Green H, Hasmats J, Kupersmidt I, Edsgard D, de Petris L, Lewensohn R, Blackhall FH, Vikingsson S, Besse B, Lindgren A, Koyi H, Branden E, Peterson C, Lundeberg J. Using Whole-Exome Sequencing to Identify Genetic Markers for Carboplatin and Gemcitabine-Induced Toxicities. *Clin Cancer Res*. 2015 Sep 16. pii: clincanres.0964.2015. [Epub ahead of print]

Koyi H, Johansson L, From J, Nyrén S. Biopsy testing in an inoperable, non-small cell lung cancer population—a retrospective, real-life study in Sweden. *J Thorac Dis* 2015;7(12):2226-2233. doi: 10.3978/j.issn.2072-1439.2015.12.52

Iadaresta F, Crescenzi C, Amini A, Colmsjö A, Koyi H, Abdel-Rehim M. Application of graphitic sorbent for online microextraction of drugs in human plasma samples. *J Chromatogr A*. 2015 Oct 20. pii: S0021-9673(15)01469-7. doi: 10.1016/j.chroma.2015.10.025.

Elmongy H, Ahmed H, Wahbi AA, Koyi H, Abdel-Rehim M. Online post-column solvent assisted and direct solvent-assisted electrospray ionization for chiral analysis of propranolol enantiomers in plasma samples. *J Chromatogr A*. 2015 Oct 30;1418:110-8. doi: 10.1016/j.chroma.2015.09.051. Epub 2015 Sep 25. PMID: 2642230

Holgersson G, Bergström S, Harmenberg J, Ringbom M, Klockare M, Jerling M, Ekman S, Lundström KL, Koyi H, Brandén E, Larsson O, Bergqvist M. A phase I pilot study of the insulin-like growth factor 1 receptor pathway modulator AXL1717 in combination with gemcitabine HCl and carboplatin in previously untreated, locally advanced, or metastatic non-small cell lung cancer. *Med Oncol*. 2015 Apr;32(4):129. doi: 10.1007/s12032-015-0578-y. Epub 2015 Mar 21.

Branden E, Hillerdal G, Kolbeck K, Koyi H. Pemetrexed and gemcitabine versus carboplatin and gemcitabine in non-small cell lung cancer: a randomized noninferiority phase II study in one center. *Oncologist*. 2015 Apr;20(4):365. doi: 10.1634/theoncologist.2014-0181. Epub 2015 Mar 2.

Sandelin M, Berglund A, Sundström M, Micke P, Ekman S, Bergqvist M, Bergström S, Koyi H, Brandén E, Janson C7, Botling J. Patients with Non-small Cell Lung Cancer Analyzed for EGFR: Adherence to Guidelines, Prevalence and Outcome. *Anticancer Res.* 2015 Jul;35(7):3979-85.

Holgersson G, Bergqvist M, Koyi H, Berglund A, Lambe M, Bergström S. Väntetider i lungcancervården - Patientlotsar gav snabbare flöde. *Lakartidningen.* 2015 Jun 2;112

Tomas Weitoft

Consultant, Research supervisor

PhD in 2005 on *Intra-articular Glucocorticoid Treatment: Efficacy and Side Effects* at the University of Uppsala.

Research area: Rheumatological treatment

Scientific articles:

Weitof T, Larsson A, Manivel VA, Lysholm J, Knight A, Rönnelid J. Cathepsin S and cathepsin L in serum and synovial fluid in rheumatoid arthritis with and without autoantibodies. *Rheumatology (Oxford).* 2015 Oct;54(10):1923-8. doi: 10.1093/rheumatology/keu486. Epub 2015 Jun 8

Bookchapter:

Kapitlet "Ledpunktioner" i *Vårdhandboken (Inera)*

Special Medicine

Lars Wesslén

Consultant

PhD in 2001 on *Sudden Cardiac Death in Swedish Orienteers* at the University of Uppsala.

Research area: Infections and sport

Scientific articles:

Lindström I, Kjellin M, Palanisamy N, Bondeson K, Wesslén L, Lannergard A, Lennerstrand J. Prevalence of polymorphisms with significant resistance to NS5A inhibitors in treatment-naive patients with hepatitis C virus genotypes 1a and 3a in Sweden. *Infect Dis (Lond).* 2015 Aug;47(8):555-62. doi: 10.3109/23744235.2015.1028097. Epub 2015 Apr 8

Agencies that support work/Funding 2015:

RFR 300000 kr

Roche 354000 kr (2013-2015)

Marianne Lannsjö

Consultant

PhD in 2012 on *Mild Traumatic Brain Injury – studies on outcome and prognostic factors* at the University of Uppsala.

Research area: Rehabilitation medicine

Participation in national and international conferences:

Presentation of the study of the records of WebRehab (quality) on the annual quality days 15-10-01 / 02.

Dissertation

Kristina Nordstrand Vroland

Occupational Therapist, investigator at the Department of Community Medicine
Institution of Women's and Children's Health at the Karolinska Institute

PhD in 18 september 2015

Doctoral thesis: *Goal setting and skills achievement in children with disabilities*

Scientific articles:

Vroland-Nordstrand K, Eliasson AC, Jacobsson H, Johansson U, Krumlinde-Sundholm L. Can children identify and achieve goals for intervention? A randomized trial comparing two goal-setting approaches. *Dev Med Child Neurol*. 2015 September 16. doi: 10.1111 / dmcn.12925.

Participation in national and international conferences:

Presentations at Quality Days Habilitation, Norrköping in 2015, At-forum Gothenburg 2015 Invited lecturer CPUP days, Stockholm 2015.

PhD Students

Habilitation and Child Psychiatry

Adam Helles

Psychologist

Institution for Neuroscience and Physiology

Doctoral thesis: *A follow up study of young adults diagnosed with Aspergers syndrome in childhood*

Estimated dissertation: 2016

Scientific articles:

Gillberg IC, Helles A, Billstedt E, Gillberg C. Boys with Asperger Syndrome Grow Up: Psychiatric and Neurodevelopmental Disorders 20 Years After Initial Diagnosis. *J Autism Dev Disord*. 2016 Jan;46(1):74-82. doi:10.1007/s10803-015-2544-0. PubMed PMID: 26210519.

Helles A, Gillberg CI, Gillberg C, Billstedt E. Asperger syndrome in males over two decades: stability and predictors of diagnosis. *J Child Psychol. Psychiatry*. 2015 Jun;56(6):711-8. doi: 10.1111/jcpp.12334. Epub 2014 Oct 4. PubMed PMID: 25283685.

Elin Monell

Psychologist

Institution for Neuroscience

Doctoral thesis: *Emotion regulation, self-image and eating disorders*.

Estimated dissertation: 2022

Scientific articles:

Monell E, Högdahl L, Mantilla EF, Birgegård A. Emotion dysregulation, self-image and eating disorder symptoms in University Women. *J Eat Disord*. 2015 1 december, 3: 44. doi: 10,1186 / s40337-015-0083-x.eCollection 2015

Internal Medicine

Johan Isaksson

Consultant

Institution for Immunology, Genetics and Pathology

Doctoral thesis: *Tumor Biology at the non-small cell lung cancer and its impact on treatment outcomes and survival.*

Estimated dissertation: 2023

Agencies that support work/Funding 2015:

Gävle cancerfond 400000 kr

RFR 435000 kr (ej huvudsökande)

Other activities:

Start-up of the U-CAN Lungcancer Gavle

Andreas Palm

Consultant

Institution of Medical Sciences

Doctoral thesis: *Effects of obesity on survival, lung function, metabolism and sleep*

Estimated dissertation: 2018

Scientific articles:

Palm, A., C. Janson, and E. Lindberg, The impact of obesity and weight gain on development of sleep problems in a population-based sample. *Sleep Med*, 2015.

Palm, A., et al., Gender differences in patients starting long-term home mechanical ventilation due to obesity hypoventilation syndrome. *Respir Med*, 2016. 110: p. 73-8.

Cardiology

Peter Magnusson

Consultant

Institution for Medicine

Doctoral thesis: *ICD therapy in patients with hypertrophic cardiomyopathy*

Estimated dissertation: 2020

Scientific articles:

Hypertrophic Cardiomyopathy and Implantable Defibrillators in Sweden: Inappropriate Shocks and Complications Requiring Surgery. Magnusson P, Gadler F, Liv P, Mörner S. *J Cardiovasc Electrophysiol*. 2015 Oct;26(10):1088-94. doi: 10.1111/jce.12750.

Participation in national and international conferences:

Cardiology Update, Davos 2015 (poster, oral presentation): Gender perspectives on implantable defibrillators in hypertrophic cardiomyopathy

Cardiovascular Springmeeting, Örebro 2015 (poster) Evaluation of Implantable Loop Recorders in Patients with Unexplained Syncope.

Special Medicine

Margareta Gonzalez Lindh

Speech Therapist

Department for Neuroscience / Speech Therapy

Doctoral thesis: Swallowing difficulties in patients with respiratory dysfunction

Estimated dissertation: 2021

Scientific articles:

"Dysfagi - Ett skifte mot ny klinisk praxis" i "Logopeden" nr 2 2015

Participation in national and international conferences:

With speech therapy program, UU, arranged and participated in the International Conference in "Pediatric swallowing and feeding. Assessment and Intervention" University Hall, Uppsala 15 to 16 October 2015 with Professor Joan Arvedson, the University of Wisconsin.

Amanda Häggblom

During Doctors ST

Institution for Medicine

Doctoral thesis: *Antiretroviral drug resistance and treatment outcome of HIV-1 infection*

Estimated dissertation: 2016

Scientific articles:

Nyström J, Stenkvist J, Häggblom A, Weiland O, Nowak P. Low levels of microbial translocation marker LBP are associated with sustained viral response after anti-HCV treatment in HIV-1/HCV co-infected patients. PLoS One. 2015 18 mars, 10 (3): e0118643. doi: 10.1371 / journal.pone.0118643. eCollection 2015

Vesterbacka J, Barqasho B, Häggblom A, Nowak P. Effects of Co-Trimoxazole on Microbial Translocation in HIV-1-Infected Patients Initiating Antiretroviral Therapy. AIDS Res Hum Retroviruses. 2015 Juni 15. [Epub ahead of print]

Karin Myrberg

Speech therapist

Institution for Medical Sciences

Doctoral thesis: *Interaction Patterns in aphasia and dementia - conversation analysis as a basis for logopedic interventions*

Estimated dissertation: 2021

Participation in national and international conferences:

OFTI, Sector Committee for research on speech and interaction, Linköping 17-18 / 9

Charilaous Koufidis

Consultant

Institution for Medical Sciences

Doctoral thesis: *Transforming the often chaotic and opportunistic undergraduate clinical experience into a pragmatic learning environment – from passive observation to active participation*
Estimated dissertation: 2022

Participation in national and international conferences:
AMEE (Association Medical Education Euroe) congress Glasgow september 2015

Adult Psychiatry

Anneli Thylin

Nurse

Institution for Social Medicine and Global Health

Doctoral thesis: *Social capital as a strategy to promote health among the national minorities in Sweden - forms, sources, availability and limitations.*

Management and Operational Support – LOV

Researcher

Eva Sving

Nurse, Patient safety coordinator

Institution for Public Health and Caring Sciences

PhD in 2014 on *Pressure Ulcer Prevention: Performance and Implementation in Hospital Settings*

Participation in national and international conferences:
Conference organized by the European Pressure Ulcer Advisory Panel, Ghent September 2015

PhD Students

Johanna Sulku

Clinical pharmacists

Institution for Pharmaceutical Biosciences

Doctoral thesis: *Mapping and optimization of drug therapy in COPD*

Estimated dissertation: 2020

Participation in national and international conferences:

Poster in the conference Pharmacy Days in Helsinki

Alexandra Thornadtsson

Intern

Institution for Medical sciences

Doctoral thesis: *Clinical benefit of alveolar nitric oxide in the diagnosis and treatment.*

Estimated dissertation: 2021

Scientific articles:

Thornadtsson A, Neerincx AH, Högman M, Hugén C, Sintnicolaas C, Harren FJ, Merkus PJ, Cristescu SM. Extended nitric oxide analysis may improve personalized anti-inflammatory treatment in asthmatic children with intermediate F(E)NO₅₀. *J Breath Res.* 2015 Dec 15;9(4):047114. doi: 10.1088/1752-7155/9/4/047114.

Participation in national and international conferences:

European Respiratory Society - congress 26-30 September 2015

Regional research meeting with TIE group (COPD study) repeatedly.

Center for Research and Development Gävleborg - CFUG

Researchers

Lennart Fredriksson

Research supervisor

PhD in 2003 on *The caring conversation at Åbo Academy, Finland.*

Research area: Health and living habits of the mentally disabled, conversation and communication.

Scientific articles:

Vincze M, Fredriksson L, Wiklund Gustin L. To do good might hurt bad: Exploring nurses' understanding and approach to suffering in forensic psychiatric settings' *International Journal of Mental Health Nursing* (2015)

Sundgren E, Hallqvist J Fredriksson L. Health for smokers with schizophrenia - a struggle to maintain a dignified life. *Disabil Rehabil.* 2015 11 Maj: 1-7. [Epub ahead of print]

Slettebø Å, Fredriksson L . The significance of caring. *Scand J Caring Sci.* 2015 juni, 29 (2): 203-4.

Participation in national and international conferences:

Key-note föreläsning vid 9e Nordiska hermeneutikseminariet. Förförståelsens förhållande till det vi ännu är ovetande om. Oslo den 9-10 november 2015. Arrangerat av Nordisk Postdoktoralt Sällskap for Caring Science och Högskolan i Oslo og Akershus.

Sving, E., Fredriksson, L., Gunningberg, L. & Mamhidir, A-G. (2015) Implementation of evidence based pressure ulcer prevention in hospital units-important factors for success. European Pressure Ulcer Advisory Panel. Oral presentation, 16 – 18 september 2015, Ghent, Belgium.

Sundgren, E., Hallqvist, J. & Fredriksson, L. (2015) Schizophrenia, smoking and health-a struggle to maintain a dignified life, a qualitative study. EPH, European Public Health Conference. Poster, 14-17 october 2015, Milano, Italy.

Other activities:

Associate Editor for Scandinavian Journal of Caring Sciences, 2012-2016.

Board member Foundation Nordic College for Caring Science research fund.

Per Liv

Statistician

PhD in 2012 on *Some properties of measures of disagreement and disorder in paired ordinal data* at the University of Örebro.

Research area: Medical statistics

Scientific articles:

Magnusson, P., Gadler, F., Liv, P., & Mörner, S. (2015). Hypertrophic Cardiomyopathy and Implantable Defibrillators in Sweden: Inappropriate Shocks and Complications Requiring Surgery. *Journal of cardiovascular electrophysiology*, 26(10), 1088-1094.

Holgersson, G., BERGSTRÖM, S., Liv, P., Nilsson, J., Edlund, P., Blomberg, C., ... & Henriksson, R. (2015). Effect of Increased Radiotoxicity on Survival of Patients with Non-small Cell Lung Cancer Treated with Curatively Intended Radiotherapy. *Anticancer Research*, 35(10), 5491-5497.

Jackson, J. A., Mathiassen, S. E., Wahlström, J., Liv, P., & Forsman, M. (2015). Is what you see what you get? Standard inclinometry of set upper arm elevation angles. *Applied ergonomics*, 47, 242-252.

Dag Rissén

Research supervisor

PhD in 2006 on *Repetitive and monotonous work among women: Psychophysiological and subjective stress reactions, muscle activity and neck and shoulder pain* at the University of Stockholm.

Research area: Working environment, stress and musculoskeletal disorders

Scientific articles:

Björn, C., Josephson, M., Wadensten, B., Rissén, D. Prominent attractive qualities of nurses work in operating room departments – a questionnaire study. *Work: A Journal of Prevention, Assessment & Rehabilitation*. doi: 10.3233/WOR-152135

Björn, C., Lindberg, M., Rissén, D. Significant factors for work attractiveness and how these differ from the current work situation among operating department nurses. *Journal of Clinical Nursing*. doi: 10.1111/jocn.13003

Participation in national and international conferences:

Rissén, D, Fjellman-Wiklund, A & Röijezon, U (2015), 'Prevalence, intensity, and playing related consequences of musculoskeletal pain, and associations with mood among professional orchestra musicians – a pilot study'. i *Musician's Health and Performance. 2nd Conference (MHPC2015): Book of Abstracts.*, 12, Odense.

Röijezon, U, Ardel, D, Rissén, D, Fjellman-Wiklund, A & Juul-Kristensen, B (2015), 'Generalised Joint Hypermobility and musculoskeletal pain among professional classical orchestra musicians in Sweden: a pilot study'. i *Musician's Health and Performance. 2nd Conference (MHPC2015): Book of Abstracts.*, 49, Odense.

Johansson, S, Rissén, D, Fjellman-Wiklund, A, Paarup, HM & Röijezon, U (2015), 'Musculoskeletal pain, work posture and physical activity among professional symphony and opera musicians in Sweden'. i *Musician's Health and Performance. 2nd Conference (MHPC2015): Book of Abstracts.*, 45, Odense.

Other activities:

Convener of the Nominating Committee of Swedish Society of Behavioral Medicine.

Member of the Priority Committee of the Regional Research in Uppsala-Örebro region since 2015.

Katarina Wijk

Head of the Department for Research and Development. Head of the Department for Community medicine. Associate Professor.

PhD in 2003 on *Planning and Implementing Health Interventions* at the University of Uppsala.

Research area: Intervention Theories, Changing processes, Occupational Health Sciences

Scientific articles:

Hiswåls, A-S., Ghilagaber, G., Wijk, K. Öberg, P., Soares, J., Macassa, G. (2015)

Employment status and suicidal ideation during economic recession *Health Science Journal Volume 9, Issue 1:13*

Nordlöf, H., Wiltavaara, B., Winblad, U., Wijk, K., Westerling, R. (2015) Safety culture and reasons for risk-taking at a large steel-manufacturing company: Investigating the worker perspective *Safety Science. Safety Science 73, 126-135*

Nordlöf, H., Wijk, K., Westergren, K.-E. (2015) Perceptions of work environment priorities: Are there any differences by company size? —An ecological study *WORK: A Journal of Prevention, Assessment, and Rehabilitation, Volume 52, Issue 3, 697-706*.

Other activities:

Director of the Uppsala-Örebro Regional Research Council, RFR

Ulrika Östlund

Research supervisor

PhD in 2008 on *Quality of life and health in oncology nursing, patient perspectives and family perspective at the Karolinska Institute.*

Research area: Oncology nursing

Scientific articles:

Johnston B, Larkin P, Connolly M, Barry C, Narayanasamy M, Östlund U, McIlpatrick S.

Dignity-conserving care in palliative care settings: An integrative review.. J Clin Nurs. 2015 Jul;24(13-14):1743-72. doi: 10.1111/jocn.12791. Epub 2015 Feb 23.

Östlund U, Bäckström B, Lindh V, Sundin K, Saveman BI.. Nurses' fidelity to theory-based core components when implementing Family Health Conversations - a qualitative inquiry.. Scand J Caring Sci. 2015 Sep;29(3):582-90. doi: 10.1111/scs.12178. Epub 2014 Sep 18.

Sundin Karin, Pusa Susanna, Lundstedt Erika, Wincent Nina, Östlund Ulrika, Bäckström Britt, Lindh Viveca, Britt-Inger Saveman.. What couples choose to focus on during nurse-led Family Health Conversations when suffering stroke. International Journal for Human Caring, 2015, 19(2), 21-28.

Lämås Kristina, Sundin Karin, Jacobsson Catrine, Saveman Britt-Inger, Östlund Ulrika.

Possibilities for evaluating cost-effectiveness of family system nursing: An example based on Family Health Conversations with families in which a middle-aged family member had suffered stroke.

Nordic Journal of Nursing Research. 2015;0(0): 1–8. doi:10.1177/0107408315610076

National Dental Service, Gävleborg AB

Researchers

Ingalill Feldmann

Consultant dentist

PhD in 2007 on *Orthodontic anchorage – Evidence-based evaluation of anchorage capacity and patients' perceptions* at the Faculty of Odontology, the University of Malmö.

Research area: orthodontics

Books/chapter:

Feldmann I, Bondemark L, The significance of anchorage in orthodontics. In: Papadopoulos MA (editor). Skeletal Anchorage in Orthodontic Treatment of Class II Malocclusion - Contemporary appliances of orthodontic implants, miniscrew implants and miniplates. Mosby 2014 p 22-29

Participation in national and international conferences:

Feldmann I, Bazargani F. Pain and discomfort during the first week of rapid maxillary expansion (RME) - preliminary results from a randomized controlled trial. Poster presentation World Federation of Orthodontics 2015.

Ganzer N, Feldmann I, Bondemark L. Smärta och obehag vid insättning av miniskruvar och premolarextraktioner – en randomiserad kontrollerad studie. Rapport vid Odontologiska Riksstämman 2015.

Other activities:

Member of the editorial board at : American Journal of Orthodontics and Dentofacial Orthopedics, USA

Peer reviewer at:

The Angle Orthodontist, USA

J of Orofacial Pain, USA

European Journal of Orthodontics

Mats Hallman

Consultant dentist, associate Professor

PhD in 2002 on *Healing of Titanium Implants in Xenograft* at the University of Umeå.

Research area: Experimental and Clinical biomaterials research.

Scientific articles:

Mordenfeld A, Lindgren C, Hallman M. Sinus Floor Augmentation Using Straumann® BoneCeramic™ and Bio-Oss® in a Split Mouth Design and Later Placement of Implants: A 5-Year Report from a Longitudinal Study. Clin Implant Dent Relat Res. 2015 September 10. doi: 10.1111 / cid.12374.

Anders Holmlund

Consultant dentist

PhD in 2008 on *Oral inflammation and cardiovascular disease* at the University of Uppsala.

Research area: Oral inflammation and the relationship between oral health and general diseases with emphasis on heart disease.

Scientific articles:

Edman K, Öhrn K, Nordström B, Holmlund A, Hellberg D. Trends over 30 years in the prevalence and severity of alveolar bone loss and the influence of smoking and socio-economic factors--based on epidemiological surveys in Sweden 1983-2013. Int J Dent Hyg. 2015 Nov;13(4):283-91. doi: 10.1111/idh.12164. Epub 2015 Jul 27

Participation in national and international conferences:

Poster presented at the American College of Cardiology Scientific Conference March 14 to 16 2015, San Diego

Oral presentation at Europerio 8 meeting in London 3 to 6 June 2015. On both these abstract I am first author. In 2 more abstract, I am co-author of the Europerio8 in London 2015.

Christer Lindgren

Consultant dentist

PhD in 2012 on *Healing of titanium implants in biphasic calcium Phosphate* at the University of Uppsala.

Research area: Long-term Follow-up of dental implants inserted in the bone replacement material.

Scientific articles:

Mordenfeld A, Lindgren C, Hallman M1. Sinus Floor Augmentation Using Straumann® BoneCeramic™ and Bio-Oss® in a Split Mouth Design and Later Placement of Implants: A 5-Year Report from a Longitudinal Study. Clin Implant Dent Relat Res. 2015 Sep 10. doi: 10.1111/cid.12374. [Epub ahead of print]

Arne Mordenfeld

Consultant dentist

PhD in 2013 on *Tissue reactions and resorption of bone substitutes at the University of Malmö*.

Scientific articles:

Mordenfeld A, Lindgren C, Hallman M1. Sinus Floor Augmentation Using Straumann® BoneCeramic™ and Bio-Oss® in a Split Mouth Design and Later Placement of Implants: A 5-Year Report from a Longitudinal Study. Clin Implant Dent Relat Res. 2015 September 10. doi: 10.1111 / cid.12374. [Epub ahead of print]

Slotte C, Grønningsaeter A, Halmøy AM, Öhrnell LO, Mordenfeld A, Isaksson S, Johansson LÅ . Four-Millimeter-Long Posterior-Mandible Implants: 5-Year Outcomes of a Prospective Multicenter Study. Clin Implant Dent Relat Res. 2015 Oct;17 Suppl 2:e385-95. doi: 10.1111/cid.12252. Epub 2014 Jul 17

PhD Students

Niels Ganzer

Consultant dentist

Institution for Orthodontics.

Doctoral thesis: *Screws anchoring the orthodontic treatment - randomized controlled trials of change capacity, cost and patient acceptance*

Estimated dissertation: 2017.

Participation in national and international conferences:

Dental research was held at the National Conference, 11/2015, Göteborg.

Catrine Isched

Consultant dentist

Institution for Molecular Periodontology

Doctoral thesis: *Regenerative treatment of peri implants - clinical effects, and microbiological and molecular mechanisms. A randomized clinical trial.*

Estimated dissertation: 2021.

Participation in national and international conferences:

An oral presentation of the items on the Congress Europerio 8 in London in June 2015.

Research report presented orally at the Dental National Meeting in November 2015.

Scientific Reports 2014

This section is divided by Division, further divided by Researchers, PhD Students or Dissertations and finally divided by Work area and employee including Research area, Publications (scientific articles), Dissertations and if Agencies have been supporting the work during 2014.

Diagnostic division

PhD Students

Registered at the University of Uppsala.

Olli Leppänen

Resident physician

Institution: Ludwig Institute for Cancer Research, Uppsala University

Doctoral thesis: *Arterial Response to Injury and Inhibition of Ligand-induced Platelet-derived Growth Factor Beta-receptor Activation*

Estimated dissertation: 2015

Scientific articles:

Doltra A, Messroghli D, Stawowy P, Hassel JH, Gebker R, Leppänen O, Gräfe M, Schneeweis C, Schnackenburg B, Fleck E, Kelle S. Potential reduction of interstitial myocardial fibrosis with renal denervation. *J Am Heart Assoc.* 2014 Dec; 3(6):e001353

Karolina Gullsby

Microbiologist

Institution for Medical Sciences, Clinical Microbiology and Infection Medicine

Doctoral thesis: *Molecular detection of microorganisms in patients with respiratory infection*

Estimated dissertation: 2016

Jonny Nordström

Medical physicist

Institution for Radiology, Oncology and Radiation Science

Doctoral thesis: *5D-PET: Dynamic respiratory or cardiac gated PET scans*

Estimated dissertation: 2019

Division medical Psychiatry

Researchers

Patrik Arvidsson

Psychologist

PhD in 2013 on "Assessment of participation in people with a mild intellectual disability" at Örebro University.

Research area: disability, clinical psychology and rehabilitation.

Keywords: ICF, participation, self-ratings, intellectual disability, clinimetrics, psychometrics, rehabilitation, interventio

Scientific articles:

Thyberg M, Arvidsson P, Thyberg I, Nordenfelt L. Simplified bipartite concepts of functioning and disability recommended for interdisciplinary use of the ICF. *Disabil Rehabil.* 2014;3:1-10

Arvidsson P, Granlund M, Thyberg I, Thyberg M. Important aspects of participation and participation restrictions in people with a mild intellectual disability. *Disabil Rehabil.* 2014;36:1264-72

Arvidsson P, Granlund M, Thyberg M. How are the activity and participation aspects of the ICF used? Examples from studies of people with intellectual disability. *NeuroRehabilitation.* (Epub dec 2014)

Participation in national and international conferences:

2014-06-12—14 ECIDD. "Assessing participation in people with a mild intellectual disability: the contribution of a perceived qualifier", Linköping (oral presentation)

2014-10-20 IHV-Day "Practical benefits of IHV's research. Example: Mild mental retardation and everyday functioning, "Stockholm.

Eva Brandén

Consultant

PhD in 2005 on " *Chronic Infection with Chlamydia Pneumoniae in COPD and Lung Cancer*" at the Karolinska Institute.

Research Area: Lungcancer diagnosis.

Keywords: Carcinoma; Non-small-cell lung cancer; Prognosis; Differential diagnosis; Apoptosis; Necrosis

Scientific articles:

Brandén E, Wallgren S, Högberg H, Koyi H. Computer tomography-guided core biopsies in a county hospital in Sweden: Complication rate and diagnostic yield. *Ann Thorac Med.* 2014;9:149-53

Participation in national and international conferences:

2014-05-08-10 SLUSG (Swedish Lung Cancer Study Group meeting) in Ystad

2014-05-30-06-03 ASCO 50th Annual Meeting (Science & Society) Chicago, Illinois

Moderator at the Medical Meeting Symposium "Targeted therapy for lung cancer"

Ulla I Johansson

Occupational Therapist

PhD in 2004 on "*Long-term outcome after brain injury with focus on work re-entry, life satisfaction and participation*" at the University in Umeå.

Research area: Rehabilitation after brain injury, the IT technology tools.

Keywords: rehabilitation, participation, stroke, work.

Scientific articles:

Bertilsson AS, Ranner M, vonKoch L, Eriksson G, Johansson U, Ytterberg C, Guidetti S, Tham K.

A client-centred ADL intervention: three-month follow-up of a randomized controlled trial.

Scand J Occup Ther. 2014;21:377-91

Guidetti S, Ytterberg C, Ekstam L, Johansson U, Eriksson G. Changes in the impact of stroke between 3 and 12 months post-stroke, assessed with the Stroke Impact Scale. J Rehabil Med. 2014;46:963-8

Participation in national and international conferences:

September 2014: EUMASS (The European Union of Medicine in Assurance and Social Security).

Conference in Stockholm.

Hirsh Koyi

Consultant

PhD in 2001 on "*Lung cancer in the county of Gävleborg : Epidemiology and importance of infection with Chlamydia pneumoniae*" at Karolinska Institutet.

Research area: Respiratory Medicine, lung cancer

Keywords: lungcancer, chronic obstructive lung disease, proteomix.

Scientific articles:

Brandén E, Wallgren S, Högberg H, Koyi H. Computer tomography-guided core biopsies in a county hospital in Sweden: Complication rate and diagnostic yield. Ann Thorac Med. 2014;3:149-53.

Magnus Lindberg

Nurse, Clinical Lecturer

PhD in 2010 on "*Excessive Fluid Overload Among Haemodialysis Patients : Prevalence, Individual Characteristics and Self-regulation of Fluid Intake*" at the University of Uppsala.

Research area: Nephrology

Keywords: Haemodialysis, Renal nursing, Self-efficacy, Self-care, Patient adherence, Questionnaires, Psychometrics, Patient safety, Quality of care, Behavioural medicine

Scientific articles:

Ludvigsen MS, Hermansen HM, Lindberg M. The quality of nursing care during intradialytic fluid removal in haemodialysis: time to change practice? J Clin Nurs. (Epub nov 2014)

Participation in national and international conferences:

43RD EDTNA/ERCA International Conference, oral presentation: Haemodialysis ultrafiltration rate: impact for the multidisciplinary team of focused communication on patient-centered care.

Tomas Weitoft

Consultant, Research supervisor

PhD in 2005 on "*Intra-articular Glucocorticoid Treatment: Efficacy and Side Effects*" at the University of Uppsala.

Research area: Rheumatological treatment

Keywords: arthritis, intra-articular glucocorticoid, triamcinolone hexacetonide, arthrocentesis, bone metabolism, cartilage, cortisol, ACTH, joint infection

Scientific articles:

Weitoft T, Rönnelid J, Knight A, Lysholm J, Saxne T, Larsson A. Outcome predictors of intra-articular glucocorticoid treatment for knee synovitis in patients with rheumatoid arthritis - a prospective cohort study. *Arthritis Res Ther.* 2014;3:R129.

Book chapters:

Ledpunktioner (Vårdhandboken)

Participation in national and international conferences:

European rheumatology congress in Paris (listener)

Scandinavian Rheumatology Congress in Stockholm (poster)

Lars Wesslén

Consultant

PhD in 2001 on "*Sudden Cardiac Death in Swedish Orienteers*" at the University of Uppsala.

Research area: Infections and sports.

Keywords: bartonella, cricetinae, risk factors

Marianne Lannsjö

Consultant

PhD in 2012 on "*Mild Traumatic Brain Injury – studies on outcome and prognostic factors*" at the University of Uppsala.

Research area: Rehabilitation medicine

Keywords: Rehabilitation, Mild Traumatic Brain Injury, Rivermead Post-concussion Symptoms Questionnaire, Rasch-analysis, prediction, outcome, head CT pathology, Magnet Resonance Imaging

Scientific articles:

Godbolt AK, Stenberg M, Lindgren M, Ulfarsson T, Lannsjö M, Stålnacke BM, Borg J, DeBoussard CN Associations Between Care Pathways and Outcome 1 Year After Severe Traumatic Brain Injury. *J Head Trauma Rehabil.* (Epub juni 2014)

Sunnerhagen KS, Flansbjer UB, Lannsjö M, Tölli A, Lundgren-Nilsson A. WebRehab: A Swedish database for quality control in rehabilitation. *J Rehabil Med.* 2014;46:958-962

Participation in national and international conferences:

2014-12-08—14 The Eighth World Congress for Neurorehabilitation, Istanbul (poster)

Maria Lindberg

Nurse / Clinical Lecturer

PhD in 2012 on "*Methicillin-resistant staphylococcus aureus (MRSA) an unclear and untoward issue - patient-professional interactions, experiences, attitudes and responsibility*" at the University of Uppsala.

Research area: Patient safety work focused on the spread of infection.

Keywords: Infection control, multidrug-resistance, psychometrics, patient safety, ESBL, VRI

Scientific articles:

Lindberg M, Carlsson M, Skytt B. MRSA-colonized persons' and healthcare personnel's experiences of patient-professional interactions in and responsibilities for infection prevention in Sweden. *J Infect Public Health*. (Epub juni 2014)

PhD Students

Registered at the University of Uppsala.

Margareta Gonzalez Lindh

Speech Therapist

Institution: Neuroscience/ Speech Therapy, the University of Uppsala.

Doctoral thesis: "Swallowing difficulties in patients with respiratory dysfunction"

Estimated dissertation: 2021

Participation in national and international conferences:

2014-05-06-9. European stroke congress, Nice (poster)

2014-10-17. ÖNH-clinic day, Gävle (oral presentation)

2014-11-20-21. "Dysphagia at COPD" 3, Jönköping

Christian Kampmann

Specialist

Institution for Medical Science, the University of Uppsala.

Doctoral thesis: *The role of the intestinal flora in traveler's diarrhea*

Estimated dissertation: 2020

Participation in national and international conferences:

2014, may. The Swedish Network for Gastrointestinal Infection and Inflammation, Marstrand

GIMIICum graduate School Forum. "The adaptive immunity of the Gastrointestinal tract", Linköping

IMV-seminars at the University of Uppsala.

Andreas Palm

Specialist

Institution for medical Science, the University of Uppsala.

Doctoral thesis: *Effects of obesity on survival, lung function, metabolism and sleep*.

Estimated dissertation: 2018

Participation in national and international conferences:

European Respiratory Society, Wien september 2012.

2014 mars. Swedish lung medical association's annual meeting, Malmö (poster)

2014 sept. European Respiratory Society, Munchen (oral presentation)

Registered at the Karolinska Institute.

Amanda Häggblom

Resident physician

Institution: Medicin, Huddinge

Doctoral thesis: *Antiviral drug resistance and treatment outcome of HIV-1 infection*

Estimated dissertation: 2016

Participation in national and international conferences:

Nordic HIV-conference, (poster)

15th International Workshop on HIV Observational Workshops (IWHOD), (poster)

Scientific articles:

Neogi U, Häggblom A, Santacatterina M, Bratt G, Gisslén M, Albert J, Sonnerborg A

Temporal Trends in the Swedish HIV-1 Epidemic: Increase in Non-B Subtypes and Recombinant Forms over Three Decades. PLoS One. 2014 Jun 12;9(6)

Kristina Nordstrand Vroland

Occupational Therapist

Institution for Women's and children's health, the Karolinska Institute

Doctoral thesis: *Goal setting and skills achievement in children with disabilities*

Estimated dissertation: 2014

Participation in national and international conferences:

WFOT, Japan (oral presentation)

Peter Magnusson

Cardiologist

Institution for Medicin, the Karolinska Institute

Doctoral thesis: *ICD therapy in patients with hypertrophic cardiomyopathy.*

Estimated dissertation: 2020

Registered at the University of Linköping.

Karin Myrberg

Speech Therapist

Institution: IKE, the Health University of Linköping.

Doctoral thesis: "Interaction Patterns in aphasia and dementia - conversation analysis as a basis for logopedic interventions "

Estimated dissertation: 2021

Participation in national and international conferences:

2014-05-06-9. European stroke congress, Nice (poster)

2014-10-17. ÖNH-clinic day , Gävle (oral presentation)

2014-11-20-21. "Dysphagia in COL" 3, Jönköping

Registered at Sahlgrenska Academy.

Adam Helles

Psychologist

Institution: Neuroscience and physiology, the University of Göteborg.

Doctoral thesis: *A follow up study of young adults diagnosed with Aspergers syndrome in childhood*

Estimated dissertation: 2019

Scientific articles:

Helles A, Gillberg CI Gillberg C, Billstedt E. Asperger syndrome in males over two decades: stability and predictors of diagnosis. *J Child Psychol Psychiatry*.(Epub okt 2015)

Hadjikhani N, Zürcher NR, Rogier O, Hippolyte L, Lemonnier E, Ruest T, Ward N, Lassalle A, Gillberg N, Billstedt E, Helles A, Gillberg C, Solomon P, Prkachin KM, Gillberg C. Emotional contagion for pain is intact in autism spectrum disorders. *Transl Psychiatry*. 2014 Jan 14;4:e343

Participation in national and international conferences:

2014-04-02—4. "Neuropsychology of autism - the long-term follow-up of children and adults ", Stockholm (oral presentation).

Long-Term Follow-up - forecast in autism, (oral presentation)

Division operation

Researchers

Bengt Andraé

Physician gynecology

Development and implementation of a model for Routine National Audit of Cervical Cancer Prevention

Research Area: Cervical cancer

Keywords: Cervical cancer screening. Audits. Adenocarcinoma

Agencies that support work/Funding 2014:

Karolinska Institute 243766 kr

Participation in national and international conferences:

2014 May National HPV meeting in Umeå. (oral presentation)

2014 April. Kolposkopisk International Congress, London. (oral presentation)

2014 August. International HPV Congress, Seattle. (oral presentation)

Participant in SKL group of experts on new national procurement of HPV vaccine

Participant in the National Board of experts for the introduction of HPV in primary screening for cervical cancer

Hashem Amini

Physician gynecology

PhD in 2010 on "Fetal Anomalies - Surveillance and Diagnostic Accuracy of Ultrasound and Magnetic Resonance Imaging" at the University in Uppsala.

Research area: Obstetrics and Gynecology

Keywords: Fetal Anomalies, Fetal MRI, Ultrasound, fetal autopsy

Peter Smith

Physician gynecology

PhD in 1993 on "*Estrogens and the urogenital tract : studies on steroid hormone receptors and a clinical study on a new estradiol-releasing vaginal ring*" at the University of Uppsala.

Research area: Obstetrics and Gynecology

Keywords: hysterctomi, analgesia, pain

Participation in national and international conferences:

2014-06-10--12. NFOG, Nordic Congress of Obstetrics and Gynecology, Stockholm.

2014 augusti. SFOG, Swedish Society of Obstetrics and Gynecology, Varberg (poster).

Henning Thejls

Physician gynecology

PhD in 1995 on "*Silent chlamydia infections: aspects of diagnosis and considerations concerning treatment*" at the University of Uppsala.

Research area: Gynecology

Keywords: CRP, sectio, infection

Maria Palm

Specialist Gynaecology

PhD in 2012 on "*Oxidative Stress, Angiogenesis and Inflammation in Normal Pregnancy and Postpartum*" at the University of Uppsala.

Research area: Obstetrics and Gynecology

Keywords: Angiogenesis, inflammation, IL-6, F2-isoprostanes, oxidative stress, Pentraxin 3, PGF2 α , PlGF, pregnancy, sFlt1, TNF- α , VEGF-A

Participation in national and international conferences:

2014 augusti. SFOG, Swedish Society of Obstetrics and Gynecology, Varberg

Michael Bergqvist

Consultant, professor

PhD in 2002 on "*Radiosensitivity in lung cancer with focus on p53*" at the University of Uppsala.

Research area: Cancer

Keywords: NSCLC, brain tumours, chemotherapy, predictive, prognostic, survival

Scientific articles:

Sooman L, Freyhult E, Jaiswal A, Navani S, Edqvist PH, Pontén F, Tchougounova E, Smits A, Elsir T, Gullbo J, Lennartsson J, Bergqvist M, Ekman S. FGF2 as a potential prognostic biomarker for proneural glioma patients. *Acta Oncol.* (Epub sept 2014)

Libard S, Popova SN, Amini RM, Kärjä V, Pietiläinen T, Hämäläinen KM, Sundström C, Hesselager G, Bergqvist M, Ekman S, Zetterling M, Smits A, Nilsson P, Pfeifer S, de Ståhl TD, Enblad G, Ponten F, Alafuzoff I. Human Cytomegalovirus Tegument Protein pp65 Is Detected in All Intra- and Extra-Axial Brain Tumours Independent of the Tumour Type or Grade. *PLoS One.* (Epub sept 2014)

Sooman L, Ekman S, Tsakonas G, Jaiswal A, Navani S, Edqvist PH, Pontén F, Bergström S, Johansson M, Wu X, Blomquist E, Bergqvist M, Gullbo J, Lennartsson J. PTPN6 expression is epigenetically regulated and influences survival and response to chemotherapy in high-grade gliomas. *Tumour Biol.* 2014;3:4479-88

Elsir T, Edqvist PH, Carlson J, Ribom D, Bergqvist M, Ekman S, Popova SN, Alafuzoff I, Ponten F, Nistér M, Smits A. A study of embryonic stem cell-related proteins in human astrocytomas: identification of Nanog as a predictor of survival. *Int J Cancer.* 2014;134:1123-31

Popova SN, Bergqvist M, Dimberg A, Edqvist PH, Ekman S, Hesselager G, Ponten F, Smits A, Sooman L, Alafuzoff I. Subtyping of gliomas of various WHO grades by the application of immunohistochemistry. *Histopathology.* 2014;64:365-79

Sherwood V, Chaurasiya SK, Ekström EJ, Guilmain W, Liu Q, Koeck T, Brown K, Hansson K, Agnarsdóttir M, Bergqvist M, Jirstrom K, Ponten F, James P, Andersson T. WNT5A-mediated β -catenin-independent signalling is a novel regulator of cancer cell metabolism. *Carcinogenesis.* 2014;35:784-94

Reizenstein JA, Holmberg L, Bergqvist M, Linder A, Ekman S, Löden B, Holmqvist M, Hellström K, von Beckerath M, Blomquist E, Bergström SN. Time trends in T3 to T4 laryngeal cancer: A population-based long-term analysis. *Head Neck.* (Epub oct 2014)

Pölajeva J, Bergström T, Edqvist PH, Lundquist A, Sjösten A, Nilsson G, Smits A, Bergqvist M, Pontén F, Westermark B, Pejler G, Forsberg Nilsson K, Tchougounova E. Glioma-derived macrophage migration inhibitory factor (MIF) promotes mast cell recruitment in a STAT5-dependent manner. *Mol Oncol.* 2014;8:50-8.

Participation in national and international conferences:

2014, October. IMIG. International Mesothelioma conference, Cape Town South Africa (poster)

Stefan Bergström

Consultant, associate Professor

PhD in 1989 on "*On mast-cell-mediated mitogenesis in rat mesenteric windows. Influence of long-standing streptozotín-diabetes and related features such as age and hyperplasia*" vid Göteborgs universitet.

Research area: Cancer

Keywords: cancer, CT, PET, larynx, oesophagus, prostat

Agencies that support work/Funding 2014:

Gävle Cancerfond 100000 kr

Gävle Cancerfond 179680 kr

Gävle Cancerfond 100000kr

Scientific articles:

Reizenstein JA, Holmberg L, Bergqvist M, Linder A, Ekman S, Löden B, Holmqvist M, Hellström K, von Beckerath M, Blomquist E, Bergström SN. Time trends in T3 to T4 laryngeal cancer: A population-based long-term analysis. *Head Neck*. 2014;36:1727-31.

Sooman L, Ekman S, Tsakonas G, Jaiswal A, Navani S, Edqvist PH, Pontén F, Bergström S, Johansson M, Wu X, Blomquist E, Bergqvist M, Gullbo J, Lennartsson J. PTPN6 expression is epigenetically regulated and influences survival and response to chemotherapy in high-grade gliomas. *Tumour Biol*. 2014;35:4479-88.

Widman A, Bergström S. Driving for patients in palliative care-a reality? *Springerplus*. 2014;3:79

Widman A, Bergström S. Bilkörning bland patienter inskriva för palliativ vård. *Onkologi i Sverige*. 2014;6:46-51.

Participation in national and international conferences:

2014, October. IMIG. International Mesothelioma Conference, Cape Town South Africa (poster)

Khatereh Djavani Gidlund

Consultant

PhD in 2011 on "*Colonic ischemia and intra-abdominal hypertension after operation for abdominal aorticaneurysm*" vid Uppsala universitet.

Research area: Aortaaneurysm

Keywords: abdominal aneurysm, intra-abdominal hypertension, abdominal compartment syndrome, colonic ischaemia, colonic hypotension, intra-abdominal pressure, rupture abdominal aortic aneurysm

Participation in national and international conferences:

2014. Surgeon Week, Karlstad

2014, April. Charing Cross, London

Johan Hansson

Consultant

PhD in 2009 on "*Loco-regional Treatment of Peritoneal Carcinomatosis: Survival, Morbidity and Quality of Life*" at the University of Uppsala.

Research area: peritoneal Cancer

Keywords :Peritoneal carcinomatosis, cytoreductive surgery, intraperitoneal chemotherapy

Mary Hägg

Dentist

PhD in 2007 on "*Sensorimotor Brain Plasticity in Stroke Patients with Dysphagia. A Methodological Study on Investigation and Treatment*" at the University of Uppsala.

Research area: Stroke

Keywords: Brain plasticity, dysphagia, facial palsy, lip force

Scientific articles:

Hägg M, Tibbling L. Four-quadrant facial function in dysphagic patients after stroke and in healthy controls. *Neurol Res Int.* 2014;2014:672685.

Participation in national and international conferences:

2014-02-4-5. Future nutrition of elderly - Recent research and new findings, Stockholm (oral presentation)

2014-09-17. Oral motor impact on the oral health of people with special needs (oral presentation)

2014, october. ÖNH Region day (oral presentation)

2014-10-24-25. 4th ESSD Congress Dysphagia Across Ages, Brussel. (oral presentation)

Lars Karlsson

Consultant

PhD in 2009 on "*The role of Chlamydomydia pneumoniae in the inflammatory response and expansion of abdominal aortic aneurysms*" at the University of Uppsala.

Research area: aortic Aneurysm

Keywords: Abdominal aortic Aneurysm, Chlamydomydia pneumoniae, expansion, inflammation_

Gösta Ullmark

Consultant, associate Professor

PhD in 2001 on "*Morcelised Impacted Cortico-Cancellous Bone Allografts in Revision Surgery for Endoprosthetic Loosening with Osteolysis*" at the University of Uppsala.

Research area: Bone metabolism of hip

Keywords: bone metabolism, hip replacement

Agencies that support work/Funding 2014:

Skobranschens utveckling 200000 kr

Scientific articles:

Ullmark G. Femoral head fractures: hemiarthroplasty or total hip arthroplasty? *Hip Int.* 2014 Oct 2;24 Suppl 10:e12-4

Participation in national and international conferences:

American Association of Orthopedic Surgeon Congress 11-15 Mars in New Orleans.

Prosthesis Revision Course April 2 to 4 Skåvsjöholm: Lecturer (teacher)

Invited lecturer on hip replacement revision at the Landshut hospital (Germany)

Invited lecturer to The Latvian Hip and Knee Joint Replacement Society Congress 30/5, Riga, Latvia

Participated in International Hip Symposium. Rome, 17th-20th of September 2014

Invited lecturer on "Jubilee Conference Orthopaedics University of Basel", Switzerland - September 24th and 25th, 2014

Invited lecturer and moderator. 23rd Annual Congress of the European Association of Tissue Banks Lund, 1-3 October 2014

15th EFORT Congress in London, 4-6 Juni: Arranged 6 symposiums with 21 speakers. Lectured at three symposiums and was moderator at three.

Audience at Swedish Orthopaedic Association Annual Congress Helsingborg August 26 to 29

Organized an international congress: "European Hip Society 11th International Congress Stockholm" Oct. 9-11. 850 participants from 54 countries, 18 symposia and 250 free lectures. Lecturer in 3 symposiums and moderator at two.

7/11 Participated at the Swedish Hip and knee registry Meeting. Arlanda.

November 10 to 13. Invited lecturer. Société Française de Chirurgie Orthopédique et Traumatologique (SOFECOT).

TOTBID, Turkish National Congress of Orthopaedics and Traumatology, Antalya 12-16 Nov Invited lecturer at two symposia.

Chinese Orthopedic Association & World Orthopedic Association 2014 Congress 19-23 Nov Peking: Invited lecturer in 3 symposiums and moderator at one.

Invited lecturer at "Revision, international symposium" 26-28/11 Berlin

Invited to the Egyptian Orthopedic Association congress 2013, Dec 15-18 Kairo: Invited lecturer at one symposia.

Invited to speak at the "10th Central European Orthopaedic Congress 8th to 11th May, 2014, Split, Croatia"

Henrik Wallander

Consultant

PhD in 2009 on "*Congenital clubfoot. Aspects on epidemiology, residual deformity and patient reported outcome*" at the University of Uppsala.

Research area: congenital clubfoot

Keywords: Congenital clubfoot, incidence, ultrasound, residual deformity, quality of life

Participation in national and international conferences:

2014-08-24. Swedish Orthopaedic Association annual meeting. Symposium on "Ponseti - the man and the method", Helsingborg (moderator and participant)

PhD Students

Registered at the University of Uppsala.

Zackarias Bekhali (tid Abdulla)

Physician

Institution: surgical Sciences

Doctoral thesis: *Duodenal switch (DS) for superobesity – changes in physiology and clinical results*

Estimated dissertation: 2018

Saraj Abolghasem

Physician

Institution: Institution for Surgical Sciences

Doctoral thesis: *Complications and survival / cancer recurrence after resection of the rectum for rectal cancer.*

Estimated dissertation: 2022

Catrine Björn

Surgical Nurse

Institution: Institutionen för folkhälso- och vårdvetenskap

Doctoral thesis: To identify and promote attractive healthcare workplaces

Estimated dissertation: 2015

Samuel Ersryd

Physician

Institution: surgical Sciences

Doctoral thesis: *Open repair of abdominal aortic aneurysm in the endovascular era. With special emphasis on abdominal compartment and hypoperfusion syndromes.*

Estimated dissertation: 2020

Per Fessé

Nurse

Institution: Oncology, Radiology and Clinical Immunology

Doctoral thesis: *Description of early/acute and late skin reaction (toxicity) after radiotherapy*

Estimated dissertation: 2015

Petter Frühling

Physician

Institution: Department of Surgical Sciences

Doctoral thesis: *Behandlingsalternativ av kolorektal cancer med spridning till levern*

Estimated dissertation: 2018

Kim Gunnarsson

Physician

Institution: Surgical Sciences

Doctoral thesis: *Modern behandling av rupturerat aortaaneurysm*

Estimated dissertation: 2019

Georg Holgersson

Physician

Institution: Department of Radiology, Oncology and Radiation Science

Doctoral thesis: *New clinical predictive factors for response in patients with non-small cell lung cancer (NSCLC)*

Estimated dissertation: 2017

Amal Abu Sabaa

Physician

Institution: Department of Radiology, Oncology and Radiation Science

Doctoral thesis: *Clinical and tumorbiology study of diffuse large B-cell lymphoma*

Estimated dissertation: 2022

Torbjörn Sakari

Physician
Institution: Surgical Sciences
Doctoral thesis: *Ileus*
Estimated dissertation: 2021

Camilla Sandberg Melin

Physician
Institution: Neuroscience / Ophthalmology
Doctoral thesis: *Can measurements of papilla trimming etch size and / or nerve fiber layer thickness be used for clinical monitoring of glaucomatous damage?*
Estimated dissertation: 2019

Registered at the Karolinska Institute.

Erik Näslund

Physician
Institution: Physiology and Pharmacology
Doctoral thesis: *Determination of arterial oxygen saturation, with a new non-invasive method.*
Estimated dissertation: 2021

Division Primary Care

Researchers

Kristina Bröms

Family doctor, Research supervisor
PhD in 2010 on “*A Nationwide Study of Asthma and Allergy in Swedish Preschool Children- with Special Reference to Environment, Daycare, Prevalence, Co-occurrence and Incidence*” at the University of Uppsala.
Research area: Asthma and allergy in Preschool children
Keywords: Asthma, rhinit, atopy, children, preschool

Karin Sanner

Specialist
Institution: Institution for Womens and Childrens Health
PhD 2013 on “*Significance of Human Papilloma Virus (HPV) - Analysis for the Detection of Precancerous Cervical Lesions – Impact of Self Sampling*”

Research area: Cervix cancer

Keywords: human papilloma viurs, HPV, self sampling, organized screening, cervical cancer screening

Participation in national and international conferences:

2014-01-30. HPV-meeting, Uppsala University's auspices (lecturer)

2014-05-15. National Network for HPV screening in Umeå.

Anders Wimo

Family doctor, professor

PhD in 1992 on "*Dementia care alternatives in the Sundsvall-region, Sweden. Studies on symptoms, costs and quality of life*" at the University of Umeå.

Research area: The elderly and dementia.

Keywords: Dementia, health economics, senior care, elder care, informal care, epidemiology

Scientific article:

Haro JM, Kahle-Wroblewski K, Bruno G, Belger M, Dell'Agnello G, Dodel R, Jones RW, Reed CC, Vellas B, Wimo A, Argimon JM. Analysis of burden in caregivers of people with Alzheimer's disease using self-report and supervision hours. *J Nutr Health Aging*. 2014;18:677-84

Vossius C, Rongve A, Testad I, Wimo A, Aarsland D. The use and costs of formal care in newly diagnosed dementia: a three-year prospective follow-up study. *Am J Geriatr Psychiatry*. 2014;22:381-8

Kihlgren A, Wimo A, Mamhidir AG. Older patients referred by community nurses to emergency departments--a descriptive cross-sectional follow-up study in a Swedish context. *Scand J Caring Sci*. 2014;28:97-103

Sjölund BM, Wimo A, Qiu C, Engström M, von Strauss E. Time trends in prevalence of activities of daily living (ADL) disability and survival: comparing two populations (aged 78+ years) living in a rural area in Sweden. *Arch Gerontol Geriatr*. 2014 May;58:370-5

Reed C, Belger M, Dell'agnello G, Wimo A, Argimon JM, Bruno G, Dodel R, Haro JM, Jones RW, Vellas B. Caregiver Burden in Alzheimer's Disease: Differential Associations in Adult-Child and Spousal Caregivers in the GERAS Observational Study. *Dement Geriatr Cogn Dis Extra*. 2014;4:51-64

Bradley P, Akehurst R, Ballard C, Banerjee S, Blennow K, Bremner J, Broich K, Cummings J, Dening K, Dubois B, Klipper , Leibman C, Mantua V, Molinuevo JL, Morgan S, Muscolo LA, Nicolas F, Pani L, Robinson L, Siviero P, van Dam J, Van Emelen J, Wimo A, Wortmann M, Goh L. Taking stock: A multistakeholder perspective on improving the delivery of care and the development of treatments for Alzheimer's disease. *Alzheimers Dement*. (Epub april 2014)

Wimo A, Ballard C, Brayne C, Gauthier S, Handels R, Jones RW, Jonsson L, Khachaturian AS, Kramberger M. Health economic evaluation of treatments for Alzheimer's disease: impact of new diagnostic criteria. *J Intern Med*. 2014;275:304-16

Skillbäck T, Farahmand B, Bartlett JW, Rosén C, Mattsson N, Nägga K, Kilander L, Religa D, Wimo A, Winblad B, Rosengren L, Schott JM, Blennow K, Eriksdotter M, Zetterberg H. CSF neurofilament light differs in neurodegenerative diseases and predicts severity and survival. *Neurology*. 2014 Nov 18;83:1945-53

Millbourn D, Wimo A, Israelsson LA. Cost analysis of the use of small stitches when closing midline abdominal incisions. *Hernia*. 2014;18:775-80

Participation in national and international conferences:

Wimo A. The role of primary care in the management of dementia – a health economic perspective. Alzheimer's Association International Conference. Primary Care Preconference: A Global View from the Primary Care Perspective. Copenhagen, Denmark Saturday, July 12, 2014 (invited lecturer)

Anders Wimo, Britt-Marie Sjölund, Anders Sköldunger. Cohort effects of dementia prevalence and survival patterns in a rural cohort project (SNAC-N) in Northern Sweden. Alzheimer's Association International Conference. Copenhagen, Denmark , July 12, 2014 (poster)

Britt-Marie Sjölund , Anders Wimo , Chengxuan Qui, Anders Sköldunger, Maria Engström, Eva von Strauss .Time trends in physical and mental functioning comparing two populations aged 78+ years. . Alzheimer's Association International Conference. Copenhagen, Denmark , July 12, 2014 (poster)

Wimo, A. Clinical assessment of dementia and Alzheimer's Disease. Presentation at Alzheimer's disease and metabolic risk factors: updates about prevention, diagnosis and treatment. Abu Dhabi, May, 2014 (invited lecturer)

Wimo A. Pharmacoeconomics of dementia. Presentation at Cenesys 2014, Prague, Nov 21-22, 2014

PhD Students

Registered at the University of Uppsala.

Elisabet Sundgren

District nurse

Institution: Public Health and Caring Sciences

Doctoral thesis: *Health and lifestyles of people with psychosis.*

Estimated dissertation: 2019

Participation at national and international conferences:

Air, the national tobacco Conference (oral presentation)

Registered at the Karolinska Institute

Annika Öst-Nilsson

Occupational Therapist

Institution: Neurology, Care Sciences and Society. Division of Occupational Therapy.

Doctoral thesis: *Person-centered rehabilitation for return to work after stroke.*

Estimated dissertation: 2019.

Management and Operational Support – LOV

PhD Students

Johanna Sulku

Clinical pharmacists

Institution: pharmaceutical Biosciences

Doctoral thesis: *Mapping and optimization of drug treatment in COPD*

Estimated dissertation: 2020

Alexandra Thornadtsson

Intern

Institution: Medical sciences

Doctoral thesis: *Clinical benefit of alveolar nitric oxide in the diagnosis and treatment*

Estimated dissertation: 2021

Scientific articles:

Högman M, Thornadtsson A, Hedenstierna G, Meriläinen P. A practical approach to the theoretical models to calculate NO parameters of the respiratory system. *J Breath Res.* **2014** Mar;8(1):016002.

Dissertation

Registered at the University of Uppsala.

Eva Sving

Doctoral thesis: Pressure Ulcer Prevention – Performance and Implementation in Hospital Settings

Dissertation: 2014-11-28

Keywords Pressure ulcer prevention, nursing care, implementation

CFUG and Executive Office

Researchers

Marieann Högman

Head of the Center for Research and Development, professor

PhD in 1994 on “*Bronchial reactivity in rabbits and humans. Modulation with nitric oxide and hypertonic saline*” at the University of Uppsala.

Research area: Respiratory physiology and Pathophysiology

Keywords: exhaled biomarkers, nitric oxide, lung function, rhinitis, asthma, lung cancer, COPD

Scientific articles:

Högman M, Thornadtsen A, Hedenstierna G, Meriläinen P. A practical approach to the theoretical models to calculate NO parameters of the respiratory system. *J Breath Res.* 2014 Mar;8(1):016002.

Knudsen K, Pöder U, Högman M, Larsson A, Nilsson U. A nationwide postal questionnaire survey: the presence of airway guidelines in anaesthesia department in Sweden. *BMC Anesthesiol.* 2014;14:25

Knudsen K, Högman M, Larsson A, Nilsson U. The best method to predict easy intubation: a quasi-experimental pilot study. *J Perianesth Nurs.* 2014;29:292-7

Sving E, Högman M, Mamhidir AG, Gunningberg L. Getting evidence-based pressure ulcer prevention into practice: a multi-faceted unit-tailored intervention in a hospital setting. *Int Wound J.* (Epub juli 2014)

Lehtimäki L, Cristescu SM, Van Muylem A, Högman M, Dinh-Xuan AT. How to assess alveolar nitric oxide: a quest of the grail?. *Chest.* 2014 Dec;146(6):e234-5.

Participation in national and international conferences:

Breath summit in Parma, Italy (2 posters and one oral presentation)

European Respiratory Society meeting in Vienna, Austria (poster)

Lennart Fredriksson

Research supervisor

PhD in 2003 on "*The caring conversation*" at the Academy of Åbo, Finland.

Research area: Health and living habits of the mentally disabled, conversation and communication.

Keywords: Health, Schizophrenia, Psychosis, living habits, conversations, communication.

Books/ chapters:

Fredriksson, L. (2014). *Teoribegreppet i hermeneutik och vårdande praxis*. I: Lassenius, E. & Severinsson, E. (red) *Hermeneutik i vårdpraxis. Det nära, det flykitga, det dolda*. Malmö: Gleerups

Fredriksson, L. (2014). *Vårdande kommunikation – samtal om hälsa, lidande och vårdande*. I: Wiklund Gustin, L. (red) *Vårdande vid psykisk ohälsa - på avancerad nivå*. Lund: Studentlitteratur

Participation in national and international conferences:

Gonzalez Lindh, M., Koyi, H. & Fredriksson, L. Evaluating and managing aspiration risk in patients with chronic obstructive pulmonary disease and stroke. *European Stroke Conference, Nice, maj 2014*

Per Liv

Statistician

PhD in 2012 on "*Some properties of measures of disagreement and disorder in paired ordinal data*" at the University of Örebro.

Research area: medical statistics

Keywords: variance components, random effects model, precision, bias, sample size, sample allocation, calibration, bootstrapping

Dag Rissén

Research supervisor

PhD in 2006 on “*Repetitive and monotonous work among women: Psychophysiological and subjective stress reactions, muscle activity and neck and shoulder pain*” at the University of Stockholm.

Research area: Work, stress and musculoskeletal disorders.

Keywords: musculoskeletal disorders, psychosocial stress, workenvironment

Books/chapters:

Rissén, D (2014). "Psykosocial arbetsmiljö och ohälsa – ett biopsykosocialt stressperspektiv". I Ahmadi, F. & Larsson, S. (red.) Hälsa, livsmiljö och arbetsliv: ur ett socialt arbete-perspektiv. Gävle: Gävle University Press

Participation in national and international conferences:

Audience at the scientific meeting: "Self-mutilation - Understand and respond to a complex problem," March 12, 2014, the Center for Psychiatric Research, Stockholm. The meeting was the annual scientific meeting organized by the Swedish association for behavioral medicine.

Community Medicine

Researcher

Katarina Wijk

Head of the Department of Community Medicine, associate Professor

PhD in 2003 on “*Planning and Implementing Health Interventions -: Extrapolating Theories of Health Education and Constructed Determinants of Risk-Taking*” at the University of Uppsala.

Research area: Intervention Theories, Changing Processes, Occupational Health Sciences

Keywords: Pedagogy

Participation in national and international conferences:

The 7th European Public Health Conference (EUPHA), Glasgow November 19-22 2014

Scientific articles:

Hiswåhls A-S, Ghilagaber G, Walander A, Wijk K, Öberg P, Soares JFF, Macassa M. Employment Status and Inequalities in Self-Reported Health. *Epidemiology, Biostatistics and Public Health*, 2014;4:1-11

Hiswåhls A-S, Ghilagaber G, Wijk K, Öberg P, Soares J, Macassa G. Inequalities and Suicide Ideation during Recession Times. *European Journal of Public Health*, 2014; 24 (suppl 2).

Specialist Dental Care, Gävle

Researchers

Ingalill Feldmann

Consultant dentist

PhD in 2007 on “*Orthodontic anchorage – Evidence-based evaluation of anchorage capacity and patients’ perceptions*” at the Faculty of Odontology, Malmö University.

Research area: orthodontics

Keywords: orthodontic, anchorage, pain and discomfort

Scientific articles:

Feldmann I. Satisfaction with orthodontic treatment outcome. Angle Orthod. (Epub jan 2014)

Books/chapter:

Feldmann I, Bondemark L, The significance of anchorage in orthodontics. In: Papadopoulos MA (editor). Skeletal Anchorage in Orthodontic Treatment of Class II Malocclusion - Contemporary appliances of orthodontic implants, miniscrew implants and miniplates. Mosby 2014 p 22-29

Participation in national and international conferences:

Audience at Swedish Orthodontic Society Annual Meeting, Ystad.

Mats Hallman

Consultant dentist, associate Professor

PhD in 2002 on "*On Healing of Titanium Implants in Xenografts*" at the University of Umeå.

Research area: Experimental and Clinical research in biomaterials .

Keywords: orthodontic

Participation in national and international conferences:

EAO Italy sept 2014 (poster)

Anders Holmlund

Consultant dentist

PhD in 2008 on "*Oral inflammation and cardiovascular disease*" at the University of Uppsala.

Research area: Oral inflammation and the relationship between oral health and general diseases with emphasis on heart disease

Keywords: immune response, cardiovascular disease, dental, infection

Christer Lindgren

Consultant dentist

PhD in 2012 on: "On healing of titanium implants in biphasic calciumphosphate" at the University of Linköping.

Research area: longterm Follow-up of dental implants inserted in the bone replacement material.

Keywords: bone substitution, sinus lift. Bone Ceramic, BioOss

Participation in national and international conferences:

EAO, Congress in Rome, (poster)

Arne Mordenfeld

Consultant dentist

PhD in 2013 on: "*On tissue reactions and resorption of bone substitutes*" at the University of Malmö.

Research area:

Keywords: bone transplantation, bone substitutes, implants

Participation in national and international conferences:

EAO, Congress in Rome, (poster)

PhD Students

Registered at the University of Malmö

Niels Ganzer

Consultant dentist

Institution: University of Malmö, Odontology, Department of Orthodontics

Doctoral thesis: Mini Screws anchoring in the orthodontic treatment - randomized controlled trials of change capacity, cost and patient acceptance.

Estimated dissertation: 2016.

Participation in national and international conferences:

Dental's national conference in Stockholm (listeners)

Registered at the University of Umeå

Catrine Isehed

Consultant dentist

Institution: Molecular periodontology

Doctoral thesis: Regenerative treatment of periimplantat - clinical effects, and microbiological and molecular mechanisms. A randomized clinical trial.

Estimated dissertation: 2021.

Participation in national and international conferences:

Research in periodontology at the National Meeting of dentistry (audients)

Centres and Facilities

Agreement with the University of Uppsala

In May 2001 an agreement was signed between the Uppsala University and Gävleborg County Council, later the Region Gävleborg. The agreement meant that the university established and now finances parts of the activities at the Centre for Clinical Research - Gävleborg (CKF - Gävleborg) placed at the FoU-forum Gävleborg. More information is available at <http://katalog.uu.se/orginfo/?orgId=X178>

The agreement aims to a deeper and long-term cooperation between the scientific field of medicine and pharmacy at Uppsala University and Region Gävleborg. It intends to expand and strengthen clinical research and development in medicine, pharmacy, health sciences and healthcare research. It gives the University a broadened base and the Region access to the University's resources in terms of courses and academic qualifications.

Research and development council

During the year we established a committee for research that promotes Regional development. In the Research and Development Council there are representatives from the Region Gävleborg, the University of Gävle and the Centre for Flexible Learning.

The Research and Development Council, that promotes regional development, had following members during the year:

Chairman, Associate Professor Katarina Wijk,

PhD Annika Almkvist Region Gävleborg.

Professor Sam Larsson, the University of Gävle

Associate Professor Maria Vallström, the Centre for Flexible Learning.

Research and Development Council for Health & Medical Care.

In addition, there is already a Research and Development Council for Health- and Medical Care.

The Research and Development Council, had following members during the year:

Chairman, Associate Professor Katarina Wijk.

Professor Per Hellman, University of Uppsala.

Professor Osten Ljunggren, University of Uppsala.

Professor Johan Hallqvist, University of Uppsala.

Professor Anders Wimo, Region Gävleborg.

Associate professor Mats Hallman, Region Gävleborg.

Associate professor Stefan Bergström, Region Gävleborg.

PhD Tomas Weitoft Region Gävleborg.

PhD Kristina Vroland.

Associate Professor Mia Wadelius.

Regional Research Council (RFR)

Representative of our Region in the Regional Research Council in Uppsala-Örebro region (RFR) was Svante Lönnbark, Regional Director. The Region Research Council's prioritization committee included from Region Gävleborg consultant dentist and odont. dr. Arne Mordenfeld, research supervisor and PhD Dag Rissen, consultant and PhD Khatereh Djavani Gidlund. Chairman for Prioritization Committee was Associate Professor Katarina Wijk.

Since 2013 the administration of RFR is placed at the Gävleborg County Council. The office is located at CFUG. Administrator is Annette Östling. Head of the Center for Research and Development is Katarina Wijk. Chairman for RFR Board is Rickard Simonsson, Regional Director in Örebro.

In addition, cooperation is conducted by the association to several academic institutions in Sweden, among others, by enrolled students.