



Centrum för Klinisk Forskning Västmanland



Annual Report 2014





Tame birds long. Wild ones fly.

Elmer Diktonius

Annual Report 2014

Dear reader!

For many employees at Västmanland County Council, the Swedish word Höjdpunkten, or Highlight in English (with an initial capital letter), is synonymous with the staff restaurant at Västmanland County Hospital, Västerås. After the 28th November 2014, Highlight (preferably still with an initial capital letter) is now synonymous with Research Day. Being a public institution, reaching the age of 15 is usually an event that passes without fanfare, but at some point at the beginning of the year, the ever creative professor Jerzy Leppert thought that the 15th anniversary of the CCR-V should get some attention. And so it did. After an extensive planning process and an incredible effort by everyone, even by graduate students in the final phase of finishing their theses, with guns held to their heads, Research Day turned out just as splendid as it deserved to be. For that, I want to thank all our amazingly loyal and dedicated staff. I would also like to thank our clients, the county management and the medical faculty at Uppsala University, for their support – financially as well as for participating in the day!

Can a year contain more than one Highlight? Or does the word run the risk of being devalued? The answer to the first question is yes and the answer to the second question is no, under certain conditions. The CCR-V's annual cycle always contains a number of great days, i.e. the disputations. Regardless of the number of disputations in a year, the individual disputation is always a Highlight. So, if the word Highlight is reserved for those great occasions, it is entirely appropriate to talk about Highlights in the plural. And the year 2014 has indeed presented us with some great disputations: registered midwife Magdalena Mattebo, whose thesis dealt with adolescents' consumption of pornography and its effects on health, senior consultant Karin Sonnbj with a thesis on psychiatric comorbidity, registered nurse Lena Burström whose thesis involved patient safety in the emergency department, and Emelie Condén whose thesis dealt with type D personality and its associations with ill health, particularly myocardial infarction! To this we can also add child psychologist Sara Lövenhag who, on her way towards her disputation completed a Licentiate degree with a work on adolescent substance abuse. Breadth and cutting edge!

All the highlights of the year are described in more detail further on in this annual review. What is there more to be said about 2014, from a limited CCR-V perspective? Our main tasks: research, education and coaching and the so-called third task, or science outreach, have as usual been carried out with honour.

The three major research fields, cancer (primarily breast and colorectal such), cardiovascular morbidity and psychiatry, dominate the scientific production, but the research at the CCR-V involves more than that. We have a fourth "line of research", or rather a collection of "others". The epithet "others" could possibly be associated with "dumping ground", but that is a misinterpretation. For example, this collection includes Marie-Louise Södersved Källestedt's research on cardiopulmonary resuscitation and especially the impact of training within the field. Over time, this may become its own line of research, although the emphasis is on education, which is now being developed at Kliniskt träningscentrum (the Clinical skills centre), where Marie-Louise has the role of education leader. The unit is located below Lärcentrum (the Centre for internal training), one of the CCR-V's most important local partners.

Another "others" activity with the potential to develop into its own line of research is Eva Nohlert's work on smoking cessation. Eva has, as part of her research, taken an interest in aspects of health economics, which we are all interested in, but where Eva is the only one who has really grappled the issue. Being well read on the subject, she therefore runs the risk of becoming our local guru in the field.

A third "others" activity, which has already developed into a line of research, is that on children with cerebral palsy and their abilities to position themselves and move around. Elisabet Rodby Bousquet, who defended her doctoral thesis in 2012, and whose parent institution, besides the CCR-V, is the department of orthopedics in Lund, has rapidly positioned herself academically. Being involved with several PhD students, one of whom is Katina Pettersson from Västmanland, Elisabet has together with her former main supervisor, Professor Gunnar Hägglund, Lund, shaped a world-leading research front.

Training and mentoring is the researcher's second leg to stand on. At the moment, there are 23 doctoral students. Most of them have main supervisors at the CCR-V and in many cases also co-supervisors. This means we have more than enough work to go around. The PhD students themselves, along with the CCR-V's postdocs, are

involved in the training and mentoring on our two courses, the university course of 7.5 credits; “Scientific Methodology and Evidence-Based Medicine” and the course in Scientific Methodology for resident physicians. This is done with great commitment. Many thanks for that!

The so-called third task, or science outreach, refers to the universities’ mission to communicate new knowledge to the general public. With the help of the County Council’s skilled communicators, we are getting better and better at fulfilling our ambition to write press releases for each new publication, which is fundamental for solving this task. On some occasions, we have also made short information clips on YouTube. Sporadically, we have also participated in external events, for example through libraries. This year presented a particularly good opportunity, when the County Council celebrated its 150th anniversary. During so-called speed presentations, a large number of PhD students and postdocs from the CCR-V gave quick exposés of their research.

The decision to give attention to a press release is entirely up to the journalists. This is done on a large number of occasions, so also in 2014. Personally, I have lost count of articles in the local press, radio and television. Most recently, an article in the International Journal of Neuropsychopharmacology with CCR-V researchers Kent Nilsson and Cecilia Åslund as first and last author respectively, was given attention with a headline on Newsweek, “Genotypes do not confer risk for delinquency but rather alter susceptibility to positive and negative environmental factors: Gene-environment interactions of BDNF Val66Met, 5-HTTLPR, and MAOA-uVNTR”. There may be a risk of devaluation, but this is yet another Highlight!

Statisticians constantly play dual roles, in that they provide service to others while doing their own research. Our full-time statistician Andreas Rosenblad and our faithful consultant John Öhrvik have received reinforcement from Lund in the form of Philippe Wagner. An invaluable addition! Finally, I would like to congratulate Andreas on the newly received title of Associate Professor, and John Öhrvik on his double professorship; during the year he was appointed Professor at the Karolinska Institute and Adjunct Professor at Uppsala University.

With a well-built infrastructure it is possible to perform magic tricks, without infrastructure the rabbit will slip out of the hat. The CCR-V ground forces, the hard-working Maria Dell’Uva Karlsson and Michaela Eriksson, which this year has been reinforced with Maria Pettersson and Mariana Ehn, managed the feat of harvesting four disputations, one licentiate examination and Research Day, in addition to their everyday duties. Amazing!

31/01/2015

Mats Enlund

Head and Director, Associate Professor and Senior Lecturer

Contents

BACKGROUND	1
<i>The CCR-V Board</i>	<i>3</i>
ANNUAL REPORT 2014	4
<i>Annual Planning Meeting 2014</i>	<i>5</i>
<i>Scientific Writing Course, September 2014, La Casa di Botro, Botricello, Italy.....</i>	<i>5</i>
CCR-V'S ROLES.....	6
SCIENTIFIC CONSULTATION – OPEN HOUSE	6
SCIENTIFIC TUTORING.....	6
DOCTORAL ACTIVITIES	6
<i>Half-Time and Licentiate Examinations 2014</i>	<i>7</i>
DOCTORAL DEGREE 2014	8
EDUCATION AND TRAINING	12
SEMINARS AND TUTORIAL ACTIVITIES	12
<i>Doctors' Meetings.....</i>	<i>12</i>
<i>Doctoral Seminars</i>	<i>13</i>
<i>Regular Education for Personnel and PhD Students at the CCR-V</i>	<i>14</i>
<i>Miscellaneous Seminars.....</i>	<i>14</i>
RESEARCH ACTIVITIES	16
SCIENTIFIC PRODUCTION	24
<i>International Peer-Reviewed Journals.....</i>	<i>24</i>
<i>National Peer-Reviewed Journals.....</i>	<i>28</i>
<i>Other Journals</i>	<i>29</i>
LECTURES/POSTERS INTERNATIONAL CONGRESSES.....	30
<i>National Congresses</i>	<i>31</i>
<i>National congresses in other countries</i>	<i>32</i>
<i>Miscellaneous Activities.....</i>	<i>33</i>
RESEARCH GRANTS	36
<i>Doctoral Positions (50%) at the CCR-V</i>	<i>36</i>
<i>Postdocs with Individualized Degrees of Affiliation</i>	<i>37</i>
<i>Research grants 2014 – projects with clinical affiliation</i>	<i>38</i>
<i>Doctoral Research Grants 2014</i>	<i>389</i>
<i>Postdoctoral Research Grants 2014</i>	<i>39</i>
<i>Doctoral positions at CCR-V funded by external sources.....</i>	<i>39</i>
<i>External Research Grants</i>	<i>40</i>
ATTACHMENT 1: OPEN HOUSE	41
ATTACHMENT 2: REGISTERED PHD STUDENTS	44
ATTACHMENT 3: AFFILIATED PROJECTS	67
ATTACHMENT 4: COMPLETED PROJECTS	69
STAFF TELEPHONE LIST	70

Background

Centre for Clinical Research, Västmanland County Council - Uppsala University

Clinical research constitutes a fundamental groundwork for a well-functioning health service. The foremost reason why research and scientifically trained staff are needed for any health service is to allow the smooth implementation of new national or international medical discoveries in everyday medical services. The medical staff of Västmanland County Council must be able to understand and put into practice new explanatory models on the functions of the human body, e.g. from molecular biology and genetics. Furthermore, they must have the competence to critically evaluate new methods for both the diagnosis and treatment of medical conditions. Health services should be evidence-based. This goal cannot be achieved without staff receiving scientific education.

The County Council has a responsibility for clinical research and development work, as prescribed by law (HSL 1982 763; §26b). The aim of the founding of the Centre for Clinical Research Västerås (CCR-V) was to gather competence regarding scientific methodology, biostatistics, epidemiology, and data management in one place and make it easily accessible for all the staff within the County Council. The role of the CCR-V is to offer support and tutoring of research projects in a creative environment.

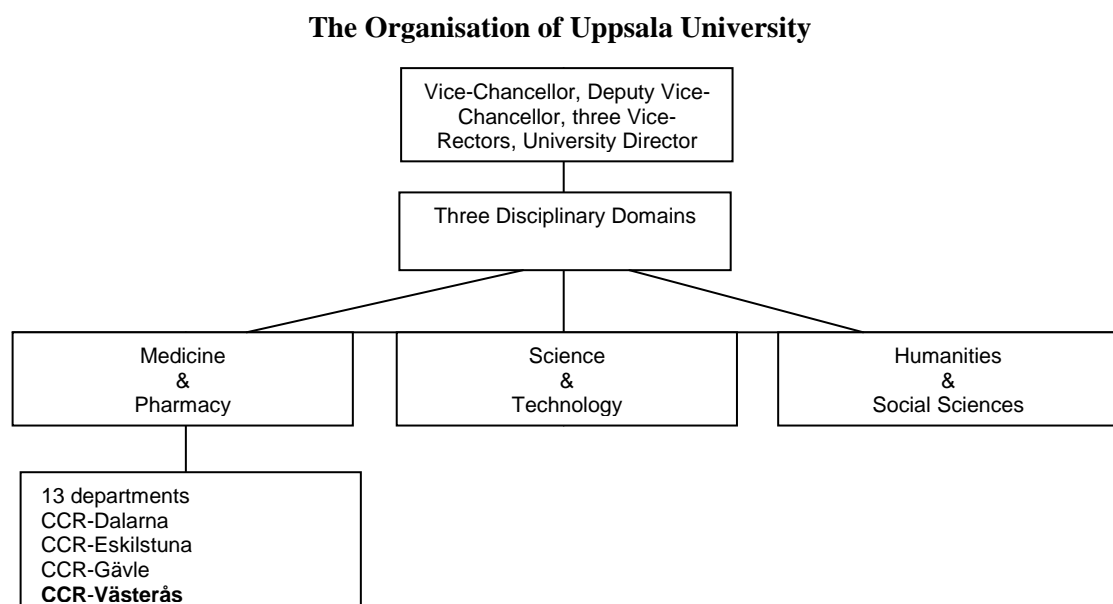
The County Councils' Association together with the Association of Local Authorities have accepted an agreement to work for the implementation of evidence-based knowledge in health services (County Council Executive Board decision, September 2004). Hereby another important role for the CCR-V was created, namely to support staff members in their work with evidence-based medical care. The Centre's target group comprises all employees of the medical service, who are offered the opportunity to conduct or participate in scientific projects within the CCR-V's organisation.

Current organisation

Since 1999, there is a cooperational agreement between Västmanland County Council and Uppsala University which apart from research and training of researchers includes the basic education of medical students. The agreement aims to increase and strengthen research activities within Västmanland County Council. It further intends to improve research and educational facilities by extending the clinical foundations of Uppsala University. The agreement gives us the unique ability to register students at the CCR-V and disputations can take place in Västerås.

The CCR-V is represented on the executive board of the Faculty of Medicine and Pharmacy by its Head and Director, who has been awarded the status of prefect (Fig 1).

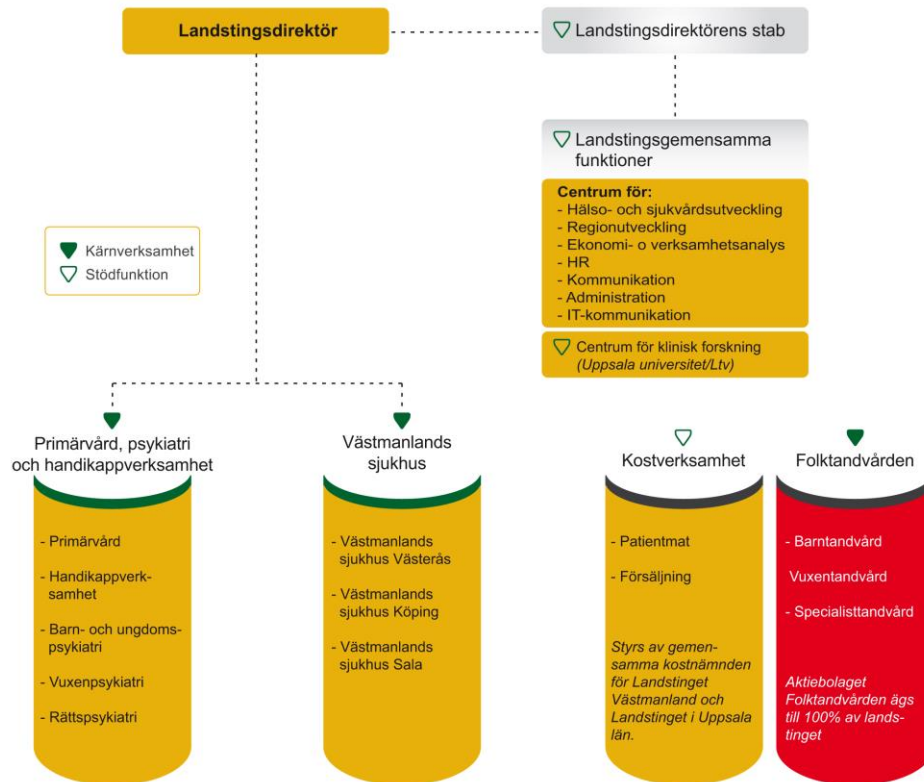
Fig 1. The CCR-V's position within the organisation of Uppsala University



The Organisation of Västmanland County Council

The CCR-V is directly subordinate to the Executive Chief Officer and the Health Care Director (Fig 2).

Fig 2. CCR-V's position within Västmanland County Council



The CCR-V Board

According to the instructions for the establishment of the CCR-V proposed in April 1999 by the Vice-Chancellor of Uppsala University (UVF 1999/688), the Centre is to have a board comprising four individuals. Västmanland County Council elects two representatives and the Faculty of Medicine in Uppsala elects another two. The board's role is to support the head of the CCR-V. The instructions were revised in 2011. According to the new instructions Västmanland County Council elects three representatives. Thus, the Board now contains five persons.

Director of the CCR-V was Associate Professor Mats Enlund. Assistant Director of the CCR-V was Professor Håkan Ahlström, Head of the Department of Radiology, Oncology and Clinical Immunology of the Faculty of Medicine.

Board positions were appointed to Associate Professors Elisabet Granstam and Egil Henriksen and Professor Kennet Smedh, as representatives of Västmanland County Council and Professor Frank Arnold Flachskampf, Institute of Medical Sciences, cardiology, and Professor Elisabeth Ståhle, Institute of Surgical Sciences, thoracic surgery, as representatives of Uppsala University. In addition to the five board members defined by the founding instructions, the following were given the right of attendance only: the Administrative Director of the Faculty of Medicine, Uppsala University, the county councillor with responsibility for research, the County Council Executive Chief Officer, the Health Care Director, the heads of the two ward units, the student representative and the Assistant Head of the CCR-V. The present representation of the Board is shown in Figure 3.

Fig 3. The CCR-V Board

Centre for Clinical Research

Uppsala University - Västmanland County Council

Director

Mats Enlund

Assistant Director

Håkan Ahlström

CCR-V Board

Uppsala University

Frank Arnold Flachskampf, Elisabeth Ståhle

Västmanland County Council

Elisabet Granstam, Egil Henriksen, Kennet Smedh

Right of Attendance

Uppsala University

Administrative Director, Faculty of Medicine and Pharmacy

Västmanland County Council

County Councillor with responsibility for research

Chief Executive Officer, Health Care Director

Heads of Primary Health Care and Västmanland Hospital

Deputy Head of CCR-V

Representative of doctoral students

The CCR-V Board was assembled twice in 2014 (the 21st of March and the 17th of October), during which, representatives of Västmanland County Council and Uppsala University discussed mutual questions of an administrative, economic and scientific nature.

Annual Report 2014

Staff (full- and part-time given as percentages)

- Ass. Prof. Mats Enlund, MD, Head and Director of CCR-V (83 %)
- Ulrika Fagerberg, MD, PhD (50 %)
- Ass. Prof. Monica Löfvander, MD (20 %)
- Prof. Kent Nilsson, sociologist, Deputy Head of CCR-V (100 %)
- Eva Nohlert, DMD, PhD, (75 %)
- Ass. Prof. Andreas Rosenblad, biostatistician (100 %)
- Cecilia Åslund, PhD, behavioural scientist (100 %)
- Annika Kärnsund, RN, research assistant (75 %)
- Philippe Wagner, biostatistician (100 % from 01/02/2014, 50 % från 01/07/2014)
- Tony Wiklund, RN, research assistant (100 %)
- Maria Dell' Uva Karlsson, chief secretary (90 %)
- Mariana Ehn, secretary (100 % from 24/02/2014)
- Michaela Eriksson, secretary (85 %)
- Maria Pettersson, secretary (75 % from 01/03/2014)
- Mattias Rehn, system administrator ,(100 %)

Part-time employees 2014

- Prof. Leif Bergkvist, MD (40 %)
- Ass. Prof. Pär Hedberg, MD (10 %)
- Birgitta Kerstis, RN, research assistant (25 %)
- Johan Knutsson, MD, PhD (20 % until 30/06/2014, 10 % from 01/07/2014)
- Prof. Jerzy Leppert, MD (50 %)
- Prof. Göran Nilsson, MD (20 %)
- Angelica Norling, RN, research assistant (25 %)
- Marja-Leena Ojutkangas, RN, research assistant (80 %)
- Elisabeth Rodby-Bousquet, PhD, reg. fysioterapeut (50 %)
- Marie-Louise Södersved-Källestedt, PhD, RN (15 %)
- Marie-Louise Walker-Engström, PhD, biomedical analyst (20 %)
- Margareta Widarsson, reg. midwife, research assistant (25 %)
- Prof. Magnus von Unge, MD (20 %)
- Prof. John Öhrvik, biostatician (15 %)

Researchers with part-time activity at the CCR-V but contracted by their respective departments:

- Rebecka Addo, research assistant (100 % from 17/11/2014)
- Hanna Frid, reg. dietician, research assistant (50 % until 28/02/2014)
- Viktoria Hallström, RN, research assistant (40 %)
- Rebecka Husdal, project manager (75 % from 01/09/2014)
- Inger Laustiola, reg. dietitian, research assistant (30 % from 24/02/2014, 45 % from 15/09/2014)
- Lena Lindblom, reg. dietitian, research assistant (100 % until 11/09/2014)
- Lena Ludvigsson, research assistant (20 % until 05/09/2014)
- Lotta Nilsson, RN, research assistant (50 %)
- Lisa Söderström, reg. dietitian, research assistant (50 %)
- Prof. Åke Tegelberg, DMD (15 % from 16/08/2014)
- Elin Vesterlund, RN, research assistant (40 %)

External consultation:

- Prof. Bengt Starrin, Dept. of Social Sciences, Karlstad University
- Ann-Christin Johansson, PhD, physiotherapist, Mälardalen University

In the following pages the individual activities will be described in more detail:

Annual Planning Meeting 2014

This year's planning meeting was held at Hem till Gården Hotell & Konferens in Västerås, on the 20th of May 2014.

The day started with group work. Group 1 (supervisors, research assistants, statisticians, secretaries) discussed file structure and data safety at the CCR-V. At present, there is an active work process going on, to change the routines for data safety and data handling. Group 2 (PhD students) discussed the education plan for the PhD program and the new information material developed for new PhD students. Group 3 (postdoctors) discussed how to create an active and inspiring postdoc environment at the CCR-V. It was suggested that we create a forum for postdoctors.

The groupwork was followed by a short presentation of Lean, where Lena Burström and Susanne Olofsdotter shared their experiences. Next, we had group discussions about how we can make the work at the CCR-V more effective. Then the secretary group presented their respective responsibility areas to clarify whom to go to with different requests and problems. Lastly, we had group discussions about success factors in the PhD programme at the CCR-V. The day was completed with an inspirational lecture about job satisfaction and the pleasure of work, held by Annika Johansson.

Scientific Writing Course, September 2014, La Casa di Botro, Botricello, Italy

Twice during their PhD studies, students related to the CCR-V are offered the opportunity to participate in a week-long writing class in Calabria, in Italy. This year's delegation of 17 participants was unusually large and consisted of 7 supervisors, 8 PhD students and 2 course administrators. The PhD students travelled with their supervisors and had the unique opportunity to work with their manuscripts in a warm climate, which as usual was



characterised by openness, scientific rigour and friendliness.

The supervisors began each morning with a lecture on the different building blocks of the manuscript: abstract, background, methods, results, and discussion. After that, the students presented their projects to the group with subsequent discussions about presentation techniques and manuscript structure and content. This year, a statistician was also present, which has been requested at previous trips. Participants gave this new course feature the highest rating.

In addition to lectures, scientific discussions and writing, there were also some activities of a social nature. The evenings ended with unexceptionally nice dinners. There was also enough time for an excursion to the mountain village of Cropani with a stop in Le Castella as well as a visit to the vineyard Russo e Longo.

CCR-V's roles

The CCR-V has the following principal roles :

- Scientific Consultation – Open House
- Scientific Tutoring
- Doctoral Activities
- Research Training
- Seminars and Tutorial Activities
- Research Activities

Scientific Consultation – Open House

One of the most highly valued and nationally acknowledged activities of the CCR-V is the so called *Open House*. All the medical staff of Västmanland County Council can come to the *Open House*, discuss their research ideas, and receive competent help in formulating a project plan. Those projects that are deemed to have a solid potential may be affiliated to the CCR-V and are offered help from a distinct supervisor or contact person, as well as a research assistant responsible for data management. During 2014, 20 Open House consultations were organised (see Attachment 1).

Scientific Tutoring

The following four levels of tutoring and affiliation to the CCR-V have been established:

- Level 1: PhD projects
- Level 2: Projects of high scientific potential that are expected to be published in international scientific journals
- Level 3: Projects that are scientifically newsworthy and are aimed at publication in a non-peer-reviewed journal
- Level 4: Master's theses and similar, for internal reporting only

Current resources at the CCR-V do not allow supervision of students' theses and essays of lower academic value.

Two of the affiliated projects were completed during the year and 17 new projects were accepted (see Attachments 3 and 4). At the end of 2014 there were a total of 47 registered affiliated projects.

Doctoral Activities

PhD student activities include two main parts: direct tutoring and scientific seminars. At the beginning of the year, 19 PhD students were registered at the CCR-V. One PhD student has completed their licentiate examination, four have successfully defended their doctoral dissertations and one PhD student discontinued their doctoral studies.

During 2014, nine PhD students were registered at the CCR-V: *Anders-Petter Carlsson*, DMD, *Philippe Wagner*, biostatistician, *Katina Pettersson*, physiotherapist, *Nils Block*, MD, *Emeli Månsson*, MD, *Christina Carlander*, MD, *Daniel Isacsson*, MD, *Ingvar Sverrisson*, MD, and *Cecilia Ranhem*, MD.

After the new admission of PhD students, the total number at the end of the year was 23 (see Attachment 2).

Half-Time and Licentiate Examinations 2014

Psychologist Sara Lövenhag, Centre for clinical research Västerås, Uppsala University, 16th of May 2014, Västerås: *The use of alcohol and drugs in relation to psychiatric comorbidity and psychosocial stress in Sweden*
ISBN: 978-91-637-5766-2

Examination Board: Ass. Prof. Tomas Lundqvist, Ass. Prof. Eva Billstedt, PhD Ulric Hermansson

Main supervisor: Prof. Kent W Nilsson, CCR-V

At the licentiate examination, the results of three substudies were presented. Substudy I examined the prevalence of substance abuse, psychiatric and psychosocial stress among adolescents who sought treatment for addiction, and how predictors of early adolescence were associated with abuse after five years. Substudy II examined how antisocial behaviours decreased the strength of the association between ADHD and the use of alcohol among adolescents. Substudy III evaluated the reliability of the use of questionnaires, in-depth interviews and chemical hair analyses for detection of drug use among adolescents. The licentiate thesis was approved by the examination board and Sara Lövenhag received her Licentiate of Medicine degree.

Doctoral Degree 2014



Midwife Magdalena Mattebo, Centre för clinical research Västerås, Uppsala University, Västerås, March 28, 2014

Use of pornography and its associations with sexual experiences, lifestyles and health among adolescents.

ISBN:978-91-554-8881-9

Faculty opponent: Prof. Carl-Göran Svedin, Linköping University.

Examination board: Prof. Elisabet Faxelid, Ass. Prof. Helena Åkerud, Ass. Prof. Per Ekstrand

Supervisor: Ass. Prof. Margareta Larsson, the Department of Women's and Children's Health, Uppsala University

Co-supervisors: Ass. Prof. Elisabet Häggström Nordin, the School of Health, Care and Social Welfare, Mälardalen University, Västerås/the Department of Women's and Children's Health, Uppsala, Tanja Tydén, Prof., the Department of Public Health and Caring Sciences, Uppsala

The overall aim of this thesis was to investigate pornography consumption in relation to sexual experiences, lifestyle, health and attitudes to sexuality and pornography among adolescents. Four studies were included in the thesis, a qualitative study (focus group discussions) and three quantitative (prospective cohort study including two data collections) studies.

In study I, staff who work with adolescents daily were interviewed. The participants discussed how messages from pornography influence young people's sexual experiences and relationships. The participants' main message was that young people receive paradoxical messages about sexuality where messages about sexuality in pornography are unequal, with a superior man and a subordinate woman, in contrast to laws and regulations where equal values are emphasized.

In study II and III, 477 boys and 400 girls in the first year of high school (mean age 16.6 years), participated. In study II, 96% of boys stated ever having consumed pornography. Among the boys 10% were categorized as high consumers (consumption every day), 63% average consumers (consumption every week/a few times per month) and 27% low consumers (consumption less often). Among high consumers, sex with friends, alcohol use, peer problems and obesity were reported to a greater extent. High consumers spent 10 hours straight at the computer several times a week to a greater extent than average and low consumers.

In study III, 54% of the girls stated ever having consumed pornography. Among males, 90% said they looked at pornography, in comparison with 30% of the girls. In the group of pornography consumers, boys fantasized about trying sexual acts they have seen in pornography to a greater extent than girls. However, there was no difference with respect to what kind of sexual fantasies boys and girls had or actually having tried sexual acts inspired by pornography.

Almost 70% of the girls had experienced sexual intercourse while the corresponding proportion for boys was 57%, and a higher proportion of girls also had experienced oral sex and twice as many girls compared to boys had experienced anal sex.

In the follow-up study two years later, when the participants were 18 years old, the aim was to analyze the factors of importance for being a high consumer of pornography over time, as well as the significance of pornography consumption in relation to psychosomatic and depressive symptoms at follow-up. The result showed that being a boy, being born outside of Sweden, attending a vocational high school program and stating high consumption at baseline, were significant factors for high consumption of pornography at follow-up. Regarding psychosomatic symptoms, being a girl, living with divorced parents, attending vocational high school programs, and stating high consumption at baseline one was determinants of psychosomatic symptoms at follow-up. Regarding depressive symptoms, being a girl and stating low consumption were important factors at follow-up.

The thesis shows that pornography has become a part of many young people's everyday lives. Midwives work with different aspects of sexual and reproductive health as well as with other health problems among young people. Many midwives meet young people in their daily work and the results can facilitate the understanding of the relationship between pornography consumption and sexual experiences, lifestyle, health and attitudes to sexuality and pornography. Advanced knowledge and understanding can provide a base for discussions with young people.



MD Karin Sonnby, Centre for clinical research Västerås, Uppsala University, Västerås, April 11, 2014

Co-occurring symptoms of attention deficit hyperactivity disorder and depression aspects of sex, aetiology, help-seeking and assessment
ISBN: 978-91-554-8892-5

Faculty opponent: Emeritus Professor Hans Ågren, Göteborg University

Examination board: Ass. Prof. Clara Gumpert, Ass. Prof. Lars Kjellin, Ass. Prof. Tord Ivarsson

Supervisor: Professor Kent Nilsson, CCR-V

Co-supervisor: Ass. Prof. Mia Ramklint, Dept. of neuroscience, psychiatry, Uppsala University

Co-occurring symptoms of ADHD and depression – Sex, aetiology, help-seeking and assessment

The aim of the thesis was to increase knowledge of co-occurring symptoms of ADHD and depression, highlight gender differences, causes, help-seeking and diagnostic assessment.

Study I-III were based on surveys of population representative groups of young people aged 15-16 and 17-18. Study I examined co-occurring symptoms of ADHD and depression as well as links to sexual abuse. Study II examined the relation between a variant of the gene for Transcription Factor Activating Protein -2 β (TFAP-2 β) and co-occurring symptoms of ADHD and depression. Study III examined the link between parents and children and the connection with seeking psychiatric care. Study IV examined psychiatric patients aged 12-17 and compared young people's self-reported ADHD symptoms in a self-report questionnaire compared to ADHD diagnosis received through a clinically structured diagnostic interview.

The studies showed that co-occurring symptoms of ADHD and depression were usual, with a clear majority being girls. About half of all the boys and girls with co-occurring symptoms of ADHD and depression reported experiences of sexual abuse. The results indicate that individuals with co-occurring symptoms of ADHD and depression is a group with multiple risk factors for long-term mental ill health, says PhD student Karin Sonnby at the Centre for clinical research, Västmanland County Council and Uppsala University.

The results also show biological differences related to gender. Girls with symptoms of ADHD and common variants in the gene for TFAP-2 β had more symptoms of depression, which was not the case among boys. Conversely, among girls with symptoms of ADHD, the nine-repeat variant of TFAP-2 β had a protective effect against developing symptoms of depression, which otherwise was very common among girls with symptoms of ADHD. Only 5% of all adolescents with symptoms of ADHD and/or depression sought psychiatric help. Co-occurring symptoms of ADHD and depression was associated with higher probability of seeking help than any psychosocial factor, including signs of secure attachment to parents. Among the help-seeking girls it was more common with co-occurring symptoms of ADHD and depression than just symptoms of ADHD, says Karin Sonnby. The self-assessment forms showed promising properties in terms of a screening instrument for ADHD among adolescents, which makes them suitable for detecting ADHD problems.

Perhaps the most exciting thing about Karin's research project, when considered in the light of other research, is that girls with ADHD exhibit a different symptom profile than boys, which to some extent is linked to biological sex differences. But also that girls are different from boys socioculturally, i.e. the differences in symptoms and behaviours, and that the surrounding world's interpretations and evaluations of girls' symptoms and behaviours are largely dependent on our perceptions of how girls and boys should be. Both sex and gender differences certainly contribute to girls with ADHD getting attention to a lesser extent and receiving less help than boys with ADHD, says Professor Kent Nilsson at the Centre for clinical research.



Reg. nurse Lena Burström, Centre for clinical research Västerås, Uppsala University, Västerås, August 29, 2014

Patient Safety in the Emergency Department: Culture, Waiting, and Outcomes of Efficiency and Quality

ISBN: 978-91-554-8971-7

Faculty opponent: Prof. Eldar Søreide, University of Stavanger, Norway

Examination board: Prof. Eva Johansson, Prof. Marie-Louise Hall-Lord, Prof. Hans Rutberg

Supervisor: Ass. Prof. Mats Enlund, CCR-V

Co-supervisors: Ph.D. Marie-Louise Walker-Engström, Prof. Maaret Carstén

New reception model reduced waiting time in the emergency department

The new approach at the emergency department in Västerås, where a specialist doctor makes the first assessment, has been successful. This is one of the results in a thesis on patient safety in the emergency department by Lena Burström, registered nurse and PhD student.

– I am surprised that the change of reception model in the emergency department had such a positive impact in a short space of time, with much shorter waiting times, fewer patients who returned to the emergency department and fewer deaths, she says.

Lena Burström's thesis deals with the culture in emergency departments, which in many places is characterized by the accumulation of patients, waiting time and weaknesses in patient safety. The focus has been on how different reception models affect the culture and patient safety.

Lena Burström has, among other things, examined the effects of the reception model in the emergency department at Västmanland Hospital Västerås. Before the change, patients were initially assessed by a nurse and were then taken care of by a junior doctor. The new triage model means that a specialist doctor makes the initial assessment and after that the patients are taken care of by a team of nurses and junior doctors.

The result shows that the time between registration and seeing the doctor was shortened by 47 minutes between the years 2008 and 2012, and the total time of the visit to the emergency department was shortened by 34 minutes. At the same time, in 2012 fewer patients left the emergency department before treatment had been completed, fewer returned within 24 and 72 hours respectively and fewer deaths occurred within 7 and 30 days respectively, after the visit.

In a sub-study, Lena Burström compared three emergency departments with different reception models. The result shows that the median time between the patient seeing the doctor and being discharged was 158 minutes for the emergency department with a specialist doctor and a team, compared to 197 for the triage model with a nurse in a first stage and then a junior doctor, and 243 minutes for the model with a nurse in the first stage followed by an emergency doctor.

– My conclusion is that a triage model with a specialist physician with a team is superior to other models in terms of quality and efficiency. It is not just about a specialist physician making the first assessment, the team that takes care of the patient afterwards is equally important, says Lena Burström.

– Waiting in an emergency department is not only emotionally stressful, it also affects the patients medically, in a negative way. Therefore, it is a good thing that we have noted the positive benefits so soon after the new triage model was introduced, says Assistant Professor Mats Enlund, head of the Centre for clinical research.



**Registered Nurse Emelie Condén, Centre for clinical research
Västerås, Uppsala University, Västerås, November 14, 2014**

*Type D Personality: Psychometric Properties of the DS14 and
Associations with Ill Health and Coronary Heart Disease in General
and Clinical Populations*

ISBN: 978-91-554-9052-2

Faculty opponent: Ass. Prof. Aleksander Perski, Stockholm University

Examination board: Prof. Jerker Hetta, Prof. Bruno Hägglöf, Prof. Tiny
Jaarsma

Supervisor: PhD Cecilia Åslund, CCR-V

Co-supervisors: Prof. Jerzy Leppert, Prof. Lisa Ekselius

There is a lack of simple and useful tools to determine personality. Our personality affect our health. Persons with D personality – the joint tendency towards negative affectivity and social inhibition – are at significantly higher risk of becoming ill. But the tools used to determine the personality are not reliable.

That is the conclusion of a thesis presented by Emelie Condén, RN and PhD student at the Centre for Clinical Research, on November 14, in Västerås.

– The questionnaire, DS14, which is used to measure the type D personality, contains only 14 questions. I do not think that is enough to measure personality on a deeper level, says Emelie Condén.

Type D personality was initially developed for the study of personality traits in patients with cardiovascular disease.

Previous research has shown that the proportion of cardiovascular disease in patients with type D personality is 27-31 percent compared to 13-24 percent of the non-cardiovascular population. The method most often used is a simple self-assessment questionnaire, called DS14, which patients fill out.

When Emelie Condén asked 1000 patients suffering from myocardial infarction to answer the DS14 at different times post infarction, the results were contradictory. During hospitalization, the prevalence of Type D personality were 14 percent, after one month 21 percent, and one year after infarction the prevalence was 19 percent. Only 6 percent of patients were classified as Type D personality in all of the three surveys.

– The variation in personality should not to be that large. We are the same personality no matter what happens around us. The DS14 is not appropriate to use on people who are affected by a disease that requires psychological adaption.

Emelie Condén has also investigated the type D personality and its health consequences among young people. The starting point was the County Council's investigation Life and Health young, where adolescents filled in the DS14, among other things.

The result was that 14 percent of the adolescents were considered to have Type D personality, and they were five times more likely to suffer from psychosomatic symptoms, such as anxiety, headaches, sleep problems and pain.

– The result is more consistent with previous research on Type D personality. These results raise the question of whether the Swedish DS14 really is a measure of personality. An alternative explanation for the strong cross-sectional associations observed between the DS14 and psychosomatic symptoms might be that the DS14 functions as a pseudo-measurement of ill health, or co-varies with depressive or psychosomatic characteristics.

At the same time, it is important to find risk individuals not only through biological factors but also on the basis of personality. This is to provide health professionals with deeper knowledge and give them the ability to customize the care and rehabilitation to the needs of different patients.

– For this to be possible, we need to produce reliable and simple tools to assess personality.

Education and Training

The CCR-V arranged the following courses in 2014:

Introduction to Scientific Methodology and Evidence-Based Medicine, 7.5 points

Responsible for the course: Johan Knutsson, PhD

Number of occasions: Wednesdays 13.00-17.00 between January and June 2014

Number of participants: 19

Aim: To give an introduction to scientific methodology and stimulate a scientific working approach in daily healthcare.

Target group: University-educated healthcare professionals.

Learning outcomes: To be able to search, evaluate and interpret information from different databases in order to be able to choose diagnostic and therapeutic methods according to best evidence.

Contents: Medical development based on scientific results. The structure of the scientific article. During seminars read a scientific article and learn to critically analyse it. How to write a scientific article. Study designs in clinical research. How to write a project plan. Personal data in research, regulatory frameworks. Basic statistical methods, including epidemiology. To find, read, interpret, and write scientific reports. Training computer skills for finding evidence-based information on the web. Training computer skills for poster design. Ethics in clinical research, including application procedures to the Regional Ethics Review Board. To develop a project plan with guidance in a small group.

Examination: Written examination, short questions. Written and oral presentation of the produced project plan.

Scientific Methodology and Evidence-Based Medicine – A Course for Registrars

Responsible for the course: Eva Nohlert, PhD

Examiner: Mats Enlund, Ass. Prof.

Number of course days: 6 full days plus supervision 3-5 hours between September 10 and November 26.

Number of participants: 17

Aim: To develop a medical scientific attitude and offer an introduction to clinical research and development.

Target group: Registrars in Västmanland.

Contents: Scientific methodology, study design, evidence-based medicine, literature search, ethical rules and management of personal data in research, basic biostatistics and epidemiology, how to write a project plan and scientific report, article review, own project with the design of a project plan with an oral and written presentation.

Examination: Written and oral presentation of the produced project plan. Opposition of another project plan.

Seminars and Tutorial Activities

Doctors' Meetings

The doctors' meetings, held every first Friday morning of the month (except for July and August), resemble minisymposia with a duration of 45 minutes. The subjects are chosen by the organisers in cooperation with the invited moderators. The aim of the meetings is to reach out to the broad range of doctors working in Västmanland. The number of participants is an estimated 100 individuals per meeting. Members of the programme group for 2014 were: Mats Enlund convener, Jerzy Leppert, Åke Tenerz, Johan Carlander, Camilla Skoglund-Andersson, Margareta Reutervall, Inge Eriksson, Abbas Chabok and Adina Velica.

Programme

Doctor's meetings 2014

January 10 - "KUA – the Clinical Teaching Department – Do we benefit from their activities within the Västmanland healthcare

Moderator: Mats Enlund

Participants: Anna Brännback, KUA and Thomas Eklund, Dept. of Orthopaedics

February 7 - "How important is our choice of diet for disease development"

Moderator: Abbas Chabok

Participant: David Stenholtz, Dept. of Oncology

March 7 - "The National Board of Health and Welfare's guidelines for disease prevention methods and your role as a doctor"

Moderator: Lennart Iselius

Participants: Sevek Engström, Lisa Österberg and Britt-Marie Westholm

May 9 - "Open Comparisons – so what"

Moderator: Lennart Iselius

Participants: Inge Eriksson, Åke Tegelberg and Lena Bixo

June 13 - "Music and health"

Moderator: Jerzy Leppert

Participant: Bengt Starrin

September 5 - "Eating disorders – how does the healthcare work in Västmanland"

Moderator: Adina Velica

Participants: Charlotte Suvero, Child and Adolescent Psychiatry and Jennie Liljehult, Eating Disorder Unit

October 3 - "Probiotics as a treatment option for various conditions"

Moderator: Abbas Chabok

Participants: Ulrika Fagerberg, Children's Clinic and Bengt Jeppsson, Lund University

November 7 - "Clinical research from Västmanland. How can we stimulate increased clinical research?"

Moderator: Abbas Chabok

Participants: Åke Tenerz, Yvette Andersson, Lennart Edmark, Karin Sonnby, Anders Nilsson, Mats Enlund and Liselott Sjökvist

December 5 - "SPUR much?"

Moderator: Camilla Skoglund-Andersson

Participants: Kåre Jansson and Minka Wikström, LIPUS

Doctoral Seminars

PhD student seminars, three to four full-day seminars per term, Fridays 08.30 am to 16.30 pm.

Location: Lärcentrum, entrance no. 40.

PhD student in charge: Lena Burström (spring term) and Susanne Olofsdotter (autumn term).

Doctoral seminars at the CCR-V 2014

During the spring term, analyses and reviewing of individual manuscripts or presentations have been carried out. In addition, one pre-disputation and one pre-licentiate examination were performed.

February 14	Article reviewing and statistics
March 21	Pre-disputation and pre-licentiate examination
May 16	Presentation of different research areas as well as study design and statistics

The topic of the autumn was statistical analysis based on the book *Discovering Statistics Using IBM SPSS Statistics, Fourth Edition*, by Andy Field, SAGE Publications Ltd. Also, two pre-disputations were performed.

August 22	Pre-disputation and quantitative method
September 19	Statistics; bias and non-parametric models
October 24	Statistics; correlation, regression and ANOVA (GLM 1)
October 31	Pre-disputation
December 5	Statistics; ANCOVA, repeated measure and mixed designs (GLM 2-5), MANOVA and logistic regression

Regular Education for Personnel and PhD Students at the CCR-V

Third Tuesday of every month 10.00-11.00am

February 18 **Anu Molarius** "Health status among adults in Västmanland"

March 18 **Magdalena Mattebo** "Pornography use and its associations to sexual experiences, lifestyles and health among adolescents"

April 15 **Hans Giertz** "Killing bugs without drugs – on new findings in nuclear and molecular physics with potential implications for medical science"

August 19 **Lena Burström** "Patient safety in the emergency department"

September 16 **Josefin Näs** "Motivation – how do I change my habits?"

October 7 **Yudi Pawitan** "State of the art in modern statistical methods"

Oktober 28 **Emelie Condén** "Type D personality. Psychometric properties of the DS14 and associations with ill health and coronary heart disease in general and clinical populations"

November 18 **Rong Chen** and **Jonas Ekström** "Research data from Cosmic – is it possible?"

Miscellaneous Seminars

April 11, 2014, 09.30 am -12.00 noon: *What do we know about those currently seeking help from Child and Adolescent Psychiatry?*

Location: Aros Congress Center, Västerås

Lecturer: PhD Mia Ramklint, Dept. of Neuroscience, Psychiatry, Uppsala University, Ass. Prof. Tord Ivarsson, Child and Adolescent Psychiatry, Göteborg University, Ass. Prof. Susanne Bejerot, Dept. of Clinical Neuroscience, Karolinska Institute, PhD Clara Gumpert, Dept. of Clinical Neuroscience, Karolinska Institute

Moderator: Professor Kent Nilsson, CCR-V

Attendance: 100 participants

Target audience: Staff, officials and politicians in psychiatry, primary care, youth counselling, social services and schools

Programme

- *Why do some children and parents seek help from Child and Adolescent Psychiatry while others with equal needs do not?*
- *Children's psychiatric diagnostics*
- *Comorbidity, what does it mean?*
- *Gender differences and predicting behaviour disorders among children and adolescents*
- *Discussion*

August 29, 2014, at 9:30 am -12.00 noon: *Patient safety in the emergency department*

Location: Aula, Västmanland Hospital Västerås

Lecturer: Prof. Hans Rutberg, Linköping University, Prof. Eldar Søreide, Stavanger University, Norway, Prof. Maaret Castrén, Karolinska Institute, Stockholm, Prof. Richard Cook, KTH, Stockholm

Moderator: Ass. Prof. Mats Enlund, CCR-V

Target audience: All health professionals, managers and others interested in patient safety

Attendance: about 170 participants

The seminar dealt with the complexity of patient safety in the healthcare system, with a focus on emergency care and emergency departments.

Professor Hans Rutberg talked about patient safety work and whether it leads to concrete results.

Professor Eldar Søreide, also opponent at the public examination held the same day, talked about patient safety in the acute care.

Professor Maaret Castrén discussed triage as a reception model and whether it is safe for patients.

Professor Richard Cook talked about the complex healthcare systems, with a focus on emergency departments.

The seminar ended with a session of questions and discussions, led by Ass. Prof. Mats Enlund.

November 14, 2014, at 9:15-12:00: *Is there a relationship between psychological factors and cardiovascular disease?*

Location: Aula, Västmanland Hospital Västerås

Lecturer: Professor Jerker Hetta, Department of Clinical Neuroscience, Karolinska Institute, Professor Lisa Ekselius, Department of Neuroscience, Uppsala University, Professor Tiny Jaarsma, Department of Social and Welfare Studies, Linköping University, Associate Professor Aleksander Perski, Stress Research Institute, Stockholm University

Moderator: PhD Cecilia Åslund, CCR-V

Attendance: 50 participants

Target audience: Staff of internal medicine, psychiatry, primary care as well as officials and politicians, other interested parties within the county Västmanland.

The seminar was about the complex interaction of various psychosomatic risk factors for cardiovascular disease such as personality, insomnia and stress. Professor Jerker Hetta talked about sleep and sleep problems – the role sleep plays in good health and the effects of disturbed sleep.

Professor Lisa Ekselius talked about the history of personality theory, from the time of the ancient Greeks to the present. Professor Tiny Jaarsma spoke on the topic *Self-care, depression and personality in heart failure patients: a hopeless combination?* and described the need for support of patients suffering from heart failure.

Finally, the opponent at the public examination that was held later on that day, Aleksander Perski, talked about factors that may stress the heart and how this can affect the patients. The seminar ended with a discussion lead by PhD Cecilia Åslund.

November 28 november, 2014, at 9.00-15.40: *Do we have any practical use of research in the county healthcare? – Experience from 15 years of activity at the Centre for Clinical Research in Västerås, Sweden”*

Location: Aros Congress Center, Västerås

Attendance: 113 participants

Target audience: County council employees in Västmanland, University employees at Uppsala University and all partners of the Center for clinical research Västmanland.

In December of 1999, representatives of Uppsala University inaugurated a new academic unit in the County of Västmanland – the Centre for Clinical Research. This was the first of its kind in the country. Today, after 15 years, we can proudly announce that 43 employees of the Västmanland County Council have defended their doctoral theses at the Center for Clinical Research in Västerås. About 550 scientific papers have been published in international medical journals. This venture to invest in the clinical and public health scientific research, undertaken by the County Council and the University, was found to have a major impact on all health care, not only in the county, but also nationally and internationally.

The day was well-attended by employees from hospitals and health care centres in the County of Västmanland. Uppsala University was represented by the Vice Rector and Dean of the Faculty of medicine, and representatives from the Västmanland County Council included the County Council Director, the County Councillor with responsibility for research and development and acting Hospital Chief together with many heads of departments. Employees of the Centre for clinical research (CCR-V) presented all research areas in a committed and professional manner. The guests who participated in the day were impressed by the breadth and depth of the research conducted by the employees at the CCR-V, and by how well research results were implemented in the health care on local and national levels. The projects that were not presented orally were introduced in a well-visited poster session. Many asked for opportunities to create similar forums for presenting current research in the county of Västmanland, if not annually, at least every two years. In the evening, the anniversary celebrations ended with a traditional party at Västerås castle with the retiring Governor of Västmanland County, Ingemar Skogö, as guest of honor.

Those who worked with the successful arrangement of the 15th anniversary and the party were; Leif Bergkvist, Cecilia Åslund, Kent Nilsson, Elisabet Rodby, Johan Carlander, Abbas Chabok, Mariana Ehn, Maria Dell’ Uva Karlsson, Michaela Eriksson och Jerzy Leppert, Convener.

Research Activities

Study of Atherosclerosis in Västmanland - SAVa

- A study on patients with myocardial infarction and peripheral vascular disease residing in Västmanland.

The single most important cause of premature death is cardiovascular diseases, most of which are conditioned by atherosclerosis disease. Traditionally, extensive research in the area of atherosclerotic manifestations has been performed in Västmanland County Council, e.g. on myocardial infarction, claudication, changes in arterial blood flow in the neck, among others. The study consists of two parts; the first part includes patients with myocardial infarction and the second part those with abnormalities in peripheral blood vessels. In addition, a group of voluntary control individuals is included, matched in age and sex to both study populations. The study is supported by external grants to a great extent, mainly by SparbanksStiftelsen Nya.

The SAVa study features a local management committee consisting of Prof. Jerzy Leppert, convenor, Ass. Prof. Pär Hedberg, Head of Department Anders Hellberg, Ass. Prof. Egil Henriksen, Ass. Prof. Sadettin Karacagil (Istanbul, Turkey), Prof. Göran Nilsson, and Head of Department Åke Tenerz. The external analysis group includes Prof. Anders Hamsten, KI, Prof. Claes-Göran Östenson, KI, Prof. Agneta Siegbahn, UAS, Ass. Prof. Anna Norhammar, KS and Ass. Prof. John Öhrvik, KI as well as members of the local steering committee.

Part 1. Västmanland Myocardial Infarction Survey (VaMIS)

Atherosclerosis in peripheral blood vessels is studied in patients with myocardial infarction in collaboration with the departments of cardiology, physiology and vascular surgery, and the chemical laboratory. In the care of myocardial infarction patients, the earlier focus was mainly on atherosclerosis of coronary arteries, and little attention was directed towards atherosclerosis in other blood vessels. The survey of potentially generalised atherosclerosis is a new and exciting research field of great clinical practical relevance. Most probably, diabetes and its pre-stages are strongly associated with generalised atherosclerosis. For each patient with myocardial infarction, a control individual of the same age, sex and municipality is also examined.

In connection with the SAVa study, other research efforts are especially focussed on the following areas:

- Sex differences in characteristics of patients with myocardial infarction regarding risk factors, quality of life and peripheral atherosclerosis. Women of the general population live longer than men while both sexes have the same survival after myocardial infarction. This discrepancy appears enigmatic and a scientific explanation is desirable.
- Possible differences between the municipalities of Sala, Surahammar and Västerås in frequency and type of myocardial infarctions. These municipalities show significant differences in structure, e.g. a predominance of rural (Sala) versus urban areas (Västerås), which are interesting to assess with respect to myocardial infarction. Associations between myocardial infarction and the socioeconomic situation in different parts of the municipalities, e.g. level of education and median income, are also included in the project plan.

The inclusion of patients with myocardial infarction into the **VaMIS** study was closed in May 2011. During the study period, 1008 patients remained, who represent 69% of all myocardial infarction patients admitted to Västmanland Hospital. Data analysis has been initiated. The study includes 1008 patients with myocardial infarction and 855 sex- and age-matched controls. In 2014, all collected blood samples were transferred to Uppsala biobank at the UCR. Thawing of serum was conducted in order to analyse about 80 cardiovascular biomarkers (Olink Proseek PEA technology). The remaining serum was frozen again, for future analyses. The VaMIS material was included as part of Emelie Condén's doctoral thesis *Type D personality: Psychometric Properties of the DS14 and Associations with Ill Health and Coronary Heart Disease in General and Clinical Populations* 2014. The VaMIS material is also included in Fredrik Calais' doctoral work, in a publication from 2014.

Part 2. Peripheral atherosclerosis in Västmanland (PADVa)

Heart failure is a common disease causing significant costs for society. Systolic left chamber dysfunction (impaired pump function of the left heart chamber) is the most common cause of symptomatic heart failure. Due to the burden that heart failure implies both for the affected individuals and for society, population screening has been suggested, or alternatively screening of high-risk groups, in order to detect and treat individuals with

asymptomatic reduction of left chamber function. Patients with peripheral arterial disease are a potential high-risk population.

The aim of the PADVa study is to assess the prevalence and degree of reduced left chamber function, its association with the extent of arterial disease and its significance for future morbidity and mortality in patients with peripheral arterial disease. Furthermore, the incidence of known and newly diagnosed diabetes and pre-diabetes will be surveyed in these patients. Inclusion of patients was closed in May 2011. The study has included 452 patients with peripheral arterial disease. In 2014, two papers resulted in peer-reviewed publications. Analyses of the prevalence of diabetes and prediabetes, as well as the presence of undertreated blood pressure in the patient group, is ongoing. Similarly, in collaboration with Prof. Agneta Siegbahn, statistical analyses have been started on 80 biomarkers in the blood analysed at the UCR in Uppsala.

Examination of 75-year-old individuals in Västerås

In the year 1997, 1100 individuals born in 1922 were residents of the municipality of Västerås. These individuals all had their 75th birthday during 1997. Of these, 618 were randomly selected and offered an extensive health assessment with special regard to cardiovascular function and morbidity. The invitation was accepted by 223 men and 210 women. This means that 70% of the invited participants participated in the survey.

The examined population is well characterised, as are drop-out individuals. The restriction to one age group results in the disadvantage that results cannot be generalised to other age groups, but has the great advantage that no regard needs be paid to age when analysing different associations. Traditionally, all individuals above 65 years of age have been included in a group termed “elderly”. This may be very misleading and hide numerous important details. Individuals 75 years of age represent a group of survivors who reasonably have other risk factors than middle-aged individuals. Patterns of risk factors can be expected to change more and more quickly with the acceleration of mortality towards the end of life, and survivors are fewer and fewer. A strength of our cohort is its inclusion also of older women, which is rare in this context.

The project has resulted in the doctoral thesis of Pär Hedberg, *Left ventricular systolic dysfunction in 75-year-old men and women*. Eighteen peer-reviewed articles have been published including two in 2014.

Westmannia Cardiovascular Risk Factors Study - WICTORY

During the years 1990-1999 Västmanland County Council ran a project called “Health without limits”, aiming to reduce mortality due to cardiovascular diseases in the county. All men and women of Västmanland who celebrated their 40th or 50th birthday during the study period were offered a health assessment. The offer was extended to more than 51 000 individuals, of whom more than 34 400 (60%) participated in the examination. The aim of the WICTORY project is to follow up this health assessment by an analysis of the association between traditional risk factors for cardiovascular disease, measured at the health assessment, and death/cause of death and diagnoses that occurred after the health assessment. Additional data are also recorded and associations are estimated by health variables measured before the health assessment, e.g. at birth and initiation of military service. Participant follow-up is performed by registry searches with the aim of obtaining data on death/cause of death and hospital admissions after the health assessment date. The risk of premature death and/or morbidity is thereafter calculated with statistical methods for survival analysis. During continuation of follow-up, annual updates of data on mortality, as well as the addition of health-related data measured at military initiation (in men), are planned. Health variables measured at birth (in men and women) are already collected in approximately a third of individuals. The data collected are also linked to data from other projects that partly consist of the same individuals, e.g. the SAVa study, the Swedish Mammography Cohort (SMC) and the Cohort of Swedish Men (COSM).

Results of the study were presented at the *EuroPrevent 2014*, in Amsterdam, Holland, on May 8-10, 2014. A poster entitled *IQ, serum cholesterol and all-cause mortality in Swedish men: a study of IQ at conscription, total serum cholesterol (TC) at age 40 and all-cause mortality after age 40* was awarded a prize for the best abstract and poster at the session on Prevention and Epidemiology. The study group currently includes Prof. Jerzy Leppert, Prof. Göran Nilsson and Ass. Prof. Andreas Rosenblad.

The sentinel node projects

The information whether or not a breast tumour has spread to lymph nodes is crucial for the assessment of prognosis and the choice of postoperative adjuvant systemic therapy. In the late 1990s, the sentinel node biopsy was developed, enabling reliable diagnostics combined with minimal surgical trauma. The sentinel node is the first lymph node receiving lymph fluid from a tumour area in the breast. This lymph node can be identified with the help of a radioactive isotope and blue dye injected in the breast in the tumour's proximity. At surgery, only the sentinel node (which most often is not only one node but two, sometimes more) is excised, and if it is negative, remaining nodes are left behind. The method carries significantly less risk of arm complications than traditional axillary clearance. The project has so far generated three PhD theses, of which the latest was publicly defended in 2012.

It is now clear that the removal of further lymph nodes from the axilla in the event of a negative (metastasis-free) sentinel node lacks relevance. However, the necessity to also excise further lymph nodes in the event of a metastatic sentinel node is starting to be questioned. In case of very small metastatic deposits, so-called micrometastases, this is probably not needed, but even in more extensive nodal involvement, some data suggest that further surgery is possibly unnecessary. In order to clarify this, we have started a cohort study of patients with micrometastases in the sentinel node. Patients will only undergo sentinel node biopsy, and not axillary clearance on the discovery of micrometastases. The study is a multicentre study with some 20 participating hospitals in Sweden. Planned in parallel is a randomized study of patients with macrometastases in the sentinel node who will undergo either axillary clearance or just sentinel node biopsy. This is an international multicentre study, that will start during the spring of 2015, and is expected to include patients during at least 5 years.

The SALVe project - *Liv och Hälsa Ung – (Survey of Adolescent Life in Vestmanland)*

CCR-V staff conduct this survey for pupils in the 7th and 9th grades and the second year at upper secondary school. Researchers from the CCR-V are currently working on a series of scientific studies aiming to deepen the understanding of factors affecting self-destructive behaviour, drug abuse, sexual risk behaviour, obesity, antisocial behaviour, depression and eating disorders, amongst others.

Five students have been linked to the project and registered at Uppsala University, with two PhDs in 2009 and 2010. Within the framework of cooperation with the Dept. of Neuroscience at Uppsala University a number of candidate genes have been developed. During 2005 to 2014, 40 articles were published in international journals. One licentiate degree was carried out in 2014 and two theses are planned for 2015.

The Child and Adolescent Psychiatry project (*First Presentation and Assessment; NOB*)

Comorbidity and treatment response; interaction between psychosocial risk factors and genetic vulnerability in patients in child and adolescent psychiatry.

In 2008, an extensive research project was planned, together with a number of interested individuals at the Child and Adolescent Psychiatry Outpatient Clinic West (Västerås). The project was started in 2009. Its aim is a survey of depression, anxiety, ADHD and behavioural disturbances (oppositional defiant disorder/conduct disorder), comorbidity, psychosocial risk factors, genetic disposition and treatment outcome in patients 4 to 17 years of age received at the Child and Adolescent Psychiatry unit. Age- and sex-related differences are going to be studied. To date, approximately 1300 of 2000 patients have been recruited. In 2011, a PhD student was registered to the project. The first scientific articles have been published and we plan to publish another 3-4 articles during 2015.

Psychiatric Outpatient Care for adults in Sala (*Sala First Presentation and Assessment; SNOB*)

Comorbidity in a psychiatric outpatient clinic for adults. How does treatment affect sick leave – is the outcome influenced by biology and sex?

In 2009, a research project was planned in psychiatric outpatient care for adults in Sala. Its aim is a survey of the incidence of depression, anxiety, ADHD, alcohol and drug abuse, comorbidity, psychosocial risk factors, genetic disposition and treatment outcome in patients received at an adult psychiatric outpatient clinic. Sex differences will be analysed. Patient recruitment started in January 2011. Overall, 1000 patients are planned to be included. The first compilation based on about 500 patients was presented as an internal report to the Västmanland psychiatric services in 2013.

Comorbidity at Maria Ungdom

Comorbidity and treatment response in adolescents with drug and alcohol abuse.

The project is in cooperation with Prof. Sheilagh Hodgins at, amongst others, Maria Ungdom in Stockholm. We are currently running a 5-year follow-up of approximately 200 patients. In addition, their siblings and parents are examined. Comorbidity, treatment response and long-term outcome are going to be studied. Psychosocial and biological factors will be analysed. One PhD student was registered in 2011 and one postdoc was linked to the

project. Another PhD student was registered for the project in 2012. The first articles from the project were published in 2013, and 2-3 articles per year are planned in the coming years.

SALVe Game

Computer games and gambling among adolescents in Västmanland

The project is a cohort study similar to the SALVe and the Child and Adolescent Psychiatry project in substantial parts. We will follow approximately 5000 adolescents in Västmanland for 20 years in order to study gambling habits and their effects on health. It has long been known that there is a great overlap between the background factors of pathological gambling and alcohol abuse. We will study this both from a biological and a psychosocial perspective. Two graduate students are registered with the project. The first data collection began in the autumn of 2012 and ended in 2013. Current information on the project is available at www.ltv.se/salve.

Fall prevention for elderly people in ordinary housing

Fall traumas in the elderly are increasing and imply suffering for the individual and high costs for society. There is evidence that risk of falling is diminished by training. The challenge is to motivate inactive elderly individuals to continue activity. More knowledge is needed on the design of fall-preventive programmes in order to maximally increase participation among the elderly. The study aim is to evaluate and compare the effects regarding fall frequency and fall-related injuries in elderly individuals who do *versus* do not train their balance, leg strength and walking ability. The study is performed in cooperation between the county councils of Uppsala, Västmanland and Sörmland. Individuals 75 years of age and older, living in their own house or flat in one of the three counties, are asked to participate in the study and are randomised to three groups, one of which is a control group. Physiotherapist-led home-based training with or without motivational talks lasts for three months and is followed up for two years. Evaluation is carried out by questionnaire and tests. Hopefully, the results will reduce the number of fall traumas and increase knowledge of effective fall-preventive interventions.

Malnutrition in the elderly who are admitted to hospital

Malnutrition in the elderly means less ability to cope with surgery and generally poorer survival. The extent of the problem, however, is poorly understood. The studies are intended to identify the prevalence of malnutrition in patients who normally stay at home but who are admitted to hospital for emergency or elective surgery. We will also identify risk factors for malnutrition, and compare the prognosis for malnourished patients with that of well-nourished. In order to search for early risk factors amongst lifestyle factors, data from our cohort is linked with a previously collected cohort with data on dietary and lifestyle habits up to 25 years before the patients were hospitalized. Also included is a randomized intervention study in which four different treatments for malnutrition (standard treatment, dietary advice by dietician, nutritional drinks and a combination of nutritional beverages and dietary advice) are compared in terms of survival, quality of life and health care consumption.

Can the choice of anaesthetic drugs affect survival after cancer surgery?

The anaesthesiological care of cancer patients has been acknowledged in recent years. Retrospective studies have shown higher survival for patients who had an epidural or a paravertebral nerve block during and after cancer surgery. The next step is to follow up the results of animal studies that have shown that the choice of anaesthetic agent for maintenance of anaesthesia may play a role in survival.

Different anaesthetic drugs affect the immune system in very different ways by the shift in balance between contributing to or counteracting inflammatory reactions. This may ultimately affect the risk of recurrence and the propensity of the tumour to metastasize. Inhalational anaesthetics, such as sevoflurane, show a more adverse effect in animal studies than the intravenously administered agent propofol. Inhalational agents are also genotoxic, meaning that DNA is negatively affected with a potentially negative effect in the case of cancer. For propofol, the opposite seems to be true. A third possible mechanism to explain the better survival after propofol anaesthesia in animal models is the as yet little investigated Hypoxia Inducible Factor (HIF), which acts as a survival protection for the cancer cells. In a few studies, inhalational agents, but not propofol, seem to upregulate this protective mechanism and thus facilitate cancer cell survival and their ability to develop metastases.

We conducted a retrospective medical record review of nearly 3000 patients who had surgery for breast or colorectal cancer, and who received general anaesthesia with either sevoflurane or propofol. Propofol-based anaesthesia resulted in a more than five per cent higher 5-year survival. The results were blurred, however, by an unequal distribution of confounders and effect modifiers between the groups, and the difference in survival after multiple regression analysis was non-significant. The study was found to be significantly undersized. Given the seriousness of the scientific query, we have gone ahead with a prospective, randomized study, dimensioned on the basis of data from the retrospective study. Inclusion of patients started in Västerås in December 2013, and during 2014 Lund, Linköping, and Örebro followed. Additional centres will be included gradually thereafter.

Purpose: to prospectively assess whether the choice of anaesthetic agents in cancer surgery may play a role in survival.

Question: does propofol-based anaesthesia result in higher survival than sevoflurane-based anaesthesia?

Hypothesis: propofol-based anaesthesia results in an at least 5% higher 1- and 5-year survival rates.

Prospective, randomized, controlled multicentre study. Eight to ten centres are planned to include approximately 300 patients each per year for at least three years for a final study population of 8,000 patients. Uppsala Clinical Research Centre monitors the study.

The outcome measures are:

- cumulative 1- and 5-year survival (overall and relative survival)
- risk of death after stratification for different tumour types, co-morbidity, regional blockade or not, etc.

1- and 5-year survival will be obtained by cross-referencing of the clinical database with data from the different oncological quality registries managed by regional cancer centres (RCCs).

Apart from the doctoral projects described in attachment 2, CCR-V's co-workers are also working on their own research projects. Some of the main research areas are listed below.

Leif Bergkvist

- Sentinel node biopsy in breast cancer – micro metastases
- Sentinel node biopsy in breast cancer – macro metastases
- SentiMag – a new method for sentinel node detection
- Epidemiological studies, diet and cancer, etc.
- Quality of life after breast cancer treatment
- Malnutrition in the elderly

Mats Enlund

- Atelectasis during anaesthesia (tutoring PhD projects together with postdoc Lennart Edmark)
- Cancer and anaesthesia – CAN
- CPR etc. (together with postdoc Marie-Louise Södersved Källestedt)
- Patient safety in the emergency department (together with postdoc Lena Burström)
- Measurement of post-operative recovery via mobile app – REPORT (together with Prof. Ulrica Nilsson, Örebro)
- "Willingness to Pay", a health economic tool

Ulrika Fagerberg

- Diagnostic methods and prognostic markers for inflammatory bowel disease in children
- Methods for the distinction of the two inflammatory bowel diseases Crohn's disease and ulcerative colitis
- Immunological mechanisms in gastrointestinal tract inflammation
- Treatment of inflammatory bowel disease

Pär Hedberg

- Ultrasound diagnostics in cardiovascular disease, especially left ventricular function
- Heart function during physical exertion
- Epidemiological studies of cardiovascular diseases
- The SAVa project

Ann-Christin Johansson

- Investigation and treatment of musculoskeletal pain
- Fall prevention for elderly people in ordinary housing
- Implementation of the FAR method - physical activity on prescription - in primary care patients

Johan Knutsson

- Studies of different types of ear tubes
- Stem cells in the eardrums
- Morbidity after a tonsillectomy
- Oscillatory vibration therapy of nasal congestion

Jerzy Leppert

- Pathophysiology of Raynaud's phenomenon
- Cardiovascular diseases with a focus on the general atherosclerosis process
- Gene-environment interaction, a comprehensive explanatory model of deviant behaviour in adolescents
- Cardiovascular risk factors among 40- and 50-year-olds, long-term follow-up (WICTORY)
- Test Beds in Health Care

Monica Löfvander

- Function, nutrition and vitamin D. Cross-sectional and interventional study. Focus group interviews have also been conducted. Part of this project is implemented in cooperation with the Centre for Family Medicine (Cefam), KI.
- Depression in acute patients in primary care. This project was conducted in cooperation with KI, Cefam and resulted in a thesis.
- Disease and illness perspectives of a multicultural primary care population 1997-2007. Qualitative and quantitative cross-sectional, intervention and long-term studies.

- Pain Descriptions from patients' stories "Half the body" 5 years later. Interview and pain drawing data. To be processed.

Göran Nilsson

- Assessment of 75-year-olds in Västerås. Studies of 10-year survival for men and women residing in Västerås born in 1922 and examined regarding cardiovascular health in 1997.
- Participates in the WICTORY project with follow-up of 40- and 50-year-olds examined in the 1990s.
- Myocardial infarction studies within the SAVa project.

Kent Nilsson

- New technical solutions for the diagnosis of mental ill health
- Social status, a marker of adolescents' lifestyle and health
- Social relations and emotions, predictors of deviant behaviour
- Gene-environment interactions, a comprehensive explanatory model of deviant behaviour in adolescents
- Child and Adolescent Psychiatry, biological vulnerability and psychosocial conditions in relation to comorbidity and treatment response
- Adolescents with abuse, risk and protective factors and psychiatric comorbidity
- ADHD and abnormal cortisol response
- Computer games and gambling among adolescents

Eva Nohlert

- Streamlining of tobacco cessation treatment
- Treatment effectiveness of tobacco cessation programmes
- Cost-effectiveness of tobacco cessation programmes
- Drop-out in tobacco cessation programmes
- Evaluation and development of the Swedish National Tobacco Quitline

Elisabet Rodby-Bousquet

- Age of transition, housing, employment and assistance in young adults with cerebral palsy
- Ankle-foot orthoses for children with cerebral palsy
- Positioning in cerebral palsy
- Physical activity in cerebral palsy and how it is affected by various factors
- Change of position and assistive technology in cerebral palsy
- Musculoskeletal problems in cerebral palsy, hip dislocation, scoliosis and contractures
- Psychometric evaluation of assessment instruments for position, postural ability and scoliosis
- Pain and fatigue in adults with cerebral palsy

Andreas Rosenblad

- Quantile regression for longitudinal data
- Bootstrap for quantile regression
- Computer-intensive statistical methods
- Participates in the WICTORY project with follow-up of 40- and 50-year-olds examined in the 1990s.

Marie-Louise Södersved Källestedt

- Study of ALERT training (a training in acute life-threatening events, recognition and treatment)
- Five-year follow-up of health professionals' theoretical knowledge within cardiopulmonary resuscitation
- The progress of the simulator instructor

Philippe Wagner

- Familial cancer risk, oral contraceptive use and soft tissue sarcoma. Tissue damage and soft tissue sarcoma.

Marie-Louise Walker-Engström

- Patient safety culture in the emergency room in Västerås

Magnus von Unge

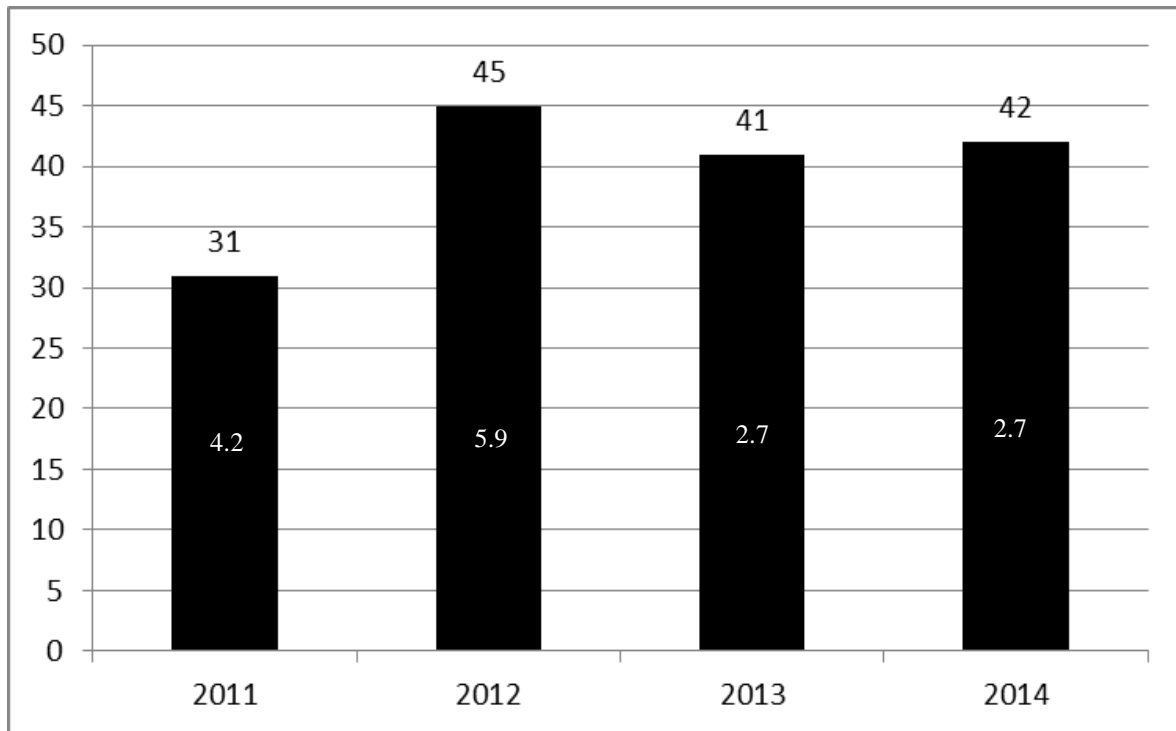
- Taste nerve study
- Intraoperative measurement of ossicle mobility
- Activation of regenerative centres on the eardrum
- Cultivation and analysis of stem cells from the eardrum
- Comparative study of different ear tubes in secretory otitis media

Cecilia Åslund

- Social status, social capital and shame - implications for health and behaviour
- Gene-environment interaction in relation to psychiatric illness and deviant behaviour among adolescents
- Genetic susceptibility for environmental factors and social context – "dandelion" children and "orchid" children
- Type D personality in relation to ill health and cardiovascular disease (supervisor PhD project)
- Computer games and gambling among adolescents in relation to health and behaviour (supervisor PhD project)

Scientific Production

Figure 4. All articles published in 2014 and the previous three years, the number and average impact factor (included in each bar respectively). For the calculation of the impact factor, only publications in journals registered by the Web of Science have been taken into account.



International Peer-Reviewed Journals

42. Sverrisson I, Nikberg M, Chabok A, Smedh K

Hartmann's procedure in rectal cancer: a population-based study of postoperative complications.

Int J Colorectal Dis. 2014 Nov 25 - Epub ahead of print

Impact factor 2.145

41. Isacson D, Andreasson K, Nikberg M, Smedh K, Chabok A

No antibiotics in acute uncomplicated diverticulitis: does it work?

Scand J Gastroenterol. 2014 Dec;49(12):1441-1446 - Epub 2014 Nov 5

Impact factor 2.156

40. Heddini U, Bohm-Starke N, Grönbladh A, Nyberg F, Nilsson KW, Johannesson U

Serotonin Receptor Gene (5HT-2A) Polymorphism is Associated with Provoked Vestibulodynia and Comorbid Symptoms of Pain.

J Sex Med. 2014 Dec;11(12):3064-3071- Epub 2014 Sep 1

Impact factor 3.15

39. Degraeuwe PL, Beld MP, Ashorn M, Canani RB, Day AS, Diamanti A, Fagerberg UL et al

Faecal Calprotectin in Suspected Paediatric Inflammatory Bowel Disease: An Individual Patient Data Meta-Analysis.

J Pediatr Gastroenterol Nutr. 2014 Nov 3 - Epub ahead of print

Impact factor 2.873

38. Jackson C, Aabel P, Eidet JR, Messelt EB, Lyberg T, **von Unge M**, Utheim TP
Effect of storage temperature on cultured epidermal cell sheets stored in xenobiotic-free medium.
PLoS One. 2014 Aug 29;9(8):e105808. doi: 10.1371/journal.pone.0105808. eCollection 2014
 Impact factor 3.534
37. **Nilsson KW**, Comasco E, Hodgins S, Orelund L, **Åslund C**
Genotypes do not confer risk for delinquency but rather alter susceptibility to positive and negative environmental factors: Gene-environment interactions of BDNF Val66Met, 5-HTTLPR, and MAOA-uVNTR.
Int J Neuropsychopharmacol. 2014 Dec 10 - Epub ahead of print
 Impact factor 5.264
36. Hök B, Ljungblad J, Kaisdotter Andersson A, Ekström M and **Enlund M**
Unobtrusive and Highly Accurate Breath Alcohol Analysis Enabled by Improved Methodology and Technology
J Forensic Investigation October 2014;2(4):8
 New journal – no Impact factor
35. Deb S, Johansson I, Byrne D, **Nilsson C**, Investigators k, Constable L, Fjällskog ML, Dobrovic A, Hedenfalk I, Fox SB
Nuclear HIF1A expression is strongly prognostic in sporadic but not familial male breast cancer.
Modern Pathology 2014;27(9):1223-1230
 Impact factor 6.364
34. **G Nilsson, P Hedberg, J Öhrvik**
How to live until 90 – Factors predicting survival in 75-year-olds from the general population
J Healthy Aging Research 2014: 3
 New journal – no Impact factor
33. **Sonnby K**, Skordas K, **Olofsdotter S, Vadlin S, Nilsson KW**, Ramklint M
Validation of the World Health Organization Adult ADHD Self-Report Scale for adolescents.
Nord J Psychiatry 2014 Oct 28:1-8 - Epub ahead of print
 Impact factor 1.5
32. Hägglund G, Alriksson-Schmidt A, Lauge-Pedersen H, **Rodby-Bousquet E, Wagner P**, Westbom L
Prevention of dislocation of the hip in children with cerebral palsy: 20-year results of a population-based prevention programme.
Bone Joint J. 2014 Nov;96-B(11):1546-1552
 Impact factor 2.735
31. Josenby AL, **Wagner P**, Jarnlo GB, Westbom L, Nordmark E
Functional performance in self-care and mobility after selective dorsal rhizotomy: a 10-year practice-based follow-up study.
Dev Med Child Neurol 2014 Oct 30 - Epub ahead of print
 Impact factor 3.292
30. Grandahl M, Tydén T, **Rosenblad A**, Oscarsson M, Nevéus T, Stenhammar C
School nurses' attitudes and experiences regarding the human papillomavirus vaccination programme in Sweden: a population-based survey.
BMC Public Health. 2014 May 31;14:540
 Impact factor 2.32
29. **Åslund C, Larm P**, Starrin B, **Nilsson KW**
The buffering effect of tangible social support on financial stress: influence on psychological well-being and psychosomatic symptoms in a large sample of the adult general population.
Int J Equity Health. 2014 Sep 28;13(1):85 - Epub ahead of print
 Impact factor 1.59

28. Lundh MH, Lampic C, Nordin K, Ahlgren J, **Bergkvist L**, Lambe M, Berglund A, Johansson B
Sickness absence and disability pension following breast cancer - A population-based matched cohort study.
Breast. 2014 Oct 8 - Epub ahead of print
Impact factor 2.581
27. M Wingstrand, G Hägglund, **E Rodby-Bousquet**
Ankle-foot orthoses in children with cerebral palsy: a cross sectional population based study of 2200 children
BMC Musculoskeletal Disorders 2014, 15:327 (2 October 2014)
Impact factor 1.9
26. Ruummele FM, Veres G, Kolho KL, **Fagerberg UL** et al
Consensus guidelines of ECCO/ESPGHAN on the medical management of pediatric Crohn's disease.
J Crohns Colitis 2014 Oct 1;8(10):1179-1207
Impact factor 3.562
25. **Löfvander M, Rosenblad A, Wiklund T**, Bennström H, **Leppert J**
A case-control study of self-reported health, quality-of-life and general functioning among recent immigrants and age- and sex-matched Swedish-born controls.
Scand J Public Health 2014 Sep 23 - Epub ahead of print
Impact factor 3.125
24. **Condén E, Rosenblad A**, Ekselius L, **Åslund C**
Prevalence of Type D personality and factorial and temporal stability of the DS14 after myocardial infarction in a Swedish population.
Scand J Psychol. 2014 Sep 22 - Epub ahead of print
Impact factor 1.147
23. F Calais, O Fröbert, **A Rosenblad, P Hedberg, K Wachtell, J Leppert**
Leisure-time physical inactivity and risk of myocardial infarction and all-cause mortality: A case-control study
Int J Cardiol 2014 Aug 28 - Epub ahead of print
Impact factor 6.175
22. Henriksen E, Selmerud J, **Leppert J, Hedberg P**
Echocardiographic assessment of maximum and minimum left atrial volumes: a population-based study of middle-aged and older subjects without apparent cardiovascular disease.
Int J Cardiovasc Imaging 2014 Sept 13 - Epub ahead of print
Impact factor 2.322
21. **Burström L**, Letterstål A, **Engström ML**, Berglund A, **Enlund M**
The patient safety culture as perceived by staff at two different emergency departments before and after introducing a flow-oriented working model with team triage and lean principles: a repeated cross-sectional study
BMC Health Serv Res. 2014 Jul 9;14:296
Impact factor 1.659
20. **Wagner P**, Alvegård T, Ranstam J, Rydholm A, Vult von Steyern F, Olsson H
Oral contraceptive use, parity, and constitutional characteristics in soft tissue sarcoma: a Swedish population-based case-control study 1988-2009.
Cancer Causes Control. 2014 Sep;25(9):1167-1177 - Epub 2014 Jul 18
Impact factor 3.20
19. Pettersson R, Söderström S, Edlund-Söderström K, **Nilsson KW**
Internet-Based Cognitive Behavioral Therapy for Adults With ADHD in Outpatient Psychiatric Care: A Randomized Trial.
J Atten Disord. 2014 Jun 26 - Epub ahead of print
Impact factor 2.397

18. **Kerstis B**, Berglund A, Engström G, Edlund B, Sylvén S, Aarts C
Depressive symptoms postpartum among parents are associated with marital separation: A Swedish cohort study.
Scand J Public Health 2014 Jul 22 - Epub ahead of print
 Impact factor 3.125
17. **Nohlert E, Öhrvik J**, Helgason AR
Effectiveness of proactive and reactive services at the Swedish National Tobacco Quitline in a randomized trial.
Tob Induc Dis. 2014 Jun 3;12(1):9. doi: 10.1186/1617-9625-12-9. eCollection 2014
 Impact factor 1.5
16. Idestrom M, Rubio CA, Onelöv E, Henter JI, **Fagerberg UL**, Finkel Y
Pediatric Crohn's disease from onset to adulthood: granulomas are associated with an early need for immunomodulation.
Scand J Gastroenterol. 2014 May 27;1-8 - Epub ahead of print
 Impact factor 2.2
15. Alriksson-Schmidt A, Hägglund G, **Rodby-Bousquet E**, Westbom L
Follow-up of individuals with cerebral palsy through the transition years and description of adult life: The Swedish experience
Journal of Pediatric Rehabilitation Medicine: An interdisciplinary Approach. 2014;(7): 53-61
 Impact factor missing
14. **Enlund M**, Berglund A, Andreasson K, Cicek C, Enlund A, **Bergkvist L**
The choice of anaesthetic--sevoflurane or propofol--and outcome from cancer surgery:A retrospective analysis.
Ups J Med Sci. 2014 May 26;1-11 - Epub ahead of print
 Impact factor 1.7
13. **Hedberg P**, Hammar C, Selmeryd J, Viklund J, **Leppert J**, Hellberg A, Henriksen E
Left ventricular systolic dysfunction in outpatients with peripheral atherosclerotic vascular disease: prevalence and association with location of arterial disease.
Eur J Heart Fail 2014;16(6):625-32.
 Impact factor 5.247
12. Isaksson J, **Nilsson KW**, Lindblad F
The Pressure-Activation-Stress scale in relation to ADHD and cortisol.
Eur Child Adolesc Psychiatry. 2014 Apr 16 - Epub ahead of print
 Impact factor 3.699
11. Culverhouse RC, Bowes L, **Åslund C**, **Nilsson KW** et al
Protocol for a collaborative meta-analysis of 5-HTTLPR, stress, and depression.
BMC Psychiatry. 2013 Nov 12;13:304. doi: 10.1186/1471-244X-13-304.
 Impact factor 2.230
10. **Edmark L**, Auner U, Hallén J, Lassinantti-Olowsson L, Hedenstierna G, **Enlund M**
A ventilation strategy during general anaesthesia to reduce postoperative atelectasis.
Upsala J Med Sci. 2014 Aug;119(3):242-250 - Epub 2014 Apr 23.
 Impact factor 1.7
9. Peacock J, Dirckx J, **von Unge M**
Magnetically driven middle ear ossicles with laser vibrometry as a new diagnostic tool to quantify ossicular fixation.
Acta Otolaryngol 2014 Apr;134(4):352-357
 Impact factor 0.990

8. **Edmark L**, Auner U, Lindbäck J, **Enlund M**, Hedenstierna G
Post-operative atelectasis - a randomised trial investigating a ventilatory strategy and low oxygen fraction during recovery.
Acta Anaesthesiol Scand. 2014 Apr 11 - Epub ahead of print
Impact factor 2.355
7. **Mattebo M**, Grün N, **Rosenblad A**, Larsson M, Häggström-Nordin E, Dalianis T, Tydén T
Sexual experiences in relation to HPV vaccination status in female high school students in Sweden.
Eur J Contracept Reprod Health Care. 2014 Apr;19(2):86-92 - Epub 2014 Feb 20.
Impact factor 1.808
6. **Mattebo M**, Larsson M, Tydén T, Häggström-Nordin E
Professionals' perceptions of the effect of pornography on Swedish adolescents
Public Health Nurs. 2014 May;31(3):196-205
Impact factor 0.78
5. **Mattebo M**, Tydén T, Häggström-Nordin E, **Nilsson KW**, Larsson M
Pornography and sexual experiences among high school students in Sweden.
J Dev Behav Pediatr. 2014 Apr;35(3):179-188
Impact factor 1.75
4. **Åslund C**, Starrin B, **Nilsson KW**
Psychosomatic symptoms and low psychological well-being in relation to employment status: the influence of social capital in a large cross-sectional study in Sweden.
Int J Equity Health. 2014 Mar 4;13(1):22. doi: 10.1186/1475-9276-13-22
Impact factor 1.84
3. Sackey H, Magnuson A, Sandelin K, Liljegren G, **Bergkvist L**, Fülep Z, Celebioglu F, Frisell J
Arm lymphoedema after axillary surgery in women with invasive breast cancer
Br J Surg. 2014 Mar;101(4):390-397
Impact factor 5.210
2. **Nilsson G**, Hedberg P, **Öhrvik J**
White blood cell count in elderly is clinically useful in predicting long-term survival.
J Aging Research 2014; 2014 Jan 29 – Epub
New journal – no Impact factor
1. Kalliokoski P, Bergqvist Y, **Löfvander M**
Physical performance and 25-hydroxyvitamin D: a cross-sectional study of pregnant Swedish and Somali immigrant women and new mothers
BMC Pregnancy Childbirth. 2013 Dec;13(1):237. doi: 10.1186/1471-2393-13-237
Impact factor 2.516

National Peer-Reviewed Journals

- A. **Nilsson G**
Att väga sig regelbundet är bra för att hålla vikten
Läkartidningen. 2014;111:CUXM
- B. **Nilsson G**
Evidensbaserad medicin - triumfer och problem.
Läkartidningen 2014;43:111, C4AP, page 1888
- C. **Löfvander M**, Leppert J
Nya rön. God psykisk och fysisk hälsa hos nya invandrare.
Läkartidningen 47/2014. With comments in later issue.

Other Journals

Löfvander M

Somatoforma smärtsyndrom i multikulturell vård

Allmänmedicin 2014;3:39-41

Lectures/Posters International Congresses

The UWA Club for Cell Therapy, University of Western Australia, Perth, Australien, February 13, 2014

M von Unge

Bringing regenerative medicine into the ear

Invited lecture

XII Skandinaviskt Öronkirurgiskt Möte, Geilo, Norge, March 6-9, 2014

M von Unge

Organizer

M von Unge

Cholesteatoma - ethio-pathogenecy and classification

Lecture

12th International Congress on Obesity, Kuala Lumpur, Malaysia, March 2014

Molarius A, Lindén Boström M, Granström F, Karlsson J

12-year trends in obesity by age and educational level in Mid-Sweden – the increase is levelling off among young adults but socioeconomic differences persist

Poster

Master Class IBD Surgery, Ihre Symposium Linköping, April 7-8, 2014

Fagerberg Ulrika L

- Pediatric IBD - Preoperative assessment

- Transition to adult gastroenterology/surgery

Invited lecturer

Europevent 2014, International Congress, European Society of Cardiology (ESC), Amsterdam, Holland, May 8-10, 2014

Nilsson G, Leppert J, Rosenblad A

IQ, serum cholesterol and all-cause mortality in Swedish men: a study of IQ at conscription, total serum cholesterol (TC) at age 40 and all-cause mortality after age 40

Poster – The poster was awarded the prize for the best abstract and poster in the session on Prevention and Epidemiology

19th International Conference of the A.P.P.A.C, Association of Psychology & Psychiatry for Adults and Children, Athens, Greece, May 13-16, 2014

Condén E, Leppert J, Ekselius L, Åslund C.

The prevalence of Type D personality and its associations with psychosomatic symptoms and musculoskeletal pain among adolescents.

Poster

Åslund C, Comasco E, Nordquist N, Leppert J, Orelund L, Nilsson KW

Self-reported family socio-economic status, the 5-HTTLPR genotype, and delinquent behavior in a community-based adolescent population.

Poster

12th International Congress of the European Society of Pediatric Otolaryngology, Dublin, Ireland Maj 31 – June 3, 2014

J Knutsson, L Hessén-Söderman, C Priwin, M von Unge

Does the design and material of transmyringeal ventilation tubes matter?

Lecture

The GPRW Memorial Foundation research meeting: Frontiers 2014. The art, science and future of otorhinolaryngology, Sydney, Australien, July 30 – August 1, 2014

M von Unge

The tympanic membrane. Structure, damage and regenerative processes
International keynote lecture

M von Unge

Intraoperative measurement of ossicular fixation
International keynote speech

20th IEA World Congress of Epidemiology, Anchorage, Alaska, August 17-21, 2014

P Wagner

Discriminatory accuracy of a random effect in logistic regression
Lecture

68th Annual meeting of American Academy of Cerebral Palsy and Developmental Medicine, San Diego, USA September 8-13, 2014

Paleg G, **Rodby-Bousquet E**

IC 34 - Evidence-based best practices for early intervention in natural environments for infants and toddlers with GMFCS levels IV-V

Lecture Instructional Course - Expert level (120 min)

Paleg G, **Rodby-Bousquet E**

BRK 19 - Increasing activity and participation through use of mobility devices for children and adults at GMFCS levels IV-V.

Lecture Breakfast seminar - Advanced level (50 min)

Alriksson-Schmidt A, Hägglund G, **Rodby-Bousquet E**, Westbom L

SP 1 - Living arrangements, occupation, ad use of personal assistance in young Swedes with cerebral palsy.
Poster

Spanish pediatric gastroenterology congress on inflammatory bowel disease, Barcelona, Spain November 7, 2014

Fagerberg Ulrika L

Benefits and limitations of fecal calprotectin in pediatric IBD
Invited lecturer

National Congresses

Formal Lecturer at the Kicki Waller Symposium in Åre, April 2014

Leif Bergkvist

Axillary surgery: past, present, future

SFAM – The Swedish College of General Practice. Congress in Västerås, Maj 14-16, 2014

Löfvander M

Scientific adviser in the congressional committee

Moderator: Workshop on clinical research

Symposium, presentation: Somatoform pain disorder – state of the art

Fagerberg Ulrika L

Abdominal pain in children
Invited lecturer

19th International Surgical Week in Karlstad, August 2014

Catharina Cicek, Yvette Andersson, Leif Bergkvist

May direct assessment of fine needle biopsy by a cytodiagnostician in the Breast Unit reduce the number of return visits for secondary sampling due to insufficient material?

Lecture

Virginia Gonzalez, Staffan Eriksson, Joakim Ramos, Maria Jacobsson, Leif Bergkvist

Spectral mammography – help or hindrance in the diagnosis of dense breasts

Lecture

ÖNH-dagarna (Ear, Nose and Throat Days), Uppsala, August 27-29, 2014

J Knutsson, L Hessén-Söderman, C Priwin, M von Unge

Randomised study of different types of transmyringal ventilation tubes.

Lecture

The Swedish Association for Cardiothoracic Anesthesiology and Intensive Care. Annual meeting in Jönköping September 17-19, 2014

Enlund M

Hot Topics: Cancer and anesthesia.

Lecture

National meeting on Pediatric chronic inflammatory bowel disease, Örebro, Oct 9-10, 2014

Fagerberg Ulrika L

- *Presentation of the work in the European/North American consensus group regarding evidence-based guidelines for the treatment of pediatric Crohn's disease and the new Porto criteria for diagnosis*
- *Adapting the national quality registry for inflammatory bowel disease (SWIBREG) to children*

Co-organizer and lecturer

CPUP conference, Malmö, October 20-21, 2014

Rodby-Bousquet E

The most common problems during sitting, how does it work?

Invited lecturer (40 min)

National congresses in other countries

National CP conference "Sammen på tvers", Spastikerforeningen, Oslo, Norway Januari 30, 2014

Rodby-Bousquet E

Følg oss videre! CPOP også for voksne?

Invited lecturer (45 min)

National CP conference "CP-Lifslangt ferli", Iceland March 21, 2014

Rodby-Bousquet E

Prevention and treatment of muscle contratures and deformities in cerebral palsy

Invited lecturer (40 min)

National CP conference "CPOP, CPRN fagdag 2014", Oslo, Norway March 26, 2014

Rodby-Bousquet E

Posisjonering i 24 timers perspektiv og Posture & Posture Ability Scale

Invited lecturer (60 min)

Miscellaneous Activities

Co-workers at the CCR-V have had external assignments as opponents, members of examination boards at thesis defences and as referees for international scientific journals. They have also lectured at national and international courses and seminars and actively participated as, among others, chairmen/chairwomen of several national and international expert boards and committees.

Mats Enlund

Academic commissions

- Member of the Examination Board for: Peter Jideståhl, Örebro universitet
- Opponent for: Tomi Pösö, Umeå universitet

Co-author, books

- Anestesi (Anaesthesia), Liber publishing, Stockholm, 3^d editon
- Handbok i intravenös anestesi (Hand book in intravenous anaesthesia), FreseniusKabi, Uppsala, 5th edition

Referee-assignments

- Acta Anaesthesiologica Scandinavica x 1
- Medical Science Monitor x 1
- Scandinavian Journal of Trauma, Resuscitation, and Emergency Medicine x 1
- Upsala Journal of Medical Science x 4

Other activities

- Advisory board member Scandinavian Real Heart
- Lecture assignments universities: a) specialist nurse training in intensive care and anaesthesia, Uppsala University; b) further training for anaesthesia nurses, Uppsala University; c) specialty training in basic anaesthesia and intensive care, Örebro University; d) Regional meeting anaesthesia and intensive care, Umeå; e) national post-graduate course in intravenous anesthesia, lecturer and course coordinator.
- Consultant at Mälardalen University: specialist nurse training in intensive care and anaesthesia.
- County Council analysis group member
- County Council research council member
- Reference group member for the Regional Research Foundation, Uppsala-Orebro region.
- Steering group member for Embedded systems, Mälardalen University.
- Steering group member for the Clinical Training Centre, Västmanland County Council
- Steering group member for the Educational Centre, Västmanland County Council

Leif Bergkvist

- Examiner for the European accreditation of breast surgeons within EBSQ, Glasgow, Scotland, March 2014.
- Referee for Br J Surgery, World J Surgery, EJSO, Breast
- Chairman of Svensk Förening för Bröstkirurgi (Swedish Society of Breast Surgeons)

Ulrika L Fagerberg

- Active in the European Society for Pediatric Gastroenterology, Hepatology and Nutrition (ESPGHAN) och European Crohn's and Colitis Organisation (ECCO).
- Active in the Swedish Society for Pediatric Gastroenterology, Hepatology and Nutrition (SPGHN) and the working group for a national care programme for the treatment of chronic inflammatory bowel disease (IBD) and the working group for celiac disease in children and adolescents.
- Active in the Swedish Organisation for the study of Inflammatory Bowel Diseases (SOIBD)
- Active in the national steering committee for the Swedish quality register for inflammatory bowel diseases in children and adolescents (SWIBREG) and Västmanland County data controller.
- Participates in the Advisory Board of the National Research Training Forum GIMIICum (Gastro-Intestinal Mucosal inflammation and Infection Centre) financed by the Swedish Research Council.
- Lecturer and supervisor, specialty training for aspiring pediatricians in pediatric gastroenterology, hepatology and nutrition, Karolinska Institute, Stockholm.
- Lecturer, specialty training in pediatrics for aspiring specialists in child and adolescent psychiatry, Västerås.

- Expert at half-time examination, Linköping University.
- Peer reviewer of the SBU report on Calprotectin in faeces.
- Writer for Internet medicine on Inflammatory bowel disease in children.

Monica Löfvander

Scientific assignments

- Opponent: Kristina Glise, Göteborg May 2014: *Exhaustion disorder*
- Scientific member of the congress committee for the National congress for the Swedish College of General Practice SFAM in Västerås, May 2014
- Symposium: Pain. SFAM congress May 2014
- Supervisor for PhD student

Referee

- Patient Education and Counselling (n=3)
- Scandinavian Journal of Primary Health Care (n=5)
- Family Practice

Science outreach

- Participated in radio programme (interview) SR4 Västmanland on refugees and new immigrants' health as well as TV MittNytt on the same subject.
- Reports and letters to the editor in the Västmanlands läns tidning (newspaper) on refugees and new immigrants' health.

Textbooks

- General medicine, rev edition, 2014. In press. Lund, Studentlitteratur: Chapter 1 (general medical care) and chapter 5 (immigrants and refugees).

Kent Nilsson

- Chairman of the SBU – the Swedish Council on Health Technology Assessment, project on; the Prevention of abuse among children, adolescents and young adults.
- Vice chairman of the Swedish association of Alcohol and Drug Research.
- Peer reviewer for The Icelandic Research Fund.
- Review assignments; Aggressive Behaviour, Drug and Alcohol Dependence, Journal of Adolescent Health, Neuroscience Letters, Pediatrics, BMJ Open och Scandinavian Journal of Psychology.
- Member of the Regional Research Council in the Uppsala-Örebro region, the priorities committee of the Regional Research Council.
- Supervising:
 - Karin Sonnby, CCR-V, Uppsala University, PhD 2014 (main supervisor)
 - Johan Isaksson, Uppsala University, PhD 2014 (co-supervisor)
 - Ulrika Heddini, Karolinska Institute, PhD 2014 (co-supervisor)
 - Sara Lövenhag, CCR-V, Uppsala University, licentiate (main supervisor)
- Science outreach:

Public lectures for the Swedish Association of Local Authorities and Regions, SKL, Uppsala University, U-FOLD, the Association of Local Authorities Norrbotten, the Västmanland county Administrative Board, the Swedish association of Alcohol and Drug Research, Expo Medica Svenska AB/Kunskapskanalen UR, (<http://www.ur.se/Produkter/185471-UR-Samtiden-Beroendedagen-2014-Behandling-av-missbruk-bland-barn-och-unga>), as well as a number of articles in regional media.

Marie-Louise Södersved Källestedt

- Responsible for the Swedish Resuscitation Council's register of education.
- Participated as instructor for nursing students semester 4 and for students from the specialist training in Anaesthesia and intensive care at Mälardalen University.

Philippe Wagner

- Instructor: Course in *Survival Analysis 1 credit*, Undervisning: Kurs i *Överlevnadsanalys 1hp*, the Faculty of Medicine, Lund University.
- Invited lecturer: *Advanced Epidemiology* November 13-14, 2014, in Malmö, for the researchers network EPIHealth, Lund University.
- Regular reviewer specialising in statistics and epidemiological methods: *International journal of clinical pharmacy*

Magnus von Unge

- Opponent at Thorbjörn Lundberg's PhD thesis defence at University of Umeå, entitled "Assessment of Tympanic Membrane. A Study of Children with Otitis Media in General Practise", April 4
- Opponent at Michael Gaihede's PhD thesis defence at University of Aalborg, Denmark, entitled "Investigations on Tympanometric Determination of Middle Ear Pressures", June 6
- Faculty reviewer (Australian protocol) of Yi Shen's thesis at University of Western Australia, entitled "Development of Biocompatible Materials for Use in Myringoplasty", March
- Course Lecturer in the undergraduate course in ENT diseases for medical students at the University of Oslo, Norway
- Head of ENT Research Group, Campus Ahus, University of Oslo
- Reviewer for Acta Oto-Laryngologica, Hearing Research, JARO, Int J of Ped Otorhinolaryngol and other journals
- Main supervisor for
 - Katarina Berling, CCR-V, Uppsala University
 - Nadine Schart-Morén, Uppsala University
 - Peder Aabel, University of Oslo, Norway
- Co-supervisor for
 - Torstein Grønseth, Oslo Universitet, Norway
 - Anders Niklasson, Umeå Universitet

Yvette Andersson

- Referee for Br J Surgery, World J Surgery

Cecilia Åslund

- Review assignments: Journal of Adolescence, Molecular Genetics & Genomics, Journal of Epidemiology & Community Health, Social Science & Medicine
- Expert statement for The Icelandic Research Fund.
- Lecturer, Medical program, Örebro University, T5, gene-environment interaction within psychiatric research, two occasions.
- Supervision:
 - Emelie Condén, CCR-V, Uppsala University, dissertation 2014 (main supervisor)
 - Charlotta Hellström, CCR-V, Uppsala University (supervisor)
 - Sara Lövenhag, CCR-V, Uppsala University, med lic 2014 (co-supervisor)
 - Sofia Vadlin, CCR-V, Uppsala University (co-supervisor)
- Science outreach: Participated in TV interviews and newspaper documentaries on Tvärsnytt and the Västmanlands Läns Tidning, about orchid children, dandelion children, and relations to psychiatric ill health and delinquency

Research Grants

The Centre for Clinical Research administers the various research grants of Västmanland County Council.

Research positions

Västmanland County Council has seven doctoral positions at 50%, and between four and eight post-doctoral positions at 25-50%. These research positions are advertised continuously as soon as they are released. Employees of Västmanland County Council are entitled to apply. The structure is based on a two-year appointment with a maximum of 50% at CCR-V combined with the applicant's other duties within Västmanland County Council. The two-year appointment may be extended for two years at a time, up to a total of six years, per applicant. Doctoral positions (90% of regular salary) are applied for in competition with others, and are given to applicants who are close to, or have passed their half-time review/Licentiate degree. Post-doctoral positions (with pay) are open to medical staff who have passed their PhD examination within the past five years.

Doctoral Positions (50%) at the CCR-V

Karin Sonnby , MD, Child and Adolescent Psychiatry (01/10/2011-31/05/2014)	<i>Co-occurring symptoms of ADHD and depression: psychosocial risk factors, genetic vulnerability and sex differences</i>
Lisa Söderström , reg. dietician, CCR-V (01/04/2012-31/03/2016)	<i>Prevalence of malnutrition and predictive factors for impaired nutritional status in elderly patients at a medium-sized Swedish hospital</i>
Johan Carlander , MD, Dept. Of Surgery (01/09/2012-31/12/2015)	<i>Heat production, nerve function and morphology following dissection with surgical instruments</i>
Emelie Condén , RN, Dept. of Medicine (01/01/2013-31/12/2014)	<i>Type D personality and its impact on the health of adolescents and cardiovascular disease in adults</i>
Firas Al-Ubaidi , MD, Dept. of Urology (01/04/2013-31/03/2015)	<i>Studies of the mechanisms underlying the additive effect of neoadjuvant castration in radiotherapy of prostate cancer</i>
Sara Lövenhag (née Björstad), psychologist, Child and Adolescent Psychiatry Västerås (01/09/2013-31/08/2015)	<i>Psychiatric, sociodemographic and interpersonal factors involved in the misuse of alcohol and drugs by adolescents</i>
Philippe Wagner , biostatistician, CCR-V (01/07/2014-30/06/2016)	<i>Cancer morbidity in prosthetic surgery</i>
Susanne Olofsdotter , psychologist, Child and Adolescent Psychiatry Sala (01/11/2014-31/10/2016)	<i>Anxiety disorders: prevalence and comorbidity, interaction between psychosocial risk factors and genetic vulnerability in Child and Adolescent Psychiatry patients</i>
Hanna Frid , reg. dietician, dialysis/CCR-V (01/12/2012-28/02/2014)	<i>To prevent and treat malnutrition in the elderly – evaluation of nutrition therapy and nursing staff attitudes</i>
	Hanna F discontinues her PhD studies 01/03/2014.

Postdocs with Individualized Degrees of Affiliation

<p>Maziar Nikberg (formerly Hosseinali Khani, PhD, Dept. of Surgery, 25 % (01/05/2012–30/04/2016): <i>Colorectal cancer, diverticulosis.</i></p>
<p>Peter Grant, PhD, Dept. of Orthopaedics, 25 % (01/09/2012–31/08/2014): <i>Early prosthetic joint infections treated with soft tissue debridement and implant retention. Peroperative evaluation of clothing and ventilation in orthopaedic implant surgery - a study based on more than 300 peroperative Colony Forming Unit (CFU) measurements in the operating field.</i></p>
<p>Abbas Chabok, PhD, Dept. of Surgery, 25 % (01/12/2012–30/11/2016): <i>Colorectal cancer, diverticulosis.</i></p>
<p>Elisabet Rodby-Bousquet, PhD, CCR-V, 50 % (01/01/2013-31/12/2016): <i>Position, postural ability and movements in cerebral palsy</i></p>
<p>Peter Larm, PhD, 50% (01/05/2013-30/04/2015): <i>Risk and protective factors for alcohol and drug abuse among young people</i></p>
<p>Fredrik Söderqvist, PhD, centre of excellence for health, 12.5% (01/06/2013—31/05/2015): <i>The links between health and the use of wireless telephones (mobile and cordless desktop phones)</i></p>
<p>Yvette Andersson, PhD, Dept. of Surgery, 25% (01/01/2014-31/12/2015): <i>Sentinel node in clinical practice – implications for breast cancer treatment and prognosis</i></p>

Research grants – research time (research weeks)

At Västmanland County Council there are two research grants aimed at developing expertise in hospital care through research. Employees of Västmanland County Council are eligible to apply. The research grant, equivalent to 90% of the basic salary, represents compensation for wage costs during the time the applicant conducts projects of a scientific nature.

Research grants for projects with clinical affiliation – announced in the spring

The target group is county council employees. The applicant must have proven academic skills, or be supervised by such person in his or her research. Granted for a maximum of eight full-time weeks per researcher and year.

Research grants for PhD students and postdocs – announced in the autumn

The target group is PhD students and postdocs who intend to continue their research work in order to acquire the competence of Senior Lecturer, Associate Professor or Professor. Granted for a maximum of eight full-time weeks per researcher and year.

Research Grants 2014 – projects with clinical affiliation

Karin Sonnby, MD, Child and Adolescent Psychiatry, 6 weeks	<i>Sensitivity and specificity of two different assessment questionnaires for symptoms of depression in adolescents; versions for self-assessment and parent report</i>
Lisa Söderström, Reg. Dietician, CCR-V, 6 weeks	<i>Economic impact of malnutrition among older patients – a prospective nested case-control study</i>
Susanne Olofsdotter, Psychologist, Child and Adolescent Psychiatry Sala, 6 weeks	<i>Anxiety disorders in adolescents: prevalence and co-morbidity and evaluation of the self-assessment form SCAS (Spence Children's Anxiety Scale)</i>
Virginia Gonzalez, MD, Dept. of Surgery, 4 weeks	<i>New diagnostic modalities in breast cancer assessment</i>
Christina Carlander, MD, Dept. of Infectious Diseases, 6 weeks	<i>Risk of cervical neoplasia among HIV-1 positive women in Sweden</i>
Emeli Månsson, MD, Dept. of Infectious Diseases, 6 weeks	<i>Changes in the skin's normal flora in patients undergoing joint replacement surgery – a descriptive study of prospectively collected CoNS isolates from 100 patients</i>
Nils Block, MD, Dept. of Infectious Diseases, 6 weeks	<i>The importance of clinical and bacterial factors for the development of complications in meningitis caused by pneumococcus.</i>
Jonas Selmeryd, MD, Dept. of Physiology, 6 weeks	<i>Right atrial size in middle-aged and older subjects free from cardiovascular disease</i>
Cecilia Ranhem, MD, Specialist Dept. of Obstetrics and Gynecology, 4 weeks	<i>HPV prevalence in primary vaginal cancer and its relation to clinicopathological variables</i>
Merit Kullinger, MD, Specialist Dept. of Obstetrics and Gynecology, 6 weeks	<i>Ultrasound Pregnancy Dating and Risk for Perinatal Morbidity and Mortality – When Dates Mismatch</i>
Monica Löhman, RN, Beroendecentrum Västmanland (Addiction centre), 4 weeks	<i>Drug trial at Qb test</i>
Magdalena Mattebo, Midwife, Capio Health Centre, 4 weeks	<i>Pornography, adolescents and health</i>

Doctoral Research Grants 2014

Susanne Olofsdotter , Psychologist, Child and Adolescent Psychiatry Sala, 8 weeks	<i>Anxiety disorders in adolescents: prevalence and co-morbidity and evaluation of the self-assessment form SCAS (Spence Children's Anxiety Scale)</i>
Katarina Berling , MD, ENT, 6 weeks	<i>Taste influence in ear disease and after ear surgery</i>
Karin Sonnby , MD, Child and Adolescent Psychiatry Västerås, 6 weeks	<i>Sensitivity and specificity of two different assessment questionnaires for symptoms of depression in adolescents; versions for self-assessment and parent report</i>
Merit Kullinger , MD, Specialist Dept. of Obstetrics and Gynecology, 8 weeks	<i>Ultrasound Pregnancy Dating and Risk for Perinatal Morbidity and Mortality – When Dates Mismatch</i>
Birgitta Kerstis , RN, CCR-V, 4 weeks	<i>Fathers postpartum depressive symptoms association to bonding with the infant.</i>
Magdalena Mattebo , Midwife, Capio Health Centry, 4 weeks	<i>Pornography, adolescents and health</i>
Lana Salih , MD, Kvinnohälsan AB, 4 weeks	<i>Lifestyle and reproductive health in multicultural Sweden – a prospective study of women seeking help for infertility</i>

Postdoctoral Research Grants 2014

Ass. Prof. Pär Hedberg , MD, Dept. of Physiology, 6 weeks	<i>Studies of atherosclerosis in Västmanland (SAVa project)</i>
PhD Catarina Tiselius , MD, Dept. of Surgery, 4 weeks	<i>Study of treatment and follow-up of low grade mucoid appendix neoplasm</i>
Ass. Prof. Göran Isaksson , DMD, Västmanland Hospital, 3 weeks	<i>Pain relief after an intra-articular injection of methylprednisolone vs. placebo in patients with arthralgia of the temporomandibular joint. A randomised controlled blinded multicenter study.</i>

Doctoral positions at CCR-V funded by external sources

The externally funded PhD students are part of the group involved in the SALVe project. The financiers are the Svenska Spel Research Council, Stockholm County Council, the Swedish Council for Working Life and Social Research (FAS), the König-Söderströmska Foundation and the Uppsala-Örebro Regional Research Council.

Charlotta Hellström , MSc, licentiate, 70% (01/01/2014-31/12/2014)	<i>Adolescent gambling habits and associated health effects</i>
Sara Lövenhag , Psychologist 30% (01/01/2014-31/12/2014)	<i>Youth and dependency: Psychiatric, sociodemographic and interpersonal factors concerning the misuse of alcohol and drugs by adolescents</i>
Susanne Olofsdotter , Psychologist, Child and Adolescent Psychiatry Sala 10% (01/01/2014-31/12/2014)	<i>Anxiety disorders: prevalence and co-morbidity, interaction between psychosocial risk factors and genetic vulnerability in child and adolescent psychiatric patients</i>
Aniruddha Todkar , Pharmacist 100% (01/01/2014-31/12/2014)	<i>Genetics of alcohol use disorders</i>
Sofia Vadlin , Social worker 90% (01/01/2014-31/12/2014)	<i>Psychosocial and genetic factors in relation to gambling behaviour among children and adolescents in Västmanland</i>

External Research Grants

One of the most important prerequisites for conducting research is to secure funding, both short term and long term. To maintain research activities with the same intensity as at present, and if possible increase it, funding by external means is necessary. Our hope is that everyone working on a research project actively seeks various funding externally, which is also an advantage for a continued scientific career.

Researchers employed by/affiliated to the CCR-V are increasingly applying for means from different funds in order to finance their studies. In 2014, employees at the CCR-V received the following external research grants:

Project	<i>Cancer and anesthesia (CAN)</i>
Project leader	Mats Enlund
Foundation	Research Council, 925 000 kr/year, 2013-2015 Regional Research Council, 750 000 kr
Amount	1 675 000 kr
Project	<i>SENOMAC – Survival and axillary recurrence after sentinel node-positive breast cancer without supplementary axillary clearance – a randomized study of patients with sentinel node macrometastases.</i>
Project leader	Leif Bergkvist
Foundation	BRO
Amount	400 000 kr
Project	<i>Psychosocial and heritable factors related to gambling behaviour among adolescents and risk for future development of pathological gambling</i>
Project leader	Kent Nilsson
Foundation	Hjärnfonden (third year in a row)
Amount	500 000 kr

Open House

Open House implies that all employees of Västmanland County Council may book a meeting with one of our researchers, supervisors or research assistants to discuss their thoughts regarding possible research projects. No complete research plan is necessary, a well-considered proposal is quite enough. The supervisors will evaluate the proposal's potential and give advice on how to proceed.

Project development is a new activity introduced in 2012. Those projects that are, in association with Open House or an application for project affiliation, thought to possess potential but need support for further development are offered project development. This support is given through tutorship by a postdoc or PhD student with competence in the specific area and a senior supervisor as a mentor. No projects were granted project development in 2014.

In 2014, 20 consultations were conducted at the CCR-V; open house/project development, *in accordance with the list below*. In addition, consultations with our external consultants, professor/sociologist Bengt Starrin of Karlstad University and professor/statistician John Öhrvik of Karolinska Institutet were held about once/month.

Date	OH	PD	Present	Title
07/01/2014	x		<p><i>Maria Heyman</i>, Foundation doctor Dept. of pediatrics, Västerås <i>Barbro Diderholm</i>, MD, Dept. of Women's and Children's Health, pediatrics, Akademiska hospital, Uppsala</p> <p>From CCR-V: Ulrika Fagerberg, PhD Lisa Söderström, licentiate, PhD student Eva Nohlert, PhD</p>	<i>Parenteral nutrition for preterm infants.</i>
21/01/2014	x		<p><i>Tymon Pol</i>, Foundation doctor, Dept. of medicin, Köping</p> <p>From CCR-V: Jerzy Leppert, Professor Göran Nilsson, Professor Marja-Leena Ojutkangas, Research ass. Eva Nohlert, PhD</p>	<i>Medical care for the most ill elderly people – How can it be improved?</i>
18/02/2014	x		<p><i>Athir Tarish</i>, senior consultant, Geriatrics Dept. G-MÅLVA</p> <p>From CCR-V: Lisa Söderström, licentiate, PhD student Monica Löfvander, Ass. Prof. Eva Nohlert, PhD</p>	<i>Identification of patients at high risk of readmission to inpatient care within 30 days after discharge.</i>
19/02/2014	x		<p><i>Gunnthorunn Steinarsdottir</i>, MD general practice</p> <p>From CCR-V: Monica Löfvander, Ass. Prof.</p>	<i>Wants to do a study from the patients' perspective and their attitudes, values and beliefs about blood sugar and treatment.</i>

Date	OH	PD	Present	Title
25/02/2014	x		<p><i>Henrik Jonsson</i>, univ lecturer Mälardalen University and <i>Lennart Edmark</i>, senior consultant, PhD, Dept. of Surgery</p> <p>From CCR-V: Mats Enlund, Ass. Prof. Eva Nohlert, PhD Mattias Rehn, Research Ass.</p>	<i>Automatic spontaneous respiration/pressure ventilation with PEEP – called ASPP.</i>
18/03/2014	x		<p><i>Elisabet Granstam</i>, senior consultant eye clinic</p> <p>From CCR-V: Göran Nilsson, Professor Philippe Wagner, Statistician Eva Nohlert, PhD</p>	<ol style="list-style-type: none"> <i>Obesity surgery and diabetic retinopathy: a pilot study.</i> <i>AMD project (age changes in the macula).</i>
25/03/2014	x		<p><i>David Stenholtz</i>, MD, Dept. of Oncology</p> <p>From CCR-V: Leif Bergkvist, Professor Jerzy Leppert, Professor</p>	<i>Comparison between LCHF and HCLF diets in terms of risk markers for cardiovascular disease, type 2 diabetes and cancer, a randomised cross-over study.</i>
01/04/2014	x		<p><i>Johanna Zetterlund</i>, physiotherapist</p> <p>From CCR-V Elisabet Rodby-Bousquet, PhD Eva Nohlert, PhD</p>	<i>Johanna has previously worked as a research assistant and is interested in participating in future research.</i>
08/04/2014	x		<p><i>Elisabeth Lithammer</i>, School nurse Ormkärsskolan</p> <p>From CCR-V Kent Nilsson, Professor Eva Nohlert, PhD</p>	<i>Children's attention span and conflicts at school and at home and possible connections with the intake of sweets and soft drinks.</i>
140429	x		<p><i>Ahmad Ayad</i>, medical specialist, Neurology, Västerås</p> <p>From CCR-V: Eva Nohlert, PhD Jerzy Leppert, Professor Marja-Lena Ojutkangas, Research Ass. Annika Kärsund, Research Ass.</p>	<i>RCT, drugs after stroke.</i>
13/05/2014	x		<p><i>Elisabeth Lithammer</i>, School nurse Ormkärsskolan</p> <p>From CCR-V: Kent Nilsson, Professor Eva Nohlert, PhD</p>	<p><i>Children's attention span and conflicts at school and at home and possible connections with the intake of sweets and soft drinks.</i></p> <p><i>Continuation of discussion started 08/04/2014.</i></p>
16/06/2014	x		<p><i>Johanna Karlsson</i>, Head of dept. Viksäng Maternal and Child Health Psychologists <i>Jenny Karlsson</i>, Psychologist, Viksäng Maternal and Child Health Psychologists</p> <p>From CCR-V: Cecilia Åslund, PhD Philippe Wagner, Statistician</p>	<i>Evaluation of patients' experience of maternal and child health psychologists' work.</i>

Date	OH	PD	Present	Title
16/09/2014	x		<p><i>Frida Dahlbäck and Hege Andreassen, Psychologists, Viksång Maternal and Child Health Psychologists.</i></p> <p>From CCR-V: Cecilia Åslund, PhD Karin Sonnby, PhD Birgitta Kerstis, Research Ass.</p>	<p><i>Comparison of COS-P intervention and TAU at Maternal and Child Health psychologist and discussion regarding population study to investigate help-seeking patterns to MCH psychologist.</i></p>
07/10/2014	x		<p><i>Daniel Isaksson, Surgeon</i></p> <p>From CCR-V: Leif Bergkvist, Professor Philippe Wagner, Statistician Eva Nohlert, PhD</p>	<p><i>Diverticulitis</i></p>
07/10/2014	x		<p><i>Gabriel Heyman, Foundation doctor</i> From KCH (Centre of Excellence for Health): Bo Simonsson, PhD</p> <p>From CCR-V: Monica Löfvander, Ass. Professor Göran Nilsson, Professor Eva Nohlert, PhD</p>	<p><i>Antibiotic resistance from a systems and user perspective.</i></p>
12/11/2014	x		<p><i>Jir Barzangi, dentist, FTV (Swedish Public Dental Service) Köping</i></p> <p>From CCR-V: Monica Löfvander, Ass. Prof. Eva Nohlert, PhD</p>	<p><i>Removal of tooth buds in infants of East African origin as traditional medicine.</i></p>
18/11/2014	x		<p><i>Josefin Ullberg, medical specialist</i> Children's clinic.</p> <p>From CCR-V: Ulrika Fagerberg, PhD Philippe Wagner, statistician Eva Nohlert, PhD</p>	<p><i>FPEIS (food protein-induced enterocolitis syndrome).</i></p>
09/12/2014	x		<p><i>Erland Östberg, anesthetist.</i></p> <p>From CCR-V: Mats Enlund, Ass. Prof. Angelica Norling, Research Ass. Eva Nohlert, PhD</p>	<p><i>Discussion of papers in PhD project on finding a method to easily prevent the development of atelectasis using "preoxygenation elimination".</i></p>
09/12/2014	x		<p><i>Lena Burström, PhD EKV (Knowledge management and training).</i></p> <p>From CCR-V: Mats Enlund, Ass. Prof. Tony Wiklund, Research Ass. Eva Nohlert, PhD</p>	<p><i>Discussed project with evaluation of ambulance routing via SOS Alarm vs. own routing through nurses.</i></p>
16/12/2014	X		<p><i>Adam Berszstel, senior consultant, Vascular Surgery.</i></p> <p>From CCR-V: Jerzy Leppert, Prof. Andreas Rosenblad, Ass. Prof./Statistician Eva Nohlert, PhD</p>	<p><i>Varicer study.</i></p>

Registered PhD students

Potential progression markers and HPV in primary vaginal cancer: clinical and diagnostic impact

D66 – Dept. of Women's and Children's Health, Karolinska Institute/CCR-V

2014-12

PhD student Cecilia Ranhem, M.D.
Department Department of Obstetrics and Gynecology, Västmanland Hospital Västerås
Supervisor Prof Sonia Andersson, Dept for Women's and Children's Health, Karolinska Intitute
Assistant supervisors Kristina Hellman, MD, PhD, Dept of Oncology-Pathology, Karolinska Institute
 David Lindquist, MD, PhD, Dept of Radiation Science, Umeå University
 Ann-Cathrin Hellström, Ass Prof, Dept of Oncology-Pathology, Karolinska Institute

Admitted 1st June 2014
Licentiate
Doctoral dissertation Planned autumn 2019
Institution Medical science
Subject Medical science
Research training Courses and theory modules: Licentiate degree 15 credits. Doctoral degree 30 credits.
Cumulative credits Required courses: 9.8 credits
 Common required (introduction to scientific research, etc. (8.5-11.5 credits)
 Courses specifically required for the doctoral studies subject (3.5-6.5 credits)

Cumulative credits Optional training modules, certified by supervisor: **2.4 credits**
 Literature studies Seminars Congresses
 Specific courses

Subprojects

1. Human papillomavirus, p16^{INK4A} and Ki-67 in relation to clinicopathological variables and survival in primary carcinoma of the vagina.
2. HPV and the molecular markers p16^{INK4A} and Ki 67 in primary carcinoma of the vagina.
3. Expression of human leucine-rich repeats and immunoglobulin-like domains (LRIG) genes in primary carcinoma of the vagina.
4. Possible prognostic value of Wig-1 in primary carcinoma of the vagina.

Planned articles

Hellman K, Lindquist D, Ranhem C, Wilander E, Andersson S. Human papillomavirus, p16^{INK4A} and Ki-67 in relation to clinicopathological variables and survival in primary carcinoma of the vagina. Br J Cancer 2014 Mar 18;110(6):1561-70

Planned articles with each subproject.

Recieved funding during doctoral studies

<i>Västmanland County Council</i>				
Miscellaneous research grants	Doctoral research grants	Doctoral positions 50 %	Internal R&D (FoU) grant	County Council research fund
2014: 4 weeks				

<i>External research grants</i>	
Externally funded doctoral studentship/research time	Other external grants

Rectal cancer: aspects of type of operation and complications

D65 – percentage at CCR-V 100%

2014-12

PhD student Ingvar Sverrisson, M.D.
Department Dept. of Surgery, Västmanland Hospital Västerås
Supervisor Kenneth Smedh, Prof., CCR-V/Dept. of Surgery
Assistant supervisors Maziar Nikberg, PhD, CCR-V/Dept. of Surgery
 Abbas Chabok, PhD, CCR-V/Dept. of Surgery

Admitted September 2014
Licentiate
Doctoral dissertation Autumn 2018
Institution Centre for Clinical Research
Subject Medical Science
Research training Courses and theory modules: Licentiate degree 15 credits. Doctoral degree 30 credits.

Cumulative credits Required courses, documented in *Updok*:credits
 Common required (introduction to scientific research, etc. (8.5-11.5 credits)
 Courses specifically required for the doctoral studies subject (3.5-6.5 credits)

Cumulative credits Optional training modules, certified by supervisor:credits
 Literature studies Seminars Congresses
 Specific courses

Subprojects and planned articles

- Hartmanns procedure in rectal cancer: a population-based study of postoperative complications*
- Analyse morbidity and mortality after Hartmann's operation for rectal cancer in a national population-based study with data from Svenska rektalcancerregistret (SRCR).*
- Compare abdominoperineal excision with intersphincteric dissection for rectal cancer with Hartmann's operation regarding pelvic morbidity, i.e. pelvic abscesses and perineal wound infections: a multicentric randomised study (HAPIrect).*
- Compare abdominoperineal excision with intersphincteric dissection for rectal cancer with Hartmann's operation regarding quality of life: a multicentric randomised study.*
- Compare the development of stoma hernia in patients with rectal cancer who underwent surgery for permanent colostomy, where patients during two different time periods received prophylactic nets, or not. A population-based registry study with data from the local cancer registry in Västmanland.*
- Investigate if patients with rectal cancer who have had bowel resections and who earlier in life have received radiation to the prostate due to prostate cancer have more postoperative complications, more recurrences and poorer survival rates compared to patients with rectal cancer who have had prostate cancer but not received radiotherapy to the prostate.*

Received funding during doctoral studies

Västmanland County Council				
Miscellaneous research grants	Doctoral research grants	Doctoral positions 50 %	Internal R&D (FoU) grant	County Council research fund

External research grants	
Externally funded doctoral studentship/research time	Other external grants

Treatment of acute uncomplicated diverticulitis

D64 – percentage at department of surgical science 100%

2014-12

PhD student Daniel Isacsson, M.D.
Department Dept. of Surgery, Västerås
Supervisor Kenneth Smedh, Prof., CCR-V/Dept. of Surgery
Assistant supervisors Abbas Chabok, M.D., PhD, CCR-V/Dept. of Surgery
 Maziar Nikberg, M.D., PhD, CCR-V/Dept. of Surgery
Admitted 19th June 2014
Licentiate
Doctoral dissertation
Institution Uppsala University, Department of Surgical Science
Subject Medical Science
Research training Courses and theory modules: Licentiate degree 15 credits. Doctoral degree 30 credits.

Cumulative credits Required courses, documented in *Updok*:credits
 Common required (introduction to scientific research, etc. (8.5-11.5 credits)
 Courses specifically required for the doctoral studies subject (3.5-6.5 credits)

Cumulative credits Optional training modules, certified by supervisor:credits
 Literature studies Seminars Congresses
 Specific courses

Subprojects

1. *No antibiotics in acute uncomplicated diverticulitis. Does it work?*
2. *Outpatient management without antibiotics for acute uncomplicated diverticulitis is safe: a prospective study*
3. *AVOD study; 5-year follow-up*

Planned articles

4. *No antibiotics in acute uncomplicated diverticulitis. Does it work?*
5. *Outpatient management without antibiotics for acute uncomplicated diverticulitis is safe: a prospective study*

Received funding during doctoral studies

<i>Västmanland County Council</i>				
Miscellaneous research grants	Doctoral research grants	Doctoral positions 50 %	Internal R&D (FoU) grant	County Council research fund

<i>External research grants</i>	
Externally funded doctoral studentship/research time	Other external grants

HPV-associated cancer in HIV-infected women

D63 – Dept. of Medicine, Huddinge, Karolinska Institute/CCR-V

2014-12

PhD student **Christina Carlander, M.D.**
Department Infectious diseases, Västerås
Supervisor Anders Sönnnerborg, Prof., Karolinska Institutet
Assistant supervisors Joakim Dillner, Prof. KI
 Pär Sparén, Prof., KI
 Kristina Elfgren, Senior Physician, Karolinska Hospital
Contact at CCR-V Jerzy Leppert, Prof.
Admitted 21st January 2014
Licentiate
Doctoral dissertation
Institution Department of Medicine, Huddinge, KI/CCR-V
Subject Medical science
Research training Courses and theory modules: Licentiate degree 15 credits. Doctoral degree 30 credits.

Cumulative credits Required courses, documented in : **4.5 credits**
 Common required (introduction to scientific research, etc. (8.5-11.5 credits)
 Courses specifically required for the doctoral studies subject (3.5-6.5 credits)
 Introduction SPSS, Karlstad, , (3 credits)
 Introduktion STATA, KI, 2014 (1.5 credits)

Cumulative credits Optional training modules, certified by supervisor:credits
 Literature studies Seminars Congresses
 Specific courses

Subprojects

- *Risk of cervical neoplasia among HIV-infected women in Sweden*
- *Distribution of HPV-genotypes among high-grade cervical neoplasia among HIV-infected and HIV-negative women in Sweden*

Planned articles

High risk of high-grade cervical neoplasia among HIV-infected women in Sweden

Received funding during doctoral studies

<i>Västmanland County Council</i>				
Miscellaneous research grants	Doctoral research grants	Doctoral positions 50 %	Internal R&D (FoU) grant	County Council research fund
2014: 6 weeks				

<i>External research grants</i>	
Externally funded doctoral studentship/research time	Other external grants

Staphylococcus epidermidis and prosthetic joint infections – host-microbe interactions

D62 – School of Health and Medical Sciences, Örebro University/CCR-V

2014-12

PhD student Emeli Månsson, MD.
Department Dept. of Infectious diseases, Västerås
Supervisor Bo Söderquist, Professor, Örebro University
Assistant supervisors Martin Sundqvist, MD, PhD, Örebro University Hospital
 Åsa Nilsson, MD, PhD, Linköping University
 Eva Särndahl, professor, Örebro University
Contact at CCR-V Leif Bergkvist, Professor
Admitted 18th November, 2013
Licentiate
Doctoral dissertation
Institution IHM, Örebro University
Subject Medical science, medicine
Research training Courses and theory modules: Licentiate degree 15 credits. Doctoral degree 30 credits.

Cumulative credits Required courses, documented in :credits
 Common required (introduction to scientific research, etc. (8.5-11.5 credits)
 Courses specifically required for the doctoral studies subject (3.5-6.5 credits)

Cumulative credits Optional training modules, certified by supervisor: **4.6 credits**
 Literature studies Seminars Congresses
 Specific courses

1. *Coagulase-negative staphylococci isolated in the laminar airflow during prosthetic joint surgery, focusing on phenotype and genotype of S. epidermidis*
2. *Changes in the skin's normal flora in patients undergoing artificial joint surgery – a descriptive study of 100 prospectively collected CoNS isolates from patients with focus on S. epidermidis*
3. *Host-microbe interactions: Has S. epidermidis isolated from infected joints the capacity to initiate activation of the inflammasome in polymorphnuclear leukocytes?*
4. *Host-microbe interactions: Are there genetic host factors that increase the risk of prosthetic joint infections?*

Planned articles

Sequence types of *Staphylococcus epidermidis* associated with prosthetic joint infections are not present in the laminar air flow during prosthetic joint surgery.

Received funding during doctoral studies

<i>Västmanland County Council</i>				
Miscellaneous research grants	Doctoral research grants	Doctoral positions 50 %	Internal R&D (FoU) grant	County Council research fund
2014: 6 weeks				

<i>External research grants</i>	
Externally funded doctoral studentship/research time	Other external grants
	2014: Folke Nordbrings stiftelse: 4638 kr 2014: SLS resestipendium: 4036 kr

Pneumococcal meningitis - risk factors, sequelae and death in relation to other bacterial infections of the central nervous system

D61 – MTS, Karolinska Institute/CCR-V

2014-12

PhD student Nils Block, M.D.
Department Dept. of Infectious diseases, Västerås
Supervisor Birgitta Henriques Normark, professor, MTC, Karolinska Institute
Assistant supervisors Tomas Vikerfors, Ass. Prof., Dept. of Infectious Diseases in Västerås
 Pontus Naucér, M.D., Dept. of Infectious Diseases, Karolinska University Hospital

Contact at CCR-V Philippe Wagner, statistician
Admitted December 2013
Licentiate -
Doctoral dissertation Planned late 2017
Institution MTC, Karolinska Institute
Subject Infection biology
Research training According to the curriculum of Karolinska Institute

Cumulative credits Required courses, documented in *Updok*:credits
 Common required (introduction to scientific research, etc. (8.5-11.5 credits)
 Courses specifically required for the doctoral studies subject (3.5-6.5 credits)

Cumulative credits Optional training modules, certified by supervisor:credits
 Literature studies Seminars Congresses

Subprojects

1. *To study the etiology and epidemiology of bacterial meningitis in Sweden and the impact of pathogen specific and clinical factors on burden of disease*
2. *To study the impact of pneumococcal properties and clinical factors on disease development in pneumococcal meningitis*
3. *To study the significance of pathogen and clinical factors for short and long time sequelae in meningitis caused by *S. pneumoniae**
4. *To study the role played by pathogen and clinical factors for short term mortality in pneumococcal meningitis*

Received funding during doctoral studies

<i>Västmanland County Council</i>				
Miscellaneous research grants	Doctoral research grants	Doctoral positions	Internal R&D (FoU) grant	County Council research fund
2014: 6 weeks	-	50 %	2014: 30000 SEK	2014: 30000 SEK

<i>External research grants</i>	
Externally funded doctoral studentship/research time	Other external grants
2014-2017: Karolinska Institute part-financing of PhD student (KID): 1080000 SEK (270000 SEK per year)	-

Quality of life and musculoskeletal deformities in children with cerebral palsy

D60 – Clinical Sciences, Lund University/CCR-V

2014-12

PhD student	Katina Pettersson , reg. physiotherapist
Department	Centre for Habilitation, Västerås
Supervisor	Gunnar Häggglund, Professor, Department of Orthopedics, Lund University
Assistant supervisors	Elisabet Rodby-Bousquet, PhD, reg. physiotherapist, CCR-V
Admitted	1 st December 2013
Licentiate	
Doctoral dissertation	
Institution	Clinical Sciences, Lund University
Subject	Orthopedics
Research training	According to the curriculum of Lund University, 10 credits + 12 credits
Cumulative credits	<u>Required courses</u> , documented in Lund 5 credits/10 credits <input checked="" type="checkbox"/> Introduction Course <input type="checkbox"/> Research Ethics <input type="checkbox"/> Statistical Methods within Medical Research <input type="checkbox"/> Scientific communication <input type="checkbox"/> Oral Communication <input checked="" type="checkbox"/> Courses specifically required for the doctoral studies, Orthopedics 4 weeks
Cumulative credits	<u>Optional training modules</u> , certified by supervisor: ...credits/12 credits <input checked="" type="checkbox"/> Research based on registry data, Umeå University

Subprojects

1. Psychometric evaluation of the questionnaire CPCHILD “*Caregiver Priorities and Child Health Index of Life with Disabilities*”, for Swedish conditions. CPCHILD is a measure of overall health and quality of life for children and adolescents with severe cerebral palsy.
2. Evaluation of agreement between self-reported and parent-reported health and quality of life according to the CPCHILD questionnaire.
3. Cross-sectional cohort study of health in adolescents with cerebral palsy based on data from cohorts in the Swedish and Norwegian cerebral palsy registries.
4. Retrospective longitudinal study of children and adolescents with CP born 1992-2012 regarding the use and outcome of different types of standing aids and spinal braces.

Received funding during doctoral studies

<i>Västmanland County Council</i>				
Miscellaneous research grants	Doctoral research grants	Doctoral positions	Internal R&D (FoU) grant	County Council research fund
	2015: 4 weeks	50 %		

<i>External research grants</i>	
Externally funded doctoral studentship/research time	Other external grants
2014: FBU – 40 000 kr	
2014: Linnéa och Josef Carlssons Stiftelse – 100 000 kr	

Cancer morbidity in prosthetic surgery

D59 – Clinical Sciences/CCR-V

2014-12

PhD student Philippe Wagner, biostatistician
Department CCR-V
Supervisor Håkan Olsson, Professor, Cancer Epidemiology, Lund University
Assistant supervisors Lars Lidgren, Professor, Orthopedics, Lund University
Admitted 1st December 2010
Licentiate
Doctoral dissertation
Institution Clinical Sciences, Lund University
Subject Cancer epidemiology
Research training Courses and theory modules: Licentiate degree 15 credits. Doctoral degree 30 credits.

Cumulative credits Required courses, documented in Lund **7 credits/8.5 credits**
 Introduction Course Research Ethics
 Statistical Methods within Medical Research Scientific communication
 Oral Communication

Cumulative credits Optional training modules, certified by supervisor:credits
 Literature studies Seminars Congresses
 Specific courses

Subprojects

Increased cancer risks among arthroplasty patients: 30 year follow-up of the Swedish Knee Arthroplasty Register. Eur J Cancer. 2011 May;47(7):1061-1071

Metal-on-metal joint bearings and hematopoietic malignancy. Acta Orthop 2012 Dec; 83(6):553-558

Oral contraceptive use, parity and constitutional characteristics in soft tissue sarcoma: a Swedish population-based case-control study 1988-2009. Cancer Causes Control. 2014 Sep; 25(9):1167-1177

Planned articles

Familial cancer risk, oral contraceptive use and soft tissue sarcoma. Tissue damage and soft tissue sarcoma.

Received funding during doctoral studies

<i>Västmanland County Council</i>				
Miscellaneous research grants	Doctoral research grants	Doctoral positions 50 %	Internal R&D (FoU) grant	County Council research fund
		1st Jul 2014 – 30th Jun 2016		

<i>External research grants</i>	
Externally funded doctoral studentship/research time	Other external grants

Bone formation and healing adjacent to biomaterials in the facial skeleton using PET/CT

D58 – Department of Surgical Science, Oral - Maxillo Surgery/CCR-V

2014-12

PhD student **Anders-Petter Carlsson, DDS**
Department Department of Oral Maxillofacial Surgery, Västmanland Hospital, Västerås
Supervisor Andreas Thor, Ass. Prof., Department of Surgical Science, Oral - Maxillo Surgery, Uppsala
Assistant supervisors Jens Sörensen, Ass. Prof., Department of Surgical Science, Ortopaedics, Uppsala
Contact at CCR-V Philippe Wagner, statistician
Admitted 16th December 2013
Licentiate
Doctoral dissertation 2016
Institution Department of Surgical Science, Oral - Maxillo Surgery, Uppsala /CCR-V
Subject Surgical science
Research training Courses and theory modules: Licentiate degree 15 credits. Doctoral degree 30 credits.

Cumulative credits Required courses, documented in *Updok*:credits
 Common required (introduction to scientific research, etc. (8.5-11.5 credits)
 Courses specifically required for the doctoral studies subject (3.5-6.5 credits)

Cumulative credits Optional training modules, certified by supervisor:credits
 Literature studies Seminars Congresses

Subprojects

1. *PET/CT. A novel method to investigate bone healing around dental implants*
2. *PET/C used to compare early bone formation between two different dental implant surfaces. A clinical study.*
3. *Imaging of new bone formation with Positron Emission Tomography and Computed Tomography (PET/CT) around dental implants in augmentations of the atrophic edentulous maxilla. A clinical study.*
4. *PET/CT used to investigate bone formation adjacent to TMJ-prosthesis. A clinical retrospective study.*

Planned articles**Received funding during doctoral studies**

<i>Västmanland County Council</i>				
Miscellaneous research grants	Doctoral research grants	Doctoral positions 50 %	Internal R&D (FoU) grant	County Council research fund

<i>External research grants</i>	
Externally funded doctoral studentship/research time	Other external grants

New diagnostic modalities in breast cancer assessment

D57 – percentage at CCR-V 100%

2014-12

PhD student Virginia Gonzalez, M.D.
Department Department of Surgery, Västmanland Hospital, Västerås
Supervisor Staffan Eriksson, Ass. Prof., Dept. of Surgery, Västerås
Assistant supervisors Kerstin Sandelin, Ass. Prof., Department of Molecular Medicine and Surgery, Karolinska Institute.
 Brita Arver, PhD, Department of Oncology and Pathology, Karolinska Institute
 Leif Bergkvist, Professor, Center for Clinical Research, Västerås
Admitted 13th of November 2013
Licentiate
Doctoral dissertation
Institution Center for Clinical Research
Subject Medical Science
Research training Courses and theory modules: Licentiate degree 15 credits. Doctoral degree 30 credits.

Cumulative credits Required courses, documented in *Updok*:credits
 Common required (introduction to scientific research, etc. (8.5-11.5 credits)
 Courses specifically required for the doctoral studies subject (3.5-6.5 credits)

Cumulative credits Optional training modules, certified by supervisor:credits
 Literature studies Seminars Congresses

Subprojects

1. *PreOperative MRI of the Breast (POMB) influences primary treatment in breast cancer – A prospective randomized multicentere study*
2. *Breast MRI provided additional information in 83/220 patients shown in study one. These findings will be further analyzed and described in detail. MRI findings will be compared with pathological findings. Breast density will be correlated to re-excision/reoperation in the no MRI group. Results of follow-up of MRI after 3-6 months will be reported.*
3. *This study will be a 5-year follow-up of the POMB patients on morbidity and survival. Health-related economic consequences will be further studied and the EQ5D survey will be presented. All eligible patients for the POMB study were not included in the trial during the study period. These patients will be studied closer regarding surgical treatment and reoperation rate.*
4. *The aim of this study is to compare breast MRI and contrast-enhanced mammography in the assessment of breast cancer in women with dense breast tissue. Radiology will be compared with histopathological analysis. Sensitivity, specificity, positive predictive value and negative predictive value will be calculated for each modality.*

Receieved funding during doctoral studies

Västmanland County Council				
Miscellaneous research grants	Doctoral research grants	Doctoral positions 50 %	Internal R&D (FoU) grant	County Council research fund
2011: 4 weeks				
2012: 6 weeks				
2013: 8 weeks				
2014: 4 weeks				

External research grants	
Externally funded doctoral studentship/research time	Other external grants

**Ultrasound Pregnancy Dating and Risk for Perinatal Morbidity and Mortality –
When Dates Mismatch**

D56 – percentage at CCR-V 100%

2014-12

PhD student Merit Kullinger, M.D.
Department Dept. of Obstetrics and Gynecology, Västmanland Hospital, Västerås
Supervisor Alkistis Skalkidou, Ass.Prof., Institution of Women's and Children's Health, Uppsala
Assistant supervisors Helle Kieler, Ass. Prof., Centre for Pharmacoepidemiology, Solna
 Ulf Högberg, Professor, Institution of Women's and Children's Health, Uppsala
Admitted 11th of June 2014
Licentiate Planned during 2015
Doctoral dissertation Planned during 2017
Institution Center for Clinical Research, Uppsala University
Subject Medical Science
Research training Courses and theory modules: Licentiate degree 15 credits. Doctoral degree 30 credits.

Cumulative credits Required courses, documented in *Updok*:credits
 Common required (introduction to scientific research, etc. (8.5-11.5 credits)
 Courses specifically required for the doctoral studies subject (3.5-6.5 credits)

Cumulative credits Optional training modules, certified by supervisor:credits
 Literature studies Seminars Congresses

Subprojects

1. To examine if differences in perinatal morbidity and mortality between boys and girls born prematurely changed after ultrasound was introduced in Sweden as a method of determining gestational age.
2. To examine the rates of adverse pregnancy outcomes between preterm born infants of different sex but similar gestational age based on the level of discrepancy between the LMP and US-based dating.
3. To compare the rates of adverse pregnancy outcomes among post- and pre-term newborns born to short and tall mothers, respectively, according to the discrepancy between LMP and US-based pregnancy dating.
4. To describe factors associated with a difference in gestational length between the LMP calculation, and ultrasound examination in the first and in the early second trimester, respectively.

Planned articles

With each subproject. First article planned to be finished during 2014.

Received funding during doctoral studies

<i>Västmanland County Council</i>				
Miscellaneous research grants	Doctoral research grants	Doctoral positions 50 %	Internal R&D (FoU) grant	County Council research fund
2014: 6 weeks	2014: 8 weeks			2012 75000:-

<i>External research grants</i>	
Externally funded doctoral studentship/research time	Other external grants
	Regional Research Fund 200000:-

**Lifestyle and reproductive health in multicultural Sweden: a prospective study
of women seeking help for infertility**

D55 – percentage at CCR-V 30%, Department for Public Health and Caring Science 30% 2014-12
Institution of Women's and Children's Health 40%

PhD student Lana Salih Joelsson, M.D.
Department Dept. of Obstetrics and Gynecology, Västmanland Hospital, Västerås
Supervisor Tanja Tydén, Professor, Department for Public Health and Caring Science, UU
Assistant supervisors Kjell Wånggren, PhD, Institution of Women's and Children's Health, UU
 Anna Berglund, PhD, National Women's Peace Center, UU
 Andreas Rosenblad, Ass. Prof., CCR Västerås
Admitted 23rd of April 2013
Licentiate 1st of February 2016
Doctoral dissertation 20th of April 2018
Institution CCR-V, Dept. of Public Health and Caring Science, Uppsala University, Dept. of Women's and Children's Health, Uppsala University
Subject Medical Science
Research training Courses and theory modules: Licentiate degree 15 credits. Doctoral degree 30 credits.
Cumulative credits Required courses, documented in *Updok*:credits
 Common required (introduction to scientific research, etc. (8.5-11.5 credits)
 Courses specifically required for the doctoral studies subject (3.5-6.5 credits)
Cumulative credits Optional training modules, certified by supervisor:credits
 Literature studies Seminars Congresses
 Specific courses

Subprojects

1. *What lifestyle changes (diet, smoking/ snuff, consumption of alcohol and caffeine, intake of folic acid and Vitamin D, exercise, and possibly weight regulating measures) do women who want to get pregnant undertake?*
2. *The three groups; "pregnant by using assisted reproduction", "not pregnant infertile women" and "pregnant spontaneously but well planned" (from the MVC study) are compared with respect to changes in the variables: alcohol and caffeine intake, BMI, smoking, intake of folic acid, vitamin and herbal consumption, doctor visits, medication, exercise and diet.*
3. *Swedish-born compared with foreign-born infertile women in terms of demographic and socio-economic backgrounds in relation to pregnancy planning; length of infertility, when they first seek help, and the time until the woman become pregnant. A translation into Arabic is planned, in order to include women who do not speak Swedish in the study. The questionnaires Q1 and Q1 I are used. Are there differences between the two groups in terms of the partner's role in pregnancy planning and lifestyle changes?*
4. *Correlation between "adverse childhood experiences" and infertility period analyzed from Q1i.*

Planned articles

1. *Till vilken grad planerar kvinnor sina graviditeter (To what degree do women plan their pregnancies).*

Received funding during doctoral studies

<i>Västmanland County Council</i>				
Miscellaneous research grants	Doctoral research grants	Doctoral positions 50 %	Internal R&D (FoU) grant	County Council research fund
	2014: 4 weeks			

<i>External research grants</i>	
Externally funded doctoral studentship/research time	Other external grants

**Heat production, nerve function and morphology following dissection
with surgical instruments**

D54–Dept. of Clinical and Experimental Medicine, Linköping University/CCR-V

2014-12

PhD student **Johan Carlander, M.D.**
Department Dept. of Surgery, Västmanland Hospital, Västerås
Supervisor Ass. Prof. Kenth Johansson, Dept. of Surgery, Linköping
Assistant supervisors Prof. Oliver Gimm, Dept. of Surgery, Linköping
 Prof. Leif Bergkvist, CCR-V
Admitted 13th of October 2011
Half-time examination 14th of December 2012
Doctoral dissertation Planned for Sept. 2014
Institution CCR-V/Dept. of Clinical and Experimental Medicine, Linköping University
Subject Surgery
Research training Courses and theory modules: Licentiate degree 15 credits. Doctoral degree 30 credits.

Cumulative credits Required courses, documented in *Updok*:credits
 Common required (introduction to scientific research, etc. (8.5-11.5 credits)
 Courses specifically required for the doctoral studies subject (3.5-6.5 credits)

Cumulative credits Optional training modules, certified by supervisor:credits
 Literature studies Seminars Congresses
 Specific courses

Planned articles

1. *Comparison of experimental nerve injury caused by ultrasonically activated scalpel and elctrosurgery*
2. *Risk of iatrogenic nerve injury with heat producing surgical instruments*
3. *Is one millimeter a safe distance to approach a nerve with energy based surgical devices?*
4. *Risk of nerve injury after use of heat generating surgical instruments during thyroid surgery.*

Recieved funding during doctoral studies

<i>Västmanland County Council</i>				
Miscellaneous research grants	Doctoral research grants	Doctoral positions 50 %	Internal R&D (FoU) grant	County Council research fund
		1 st Sep 2012- 31 st Dec 2015		

<i>External research grants</i>	
Externally funded doctoral studentship/research time	Other external grants
	Financed by FORSS

Genetics of alcohol use disorders

D53—percentage at CCR-V 100 %

2014-12

PhD student **Aniruddha Todkar**, MSc
Department CCR-V/Department of Neuroscience, Uppsala University
Supervisor Erika Comasco, PhD, Dept. of Neuroscience, Uppsala University
Assistant supervisors Prof. Kent Nilsson, CCR-V
 Prof. Sheilagh Hodgins, Stockholm County Council/Kings College, London
 Prof. Lars Orelan, Dept. of Neuroscience, Uppsala University
Admitted 21st of June 2012
Half-time examination 2015
Doctoral dissertation 2016
Institution CCR-V/ Dept. of Neuroscience, Uppsala University
Subject Medicine and pharmacy
Research training Courses and theory modules: Licentiate degree 15 credits. Doctoral degree 30 credits.

Cumulative credits Required courses, documented in *Updok*: **12.5 credits**
 Common required (introduction to scientific research, etc. (8.5-11.5 credits)
 Courses specifically required for the doctoral studies subject (3.5-6.5 credits)

Cumulative credits Optional training modules, certified by supervisor: **3.5 credits (to be registered)**
 Literature studies Seminars Congresses (2 credits)
 journal club (1.5 credits) Specific courses

Subprojects

- *Trajectory of outcomes for alcohol use and misuse through the lens of gene-by-environment interactions*
- *Genetic and epigenetic profiling in relation to early-life stress and ethanol binge drinking in rats*

Planned articles

- *Experimental evidence of a link between the $\alpha 2A$ -adrenergic receptor gene, early life stress and ethanol drinking (**Under review**)*
- *Gene-set-based expression and DNA methylation analyses in hypothalamus and pituitary of rats exposed to early life stress and adult ethanol drinking (**Manuscript**)*
- *HPA axis related genotypes and psychosocial factors in relation to alcohol use and misuse in adolescents*

Published articles:

- **Todkar A, Nilsson KW, Orelan L, Hodgins S, Comasco E: Serotonin transporter genotype by environment: Studies on alcohol use and misuse in non-human and human primates **Translational Neuroscience 4(2) 2013, 241-250****

<i>External research grants</i>	
Externally funded doctoral studentship/research time	Other external grants
1 st Mar 2012 – 31 st Dec 2012	
1 st Jan 2013 – 31 st Dec 2013	
1 st Jan 2014 – 31 st Dec 2014	

**Psychosocial and genetic factors in relation to gambling behavior among children
and adolescents in Västmanland**

D52 – percentage at CCR-V 100 %

2014-12

PhD student Sofia Vadlin, Bachelor of Science in Social Work
Department Dept. of Child and Adolescent Psychiatry/CCR-V
Supervisor Prof. Kent W Nilsson, CCR-V
Assistant supervisors Cecilia Åslund, PhD, CCR-V
 Erika Comasco, PhD, Dept. of Neuroscience, Uppsala University
Admitted 21st of June 2012
Half-time examination 2015
Doctoral dissertation 2016
Institution CCR-V/ Dept. of Neuroscience, Uppsala University
Subject Neuroscience
Research training Courses and theory modules: Licentiate degree 15 credits. Doctoral degree 30 credits.

Cumulative credits Required courses, documented in *Updok*: **16.5 credits**
 Common required (introduction to scientific research, etc. (8.5-11.5 credits)
 Courses specifically required for the doctoral studies subject (3.5-6.5 credits)

Cumulative credits Optional training modules, certified by supervisor:credits
 Literature studies Seminars Congresses

Subprojects

1. *Gaming and gambling behaviour in adolescents in relation to interaction between environmental and genetic factors.*
2. *Gaming and gambling behaviour in adolescents in relation to degree of methylation in candidate genes for monoamines, androgenes and neuropeptides.*
3. *Gaming and gambling behaviour in adolescents in relation to psychiatric conditions such as affective disorders and antisocial behaviour and in relation to interaction between environmental and genetic factors.*
4. *Gaming and gambling behaviour in adolescents in relation to alcohol and drug abuse and in relation to interaction between environmental and genetic factors.*

Subprojects (published)

- 1) Development and content validity of a screening instrument for gaming addiction in adolescents, the Gaming Addiction Identification Test (GAIT)

Recieved funding during doctoral studies

<i>Västmanland County Council</i>				
Miscellaneous research grants	Doctoral research grants	Doctoral positions 50 %	Internal R&D (FoU) grant	County Council research fund
2010: 3 weeks				
2011: 5 weeks				
2012: 4 weeks				

<i>External research grants</i>	
Externally funded doctoral studentship/research time	Other external grants
2012-2014: financed by Svenska Spel (90 %)	

The effect of psychiatric, sociodemographic and interpersonal factors on adolescent substance use

D51 – percentage at CCR-V 80 %

2014-12

PhD student Sara Lövenhag Reg. Psychologist
Department Department of Child and Adolescent Psychiatry, Vasteras
Supervisor Prof. Kent Nilsson, CCR-V
Assistant supervisors Cecilia Åslund, PhD, CCR-V
 Peter Larm, PhD, CCR-V
Admitted 20th of December 2011
Licentiate seminar 16th May 2014
Doctoral dissertation 12th Jun 2015
Institution CCR-V/ Dept. of Neuroscience, Uppsala University
Subject Neuroscience
Research training Courses and theory modules: Licentiate degree 15 credits. Doctoral degree 30 credits.

Cumulative credits Required courses, documented in *Updok*: **18 credits**
 Common required (introduction to scientific research, etc. (8.5-11.5 credits)
 Courses specifically required for the doctoral studies subject (3.5-6.5 credits)

Cumulative credits Optional training modules, certified by supervisor: **5.1376 credits**
 Literature studies Seminars Congresses

Subprojects (published)

1. *A five-year follow-up study of adolescents who sought treatment for substance misuse in Sweden*

Subprojects (unpublished)

2. *Validity of self-reports of illicit drug use among adolescents; questionnaire, in-depth interview, and hair analysis.*
3. *Antisocial behaviour reduces the association between ADHD subdimensions and alcohol use in a large population-based sample of adolescents*
4. *Substance risk use among adolescents at a specialist psychiatric outpatient clinic in Sweden*

Received funding during doctoral studies

<i>Västmanland County Council</i>				
Miscellaneous research grants	Doctoral research grants	Doctoral positions 50 %	Internal R&D (FoU) grant	County Council research fund
2010: 3 weeks 2012: 4 weeks 2013: 6 weeks		From 1 st of September 2013 until 1 st of September 2015		

<i>External research grants</i>	
Externally funded doctoral studentship/research time	Other external grants

Nutritional status among older people – risk factors and consequences of malnutrition

D50 – percentage at CCR-V 100 % 2014-12

PhD student Lisa Söderström, Registered Dietician, Med. lic
Department CCR-V
Supervisor Prof. Leif Bergkvist, CCR-V
Assistant supervisors Eva Thors Adolfsson, PhD, Department of Primary Health Care
 Anja Saletti, PhD, Department of Public Health and Caring Science, Clinical Nutrition and Metabolism, Uppsala University
 Andreas Rosenblad, Ass. Prof., CCR-V
Admitted 15th of June 2011
Half-time examination 15th of October 2013
Doctoral dissertation 2016
Institution CCR-V/Dept. of Public Health and Caring Science, Clinical Nutrition and Metabolism, Uppsala University
Subject Medical Science
Research training Courses and theory modules: Licentiate degree 15 credits. Doctoral degree 30 credits.

Cumulative credits Required courses, documented in *Updok*: **10,5 credits**
 Common required (introduction to scientific research, etc. (8.5-11.5 credits)
 Courses specifically required for the doctoral studies subject (3.5-6.5 credits)

Cumulative credits Optional training modules, certified by supervisor: **20 credits**
 Literature studies Seminars Congresses
 Specific courses

Subprojects

1. *Mealtime habits and meal provision are associated with malnutrition among elderly patients admitted to hospital.*
2. *Nutritional status predicts preterm death in older people: a prospective cohort study*
3. *A high energy intake from dietary fat among middle-aged and older adults is associated with increased risk of malnutrition 10 years later*
4. *The association between nutritional status and cause-specific mortality: a prospective cohort study*

Published articles: Soderstrom L, Thors Adolfsson E, Rosenblad A, Frid H, Saletti A, Bergkvist L. *Mealtime habits and meal provision are associated with malnutrition among elderly patients admitted to hospital.*

Clin Nutr 2013;32(2): 281-288.

Söderström L, Rosenblad A, Adolfsson ET, Saletti A, Bergkvist L. *Nutritional status predicts preterm death in older people: a prospective cohort study.* **Clinical Nutrition 2014;33(2): 354-359**

Remaining articles, according to the subprojects above.

Received funding during doctoral studies

<i>Västmanland County Council</i>				
Miscellaneous research grants	Doctoral research grants	Doctoral positions 50 %	Internal R&D (FoU) grant	County Council research fund
2011: 4 weeks	2011: 4 weeks	From 1 st of April	2011: 75 000 kr	2011: 55 000 kr
2012: 6 weeks	2012: 6 weeks	2012 until 31 st of	2013: 55 000 kr	2014: 99 000 kr
2013: 8 weeks	2012: 4 weeks	March 2014	2014: 34 000 kr	
2013: 6 weeks	2013: 6 weeks			

<i>External research grants</i>	
Externally funded doctoral studentship/research time	Other external grants
	2011: Capios research fund: 44 000 kr 2012: Capios research fund: 30 000 kr

Taste disorders in middle ear disease and after middle ear surgery

D49 –percentage at CCR-V 100%

2014-12

PhD student Katarina Berling, M.D.
Department ENT department, Västmanland Hospital, Västerås
Supervisor Magnus von Unge, Professor, CCR-V
Assistant supervisors Johan Knutsson, PhD, CCR-V
Admitted 24th May 2011
Half-time examination 23rd of October 2013
Doctoral dissertation 2015
Institution CCR-V
Subject Medical Science
Research training Courses and theory modules: Licentiate degree 15 credits. Doctoral degree 30 credits.

Cumulative credits Required courses, documented in *Updok*: **13 credits**
 Common required (introduction to scientific research, etc. (8.5-11.5 credits)
 Courses specifically required for the doctoral studies subject (3.5-6.5 credits)

Cumulative credits Optional training modules, certified by supervisor: **9 credits**
 Literature studies Seminars Congresses
 Specific courses

Subprojects

1. Evaluation of the two methods for taste assessment used in the clinical study: electrogustometry and the filter paper disc method.
2. A clinical prospective trial where 100 patients undergoing primary middle ear surgery because of chronic otitis, cholesteatoma or otosclerosis are evaluated with EGM and FPD before and after surgery.
3. A clinical multicenter study on 200 patients undergoing primary surgery due to otosclerosis. These patients answer a questionnaire concerning subjective taste disturbances and another questionnaire on quality of life.
4. A histological study with electron microscopy of CTN from healthy ears and from ears with chronic otitis or cholesteatoma.

Published articles

Berling K, Knutsson J, Rosenblad A, von Unge M
Evaluation of electrogustometry and the filter paper disc method for taste assessment.
Acta Otolaryngol 2011;131(5):488-493. Epub 2011 Mar 10

Accepted articles

Berling K, Mannström P, Ulfendahl M, von Unge M
Electron Microscopy changes of the Chorda Tympani Nerve in Inflammatory Middle Ear Disease
Acta Otolaryngol. 2014 (accepted in December)

Received funding during doctoral studies

<i>Västmanland County Council</i>				
Miscellaneous research grants	Doctoral research grants	Doctoral positions 50 %	Internal R&D (FoU) grant	County Council research fund
2010: 4 weeks 2011: 6 weeks	2013: 8 weeks 2014: 6 weeks		2014: 42600 sek	

<i>External research grants</i>	
Externally funded doctoral studentship/research time	Other external grants
	2014: RFR –300000 sek

Anxiety disorders: clinical characteristics in a child and adolescent outpatient psychiatric population

D48 – percentage at CCR-V 100%

2014-12

PhD student **Susanne Olofsdotter**, Reg. Psychologist
Department Dept. of Child and Adolescent Psychiatry, Sala
Supervisor Prof. Kent Nilsson, CCR-V
Assistant supervisors Prof. Tomas Furmark, Institution of Psychology, Uppsala University
Admitted 28th of April 2011
Half-time examination Planned 2015
Doctoral dissertation Planned 2016
Institution CCR-V/ Dept. of Neuroscience, Uppsala University
Subject Medical Science
Research training Courses and theory modules: Licentiate degree 15 credits. Doctoral degree 30 credits.
Cumulative credits Required courses, documented in *Updok*: **16.5 credits**
 Common required (introduction to scientific research, etc. (8.5-11.5 credits)
 Courses specifically required for the doctoral studies subject (3.5-6.5 credits)

Cumulative credits Optional training modules, certified by supervisor: **15 credits**
 Literature studies Seminars Congresses
 Specific courses

Subprojects

1. *Assessing Adolescent Anxiety in General Psychiatric Care: Diagnostic Accuracy of the Swedish Self-Report and Parent Versions of the Spence Children's Anxiety Scale*
2. *Prevalence of anxiety disorders in a child – and adolescent clinical population; sex and age differences.*
3. *Prevalence, comorbidity and predictors of treatment of anxiety disorders in adolescents*
4. *Interaction between 5-HTTLPR serotonin transporter polymorphism and stressful life events on symptoms of anxiety in children.*

Received funding during doctoral studies

<i>Västmanland County Council</i>				
Miscellaneous research grants	Doctoral research grants	Doctoral positions 50 %	Internal R&D (FoU) grant	County Council research fund
2008: 4 weeks	2012: 6 weeks	141101-161031		
2010: 3 weeks	2013: 8 weeks			
2011: 6 weeks	2014: 8 weeks			
2012: 4 weeks				
2013: 8 weeks				
2014:6 weeks				

<i>External research grants</i>	
Externally funded doctoral studentship/research time	Other external grants

Health effects of adolescent gaming and gambling habits

D47 – CKF 100 %

2014-12

PhD student **Charlotta Hellström**
Department Mälardalen University Västerås/CCR-V
Supervisor Cecilia Åslund, PhD, CCR-V
Assistant Supervisors Prof. Jerzy Leppert, CCR-V
 Prof. Kent Nilsson, CCR-V
Admitted 28th of April 2011
LIC examination 26th of November 2013
Doctoral dissertation 24th of April 2015
Institution CCR-V/Dept. of Public Health and Caring Science
Subject Medical Science
Research training Courses and theory modules: Licentiate degree 15 credits. Doctoral degree 30 credits.

Cumulative credits Required courses, documented in *Updok*: **19.0 credits**
 Common required (introduction to scientific research, etc. (8.5-11.5 credits)
 Courses specifically required for the doctoral studies subject (3.5-6.5 credits)

Cumulative credits Optional training modules, certified by supervisor: **5.1 (more to come)**
 Literature studies Seminars Congresses
 Specific courses

Subprojects

1. *Adolescents and computer gaming, prevalence, time, motives and negative consequences.*
2. *Adolescent online gaming habits in relation to depression, musculoskeletal symptoms and psychosomatic symptoms.*
3. *Gambling frequency and symptoms of ADHD in relation to problem gambling among adolescents.*
4. *Online activities in relation to gambling frequency among adolescents.*

Published article:

Hellström C, Åslund C, Leppert J, Nilsson KW. Influences of motives to play and time spent gaming on the negative consequences of adolescent online computer gaming.
Computers in Human Behavior 2012;28(4):1379-1387

Submitted article 20140702: (With reviewer after re-submit July 2014)

Hellström C. & Åslund C. (2014). *Adolescent online gaming habits in relation to depression, musculoskeletal symptoms and psychosomatic symptoms.*

Article 3 & 4 to be submitted in October/November 2014.

- 3: *Gambling frequency and symptoms of ADHD in relation to problem gambling among adolescents.*
- 4: *Online activities in relation to gambling frequency among adolescents.*

<i>External research grants</i>	
Externally funded doctoral studentship/research time	Other external grants
2011-2015: Svenska spel Research Council, 4 years 100 % PhD studies	

Transition to parenthood; perceived needs of support during pregnancy and parental stress 18 months after childbirth	
D45 – Percentage at CCR-V 50%	2014-12

PhD student	Margareta Widarsson , Reg. Midwife, Med Lic
Department	Dept. of Pediatrics, Västmanland Hospital, Västerås, Västmanland County Council
Supervisor	Ass. Prof. Pranee Lundberg, Dept. of Public Health and Caring Science, Uppsala University, Uppsala
Assistant supervisors	Prof. Tanja Tyden, Dept. of Public Health and Caring Science, Uppsala University, Uppsala Ass. Prof. Gabriella Engström, Christine E. Lynn College of Nursing, Florida Atlantic University, Boca Raton, Florida, USA
Admitted	1 th of March 2011
LIC examination	15 th of May 2013
Doctoral dissertation	Planned 28 th of January 2015
Institution	CCR-V/Dept. of Public Health and Caring Science, Uppsala University, Uppsala
Subject	Medical Science
Research training	<input checked="" type="checkbox"/> Specialist course within field, 2001 <input checked="" type="checkbox"/> Introduction to PhD studies, 2011 <input checked="" type="checkbox"/> Introduction to scientific research, 2011 <input checked="" type="checkbox"/> University Teacher Training Course, spring 2012 <input checked="" type="checkbox"/> Gender analysis in health science research, Why, when and how, 2011 <input checked="" type="checkbox"/> Qualitative content analysis, 2013

Subprojects

1. *Support needs of expectant mothers and fathers – a qualitative study*
2. *Parental stress in early parenthood among mothers and fathers in Sweden*
3. *Parental stress and dyadic consensus in early parenthood among mothers and fathers in Sweden*
4. *Fathers' importance during pregnancy – from expectant mothers' and fathers' perspective*

Published articles

Widarsson M, Kerstis B, Sundquist K, Engström G, Sarkadi A
Support Needs of Expectant Mothers and Fathers: A Qualitative Study
J Perinatal Education, 2012;21(1):36-44
Imp. factor missing

Kerstis B, Engström G, Sundquist K, **Widarsson M**, Rosenblad A
The Association between Perceived Relationship Discord at Childbirth and Parental Postnatal Depressive symptoms: a Comparison of Swedish Mothers and Fathers
Upsala Journal of Medical Science, 2012;117(4):430-438
Imp. factor 1.063

Widarsson M, Engström G, Rosenblad A, Kerstis B, Edlund B, Lundberg P
Parental stress in early parenthood among mothers and fathers in Sweden
Scand J Caring Sci, 2012 Oct 15. doi: 10.1111/j.1471-6712.2012.01088.x. [Epub ahead of print]
Imp. factor 0.892

Widarsson M, Engström G, Berglund A, Tydén T, Lundberg P
Parental stress and dyadic consensus in early parenthood among mothers and fathers in Sweden
Scand J Caring Sci, 2013 doi: 10.1111/scs.12096 [Epub ahead of print]
Imp. factor 0.961

Mothers' and fathers' depressive symptoms postpartum

D44 – percentage at CCR-V 50%

2014-12

PhD student	Birgitta Kerstis , Reg. Ped. Nurse, Med LiC
Department	Resource unit
Supervisor	Ass. Prof. Clara Aarts, Department of Public Health and Caring Science, Uppsala University, Uppsala
Assistant supervisors	Ass. Prof. Gabriella Engström, Christine E. Lynn College of Nursing, Florida Atlantic University, Boca Raton, Florida, USA Ass. Prof. Birgitta Edlund, Department of Public Health and Caring Science, Uppsala University, Uppsala
Admitted	1 th of March 2011
LIC examination	7 th of December 2012
Doctoral dissertation	January 2015
Institution	CCR-V/Dept. of Public Health and Caring Science, Uppsala University, Uppsala
Subject	Medical science
Research training	<input checked="" type="checkbox"/> Specialist course within field, year 1985 <input checked="" type="checkbox"/> Educational foundation course, autumn 2011 <input checked="" type="checkbox"/> Gender analysis in health science research, why, when and how, VT 2011 <input checked="" type="checkbox"/> Introduction course for PhD students, spring 2011 <input checked="" type="checkbox"/> Scientific presentation, year 2011 <input checked="" type="checkbox"/> Introduction to scientific research, spring 2012 <input checked="" type="checkbox"/> Medical epidemiology, year 2013

Subprojects

1. *The association between perceived relationship discord at childbirth and parental postnatal depressive symptoms – A comparison of mothers and fathers in Sweden*
2. *Mothers and Fathers Depressive Symptoms association to Sense of Coherence and perception of their Child Temperament in Early Parenthood*
3. *Depressive symptoms postpartum among parents are associated with marital separation –A Swedish cohort study*
4. *Association between parental depressive symptoms and impaired bonding*

Published articles

Widarsson M, **Kerstis B**, Sundquist K, Engström G, Sarkadi A
Support Needs of Expectant Mothers and Fathers: A Qualitative Study
The Journal of Perinatal Education, 2012;21(1):36-44 doi: 10.1891/1058-1243.21.1.36

Kerstis B, Engström G, Sundquist K, Widarsson M, Rosenblad A
The Association between Perceived Relationship Discord at Childbirth and Parental Postnatal Depressive symptoms: a Comparison of Swedish Mothers and Fathers
Uppsala Journal of Medical Science, 2012;117(4):430-438 doi: 10.3109/03009734.2012.684805.

Widarsson M, Engström G, Rosenblad A, **Kerstis B**, Edlund B, Lundberg P. *Parental stress in early parenthood among mothers and fathers in Sweden.*
Scand J Caring Sci. 2013 Dec;27(4):839-47. doi: 10.1111/j.1471-6712.2012.01088.

Wells MB, Varga G, **Kerstis B**, Sarkadi A.
Swedish child health nurses' views of early father involvement: a qualitative study
Acta Paediatrica, 2013 Jul;102(7):755-61. doi: 10.1111/apa.12246. Epub 2013 Apr 16.

Kerstis B., Edlund, B., Engström, G., Aarts, C. (2013) *Mothers and Fathers Depressive Symptoms Association to Sense of Coherence and Child Temperament in Early Parenthood:*
Scand J Public Health; 41(3):233-9. doi: 10.1177/1403494812472006

Kerstis B, Berglund A, Engström G, Edlund B, Sylvé S, Aarts C. *Depressive symptoms postpartum among parents are associated with marital separation: A Swedish cohort study.*
Scandinavian Journal of Public Health, 2013 May;41(3):233-239

Studies of the mechanisms underlying the additive effect of neoadjuvant castration in ionizing radiation of prostate cancer

D37 – Department of Medical Biochemistry and Biophysics MBB, Karolinska Institute /CCR-V 2014-12

PhD student **Firas Al-Ubaidi, MD**
Department Department of Urology
Supervisor Prof. Thomas Helleday, Department of Medical Biochemistry and Biophysics, Karolinska Institute
Co-authors Torvald Granfors, MD, Dept. of Urology, Västerås
Admitted 2nd of September 2008
Half-time examination 10th of June 2013
Doctoral dissertation 2015
Institution Department of Medical Biochemistry and Biophysics, Karolinska Institute
Subject Basic science in urology
Research training Specialist course within field, year 2010
 Scientific methodology, year 2011
 Ethics, year 2011
 Scientific presentation, year 2011
 Medical statistics, year 2011

Subprojects

Project 1. The impact of castration on hypoxia in prostate cancer
 Project 2. The impact of castration on non-homologous end-joining in prostate cancer
 Project 3. The impact of castration on response to radiotherapy in prostate cancer
 Project 4. Homologous recombination as a target for selective treatment of prostate cancer
 Project 5. Assessment of intra-tumour heterogeneity in prostate cancer

Publications: Al-Ubaidi FL, Schultz N, Loseva O, Egevad L, Granfors T, Helleday T
Castration Therapy Results in Decreased Ku70 Levels in Prostate Cancer.
Clin Cancer Res. 2013 - 19(6);1-10. IF: 7.8

Al-Ubaidi FL, Schultz N, Egevad L, Granfors T, Helleday T.
Castration therapy of prostate cancer: results in downregulation of HIF-1 α levels.
Int J Radiat Oncol Biol Phys. 2012 Mar 1;82(3):1243-1248

New manuscript, project 3. *Castration promotes radiosensitivity by direct regulation of DNA repair in prostate cancer.* **Firas L. Al-Ubaidi**, Niklas Scultz, Hans Hamberg, Katalin Karaszi, Torvald Granfors, professor Thomas Helleday

Planned projects: *Project 4. Homologous recombination as a target for selective treatment of prostate cancer (proved by EPN Dnr 2011/066)*

Received funding during doctoral studies

<i>Västmanland County Council</i>				
Miscellaneous research grants	Doctoral research grants	Doctoral positions 50 %	Internal R&D (FoU) grant	County Council research fund
2012: 6 weeks 2013: 8 weeks	2012: 6 weeks 2013: 8 weeks	From 1 st of April 2013 until 31 st of March 2015		
<i>External research grants</i>				
Externally funded doctoral studentship/research time			Other external grants	

Affiliated Projects

After consultation at the *Open House* as a first step, those colleagues who wish to pursue their research plans can apply for affiliation with the CCR-V in order to receive support with the realization of their project. For this purpose, a special application form including instructions on how to write a project plan is used.

Received applications and attachments are scrutinized by members of an examination committee in order to assess the project's quality and its requirements in terms of time and staff competence. The examination committee comprises a permanent core of a steering committee (including the Head and Assistant Head of the CCR-V and representatives of the Centre's various project groups) and biostatisticians, and is supplemented by affiliated individuals who are chosen for each specific occasion depending on the project's characteristics. The examination board meets twice per term, giving four possible application dates per year.

Projects that require resources extending beyond the Centre's possibilities must provide external funding, e.g. for the recruitment of additional secretaries or assistants. It may also be necessary to affiliate external supervisors to the CCR-V.

If the leader of the affiliated project is postdoctoral, a contact person from the CCR-V will be appointed. If the project leader has not yet completed a dissertation, a research-competent supervisor will be assigned. In addition, the project leader will be allotted a research assistant and a secretary, and be given a work station for data analysis. All documentation (application, project plan, application to the Ethics Committee etc.) is collected in a personal folder that is kept at the CCR-V. The folder will be continuously updated with records of meetings and other documentation regarding the project. Once a year all affiliated projects will be re-evaluated and the project leader may be called upon to report about the project's progress. Once the project is completed and a definitive research report is provided, the project will be removed from the project list and all data stored in the CCR-V's archives.

Those projects that are judged not to have sufficient potential or that show methodological weaknesses may be re-discussed at another *Open House*. The project leader will again meet a researcher/supervisor and a research assistant to discuss possible improvements necessary for affiliation.

The following projects were accepted for affiliation with the CCR-V in 2014:

- 301** *Mapping of the diabetes care organisation in primary care and its importance for enabling patients with diabetes to achieve national treatment goals. Dnr: LTV-373561*
Date of association: 10-01-2014 **Responsible for the project:** Eva Thors Adolfsson, PhD/development strategist, Primary Health Care, Västmanland Hospital Västerås
- 302** *Survival and axillary recurrence in breast cancer patients with sentinel node micrometastasis who do not undergo supplementary axillary clearance – a national cohort study. Dnr: LTV-424341*
Date of association: 20-05-2014 **Responsible for the project:** Yvette Andersson, PhD/MD, Dept. of Surgery, breast unit, Västmanland Hospital Västerås
- 303** *HPV prevalence in primary vaginal cancer and its relation to clinicopathological variables. Dnr: LTV-403861*
Date of association: 20-05-2014 **Responsible for the project:** Cecilia Ranhem, MD, Department of Obstetrics and Gynecology, Västmanland Hospital Västerås
- 304** *Oral apparatus for the treatment of obstructive sleep apnea. A randomized controlled blinded multicenter study comparing the effect of 2 structures. Dnr: LTV-404861*
Date of association: 02-06-2014 **Responsible for the project:** Göran Isacson, Ass.Prof., Västmanland Hospital Västerås
- 305** *Evaluation of the health-related quality of life form CPCHILD regarding children with cerebral palsy aged 4-18 years, in Västmanland and Sörmland. Dnr: LTV-426391.*
Date of association: 04-06-2014 **Responsible for the project:** Katina Pettersson, temp Head of Development, Community Health Care, Centre for Habilitation

- 306** *Avoiding the development of atelectasis during anesthesia by "preoxygenation elimination", short-term ventilation with air and high fresh gas flow. A randomized controlled study. Dnr: LTV-426881*
Date of association: 23-06-2014 **Responsible for the project:** Erland Östberg, MD, Dept. of Surgery, Västmanland Hospital Västerås
- 307** *Diabetic retinopathy and obesity surgery, a retrospective medical record study. Dnr: LTV-423031*
Date of association: 23-06-2014 **Responsible for the project:** Elisabet Granstam, Ass.Prof./MD, Västmanland Hospital Västerås
- 308** *Evaluation of rehabilitation after rotator cuff suture. Dnr: LTV-426521*
Date of association: 23-09-2014 **Responsible for the project:** Katja Berglinn, physiotherapist, Dept. of Orthopaedic Surgery, Västmanland Hospital
- 309** *Simulator instructors' development over time and the significance of instructors' teaching skills in everyday clinical practice. Dnr: LTV-459821*
Date of association: 23-09-2014 **Responsible for the project:** Marie-Louise Södersved Källestedt, PhD /RN, Västmanland County Council, Centre for clinical research
- 310** *Sleep impairment in relation to prognosis following acute myocardial infarction. Dnr: LTV-465711*
Date of association: 23-09-2014 **Responsible for the project:** Emelie Condén, RN/PhD student, Centre for clinical research, Västmanland Hospital Västerås
- 311** *Hand strength, torso and thigh strength and pain in pregnant Somali and Swedish women with vitamin D deficiency. A treatment study. Dnr: LTV-462801*
Date of association: 23-09-2014 **Responsible for the project:** Monica Löfvander, Ass.Prof./MD, Primary Health Care Västmanland, Oxbacken-Skultuna Family Practice
- 312** *Lessons learned from the implementation of the FaR method – physical activity on prescription – for patients in the primary care in the Uppsala-Örebro region. Dnr: LTV-465521*
Date of association: 23-09-2014 **Responsible for the project:** Ann-Christin Johansson, Senior Lecturer, Mälardalen University, Centre for clinical research
- 313** *Incidence of severe visual impairment due to AMD; effect of treatment. Dnr: LTV-426291*
Date of association: 23-09-2014 **Responsible for the project:** Elisabet Granstam, Ass.Prof./MD, Västmanland Hospital Västerås
- 314** *Survival and axillary recurrence after sentinel node-positive breast cancer without supplementary axillary clearance – a randomized study of patients with sentinel node macrometastases. Dnr: LTV-423201*
Date of association: 19-09-2014 **Responsible for the project:** Yvette Andersson, PhD/MD, Dept. of Surgery, breast unit, Västmanland Hospital Västerås
- 315** *Oxygenation test during general anesthesia. Dnr: LTV-426771*
Date of association: 19-09-2014 **Responsible for the project:** Lennart Edmark, MD, Dept. of Surgery, Västmanland Hospital Västerås
- 316** *Five-year follow-up of health professionals' theoretical knowledge and their attitudes to cardiopulmonary resuscitation (CPR). Dnr: LTV-459731*
Date of association: 09-12-2014 **Responsible for the project:** Marie-Louise Södersved Källestedt, PhD/RN, Västmanland County Council, Centre for clinical research
- 317** *Effects on growth of intensified parenteral nutrition for preterm infants. Dnr: LTV-404411*
Date of association: 22-10-2014 **Responsible for the project:** Maria Heyman, Foundation doctor/MD, Dept. of Pediatrics, Västmanland Hospital Västerås

Completed Projects

269

IN FOCUS – Mastering ADHD in adulthood: evaluation of an Internet-based self-help programme.

Date of association: 05-02-2009 **Responsible for the project:** Staffan Söderström, neuropsychologist, Eriksborg Västerås

End date: 04-12-2014

284

Mapping of fall risk factors for elderly people in ordinary housing within Västmanland County Council and the County of Uppsala – a basis for intervention

Date of association: 07-09-2010 **Responsible for the project:** Ann-Christin Johansson, PhD/physiotherapist Västmanland County Council /Mälardalen University, Centre for Clinical Research Västerås

End date: 04-12-2012

Staff Telephone List

Main Office, telephone: +46 21-17 58 67, facsimile: +46 21-17 37 33. Information, telephone: +46 21-17 38 07

Visiting address: Centre for Clinical Research, Entrance 29, Västmanland Hospital, Västerås.

Postal address: 721 89 Västerås. www.ltv.se/ckfvasteras

Mats Enlund, MD, Ass. Prof., Head of Department, 021-17 37 75 mats.enlund@ltv.se	Andreas Rosenblad, biostatistician, PhD, Ass. Prof. 021-17 51 30 andreas.rosenblad@ltv.se
Kent Nilsson, Sociologist, Prof., Deputy Head of Department, 021-17 32 54, kent.nilsson@ltv.se	Marie-Louise Södersved Källestedt, RN, PhD marie-louise.sodersved.kallegstedt@ltv.se
Leif Bergkvist, MD, Prof., 021-17 58 03 leif.bergkvist@ltv.se	Philippe Wagner, biostatistician, 021-17 47 95 philippe.wagner@ltv.se
Maria Dell' Uva Karlsson, personal secretary, 021-17 38 07 maria.delluva.karlsson@ltv.se	Marie-Louise Walker-Engström, biomedical analyst, PhD marie-louise.engstrom@ltv.se
Michaela Eriksson, secretary, 021-17 53 50 michaela.eriksson@ltv.se	Tony Wiklund, RN, research assistant, 021-17 57 30 tony.wiklund@ltv.se
Mariana Ehn, secretary, 021-17 55 18 mariana.ehn@ltv.se	Magnus von Unge, MD, Prof. magnus.von.unge@ltv.se
Maria Pettersson, secretary, 021-17 58 67 maria.a.pettersson@ltv.se	Cecilia Åslund, behavioural scientist, PhD, 021-17 51 52 cecilia.aslund@ltv.se
Ulrika Fagerberg, MD, PhD, 021-17 59 73 ulrika.fagerberg@ltv.se	
Pär Hedberg, MD, Ass. Prof. par.o.hedberg@ltv.se	
Johan Knutsson, MD, PhD johan.knutsson@ltv.se	Post-docs
Annika Kärsund, RN, research assistant, 021-17 37 45 annika.karsund@ltv.se	Yvette Andersson, PhD yvette.andersson@ltv.se
Jerzy Leppert, MD, Prof., 021-17 58 01 jerzy.leppert@ltv.se	Abbas Chabok, PhD abbas.chabok@ltv.se
Monica Löfvander, MD, Ass. Prof. monica.lofvander@ltv.se	Maziar Nikberg, PhD maziar.nikberg@ltv.se
Göran Nilsson, MD, Prof. goran.nilsson@ltv.se	Peter Larm, PhD peter.larm@ltv.se
Eva Nohlert, DMD, PhD, 021-17 34 17 eva.nohlert@ltv.se	Elisabet Rodby-Bousquet, PhD elisabet.rodby.bousquet@ltv.se
Angelica Norling, RN, research assistant, 021-17 37 09 angelica.norling@ltv.se	Fredrik Söderqvist, PhD fredrik.soderqvist@ltv.se
Marja-Leena Ojutkangas, RN, research assistant, 021-17 37 45 marja-leena.ojutkangas@ltv.se	
Mattias Rehn, system administrator, 021-17 33 76 mattias.rehn@ltv.se	